

Service manual

Exchange of Factory Pre-Calibrated Sensor Module



Model: AP-338

Version:

The tester can remain accurate for 1 year of use. The more frequent the use, the more the unit will need to be calibrated. According to DIN31051, we recommend recalibration every 12 months (or earlier) basis to ensure maximum accuracy. **OR exchange the factory pre-calibrated sensor module every 12months (or earlier)**

Following is the setp by step for exchange the Factory Pre-Calibrated Sensor Module.

1. Turn Off the device, by press the power key for 3 seconds.



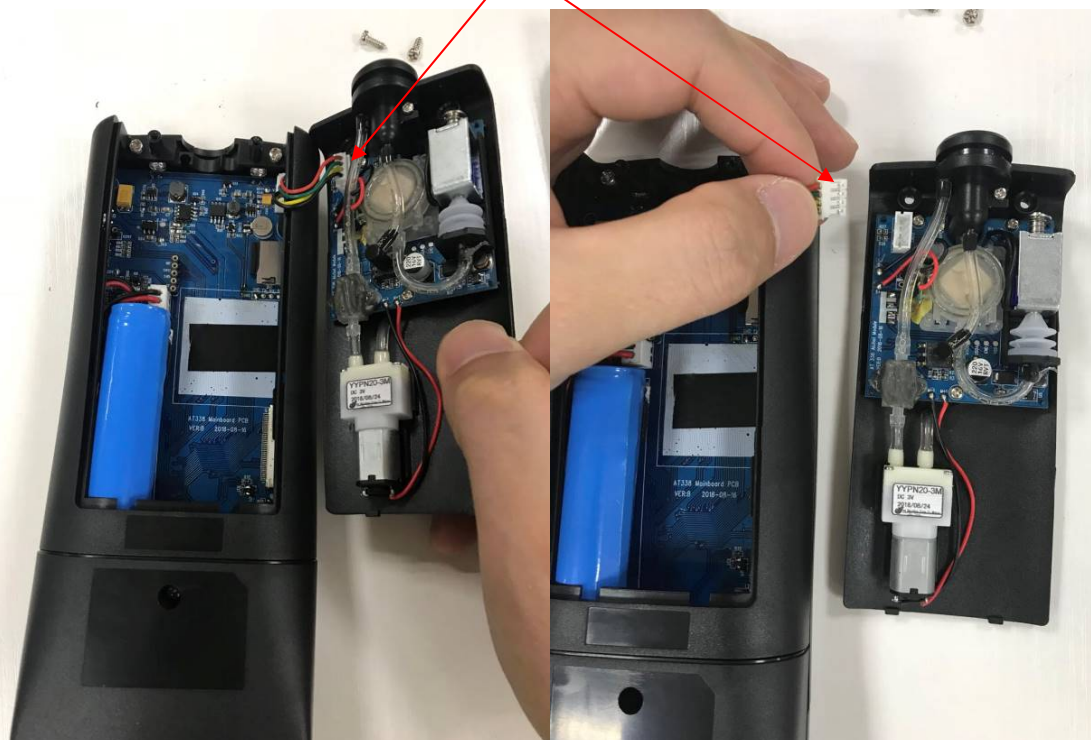
2. Remove 2pcs screw on sensor cover.



3. Take out old sensor module form the device.



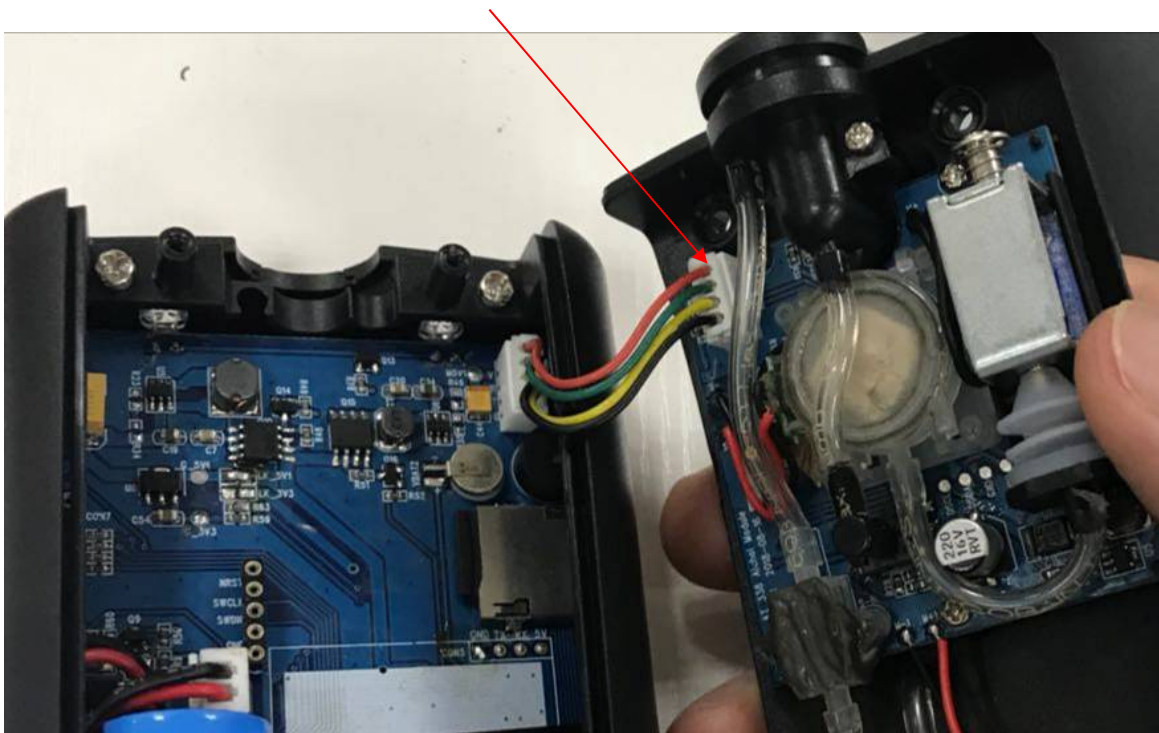
4. Unplug the communication cable from old sensor module



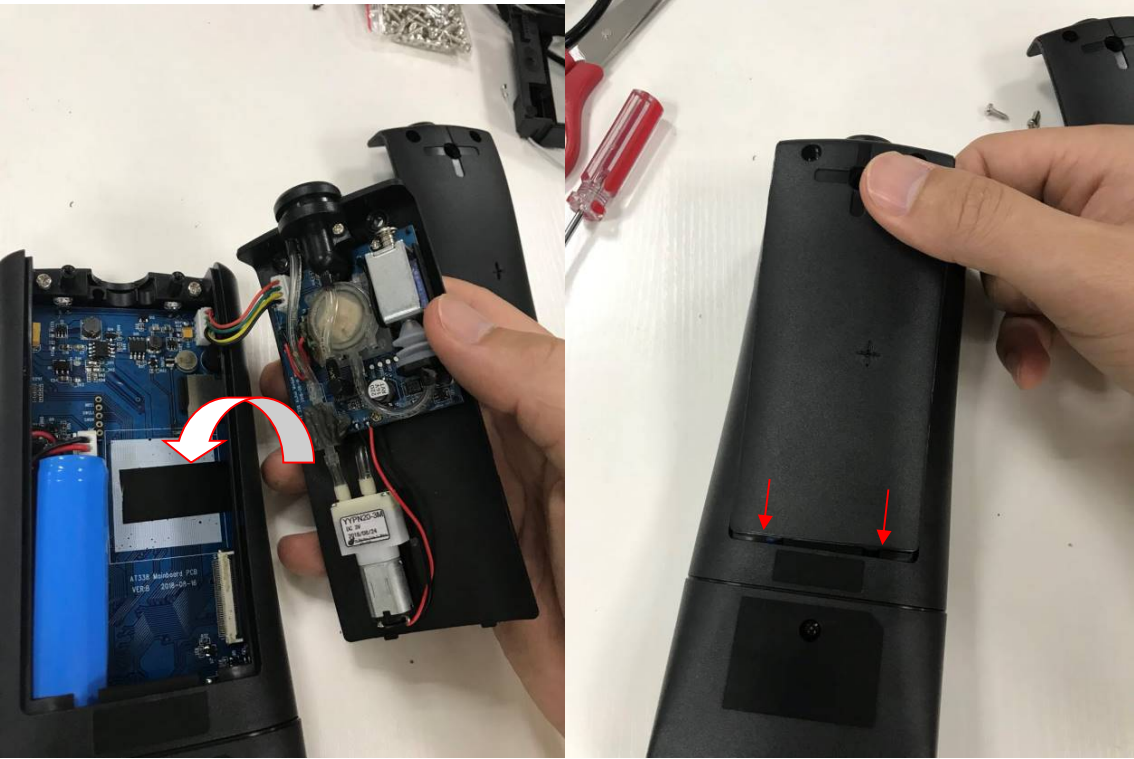
5. Plug the new Factory Pre-Calibrated Sensor Module to device



****Please make sure it is plugged well, and fixed.**



6. Install the sensor module to Main device housing.



7. Install 2 screws and finish the exchange

