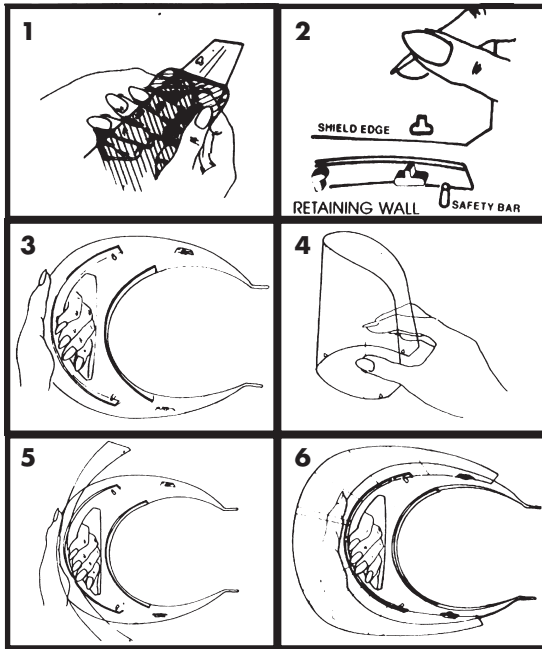


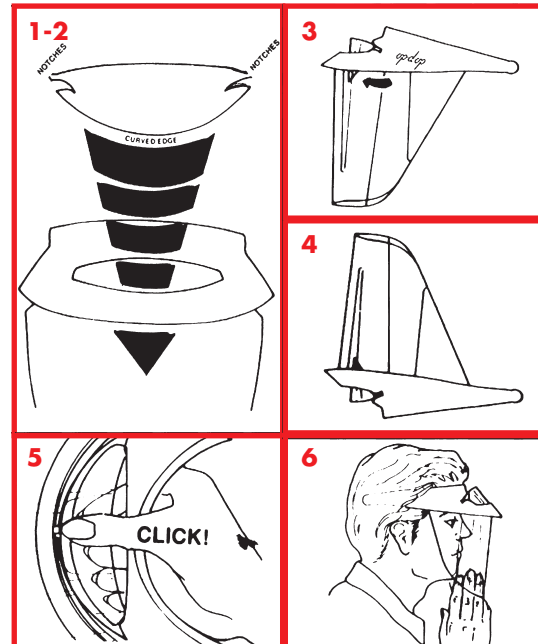


# MOUNTING SHIELD



1. Peel the shield. There is a protective film on both sides of the shield.
2. Note key visor and shield part names and location.  
 "P" symbol  
 "OP" symbol
3. With left hand hold visor upside down as shown. Make sure your finger can press on the retaining wall's middle "P" symbol or key.
4. With right hand hold shield as shown.
5. Press shield onto the retaining wall's middle "P" symbol and press your left hand's index finger onto the "P" after the shield is mounted as illustrated. This locks the shield onto the visor while your right hand finishes mounting the shield.
6. While maintaining pressure on the "P" with your left index finger, concentrate on pushing the edge of the shield over the top of the safety bar and between the retaining wall, then press shield (Centrally or medially) towards the "P" symbol and the holes in the shield will automatically align with the "OP" symbols.



# INSTALLING THE MINI-SHIELD

1. This is the Mini-Shield.  
 Its function is to block any chance of splatter from entering the ventilation window while still maintaining ventilation. It acts as an "overlapping barrier."  
**THE MINI-SHIELD CAN ONLY BE PUT ON AFTER THE FULL FACE SHIELD IS MOUNTED TO THE VISOR.**
2. The Mini-Shield approaches the visor from the top. Press the Mini-Shield down until the Mini-Shield's notches engage the edges of the visor's window.
3. This is how the shields will look from the side, at this point.
4. Turn the visor and shields upside down to complete the Mini-Shield installation.
5. Pull the Mini-Shield with your fingertips as you press down on the bottom of the Mini-Shield with your thumb. Press it under the "P" symbol. It will "click" when it locks into position.
6. Put the Op-d-op visor on almost like a pair of glasses. It fits a little higher on your head than glasses. Make sure the shield is parallel to your face: with about 2 to 3 fingers width between your chin and the shield.

---

## CAUTION ON USING THE PRODUCT

The visor was not treated with anti-fogging agents, in fact their application could decrease the optical quality and cause eye irritations. Therefore it is necessary to strictly follow the step number six in order to avoid the fogging of visor and guarantee a suitable degree of protection.

---

## ARE THE SHIELDS TOO BIG?

If the face shield touches your shoulder or chest while using your Op-d-op visor shield, you can shorten it with sharp scissors.

---

## CLEANING THE SHIELDS

If the shield is heavily splattered, it is best to properly dispose of the infected shield and use a new one. If shields are to be reused, wash them under running water with a germicidal soap or disinfectant and rinse clean. Blot shields dry with Kleenex or soft cloth towel. **DO NOT RUB SHIELDS WITH PAPER TOWELS.** This will scratch the shield. Keep shield assembly right side up while cleaning. Shields cannot be autoclaved. Shields can be totally immersed in cold sterilized solutions according to the manufacturer's instructions. Rinse clean and blot dry after use.

---

## WARNING:

This product does not prevent the contraction of any disease or infection. It merely reduce the risk of splashing body fluids into the eyes, nose, or mouth of the user. These products should be properly disinfected or discarded after use.

---

## ATTENTION:

The Op-d-op visor shield is a clinical device only. Do not use it outside the office or laboratory for any purpose whatsoever.



---

## THE VISOR SHIELD

To move in close with  
confidence



Distribuito da:



GIMA S.p.A. - Via Marconi, 1 - 20060 Gessate (MI) - Italia  
Tel. 199 400 401 - Fax: 199 400 403  
[www.gimaitaly.com](http://www.gimaitaly.com)