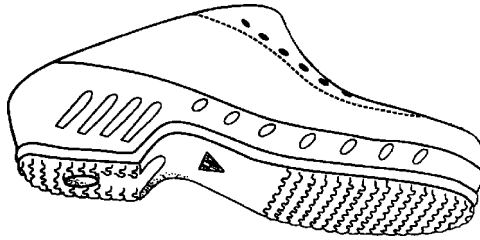




GIMA

ZOCCOLO PROFESSIONALE PROFESSIONAL CLOG



**MANUALE D'USO E MANUTENZIONE
USE AND MAINTENANCE BOOK
INSTRUCTIONS DE FONCTIONNEMENT ET ENTRETIEN
BETRIEBS UND WARTUNGSANWEISUNGEN
MANUAL DE USO Y MANTENIMIENTO
MANUAL DE USO E MANUTENÇÃO
ΕΓΧΕΙΡΙΔΙΟ ΧΡΗΣΗΣ ΚΑΙ ΣΥΝΤΗΡΗΣΗΣ
دليل الإستعمال والرعاية**

ATTENZIONE: Gli operatori devono leggere e capire completamente questo manuale prima di utilizzare il prodotto.

ATTENTION: The operators must carefully read and completely understand the present manual before using the product.

AVIS: Les opérateurs doivent lire et bien comprendre ce manuel avant d'utiliser le produit.

ACHTUNG: Die Bediener müssen vorher dieses Handbuch gelesen und verstanden haben, bevor sie das Produkt benutzen.

ATENCIÓN: Los operadores tienen que leer y entender completamente este manual antes de utilizar el producto.

ATENÇÃO: Os operadores devem ler e entender completamente este manual antes de usar o produto.

ΠΡΟΣΟΧΗ: Οι χειριστές αυτού του προϊόντος πρέπει να διαβάσουν και να καταλάβουν πλήρως τις οδηγίες του εγχειριδίου πριν από την χρήση του.

الحذر: على العمال قراءة وفهم هذا الدليل بكامله قبل البدء باستخدام المنتج.

CE

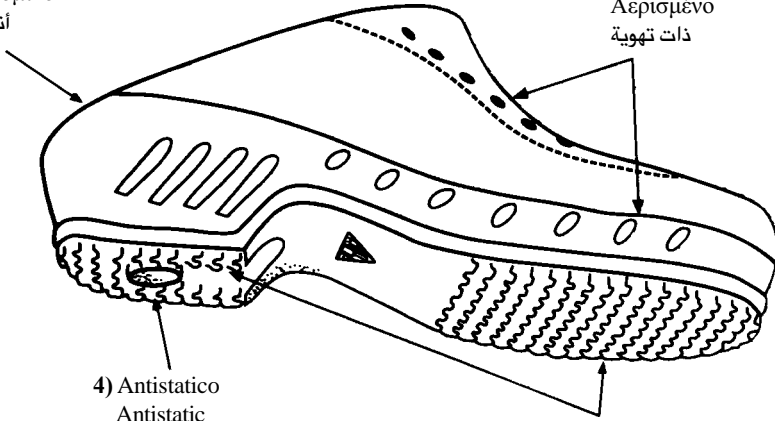




2) Anatomico
Anatomical
Anatomique
Anatomisch
Anatómico
Anatômico
Ανατομικό
أنتومي

5) Sterilizzabile 135°C
Sterilizable 135°C
Autoclavable à 135°C
Sterilisierbar 135°C
Esterilizable 135°C
Esterilizável 135°C
Αποστειρωτικό 135°C
قابل للتعقيم بدرجة حرارة ١٣٥

6) Areato
Aerated
Aéré
Belüftet
Aireado
Arejado
Αερισμένο
ذات تهوية



4) Antistatico
Antistatic
Antistatique
Antistatisch
Antiestático
Antiestático
Αντιστατικό
مقاوم للإستاتيكية

3) Antiscivolo
No-Slip
Antidérapant
Rutschfest
Antideslizante
Anti-escorregamento
Αντιολισθητικό
مضاد للإنزلاق



CONSERVATION AND MAINTENANCE INSTRUCTIONS



Verify the sole's integrity before putting on the footwear. It is strongly recommended to wash the soles with water and a soft bristle brush and dry them well before wearing the shoes for the first time. Clean the shoes only with water and soft bristle brushes. Never use alcohol, mineral oil derivatives such as petrol, diluents, petroleum nor any chemical agents. These substances may damage the composition materials causing not immediately visible weakenings and impairing the original protective characteristics. Keep footwear dry and clean in a suitable place at room temperature. Never put wet shoes in contact with a heat source after usage but always let them dry in a well-ventilated place at room temperature.

With the cooperation of a team made by model-makers, mould-makers and experts we developed the **hi-tech clog** with the following peculiar features:

- 1) **Unisex** man, woman, child
- 2) **Anatomical** for a perfect foot support
- 3) **No-Slip** thanks to the sole-heel design
- 4) **Antistatic** to discharge body electricity
- 5) **Sterilizable** in autoclave up to **135 degrees C.**
- 6) **Aerated** with upper-sole holes.

These peculiar features, together with the perfect fitting, lightness and use-resistance earned the **European CE** ratification with the highest marks.

Many thanks for the preference granted.