

# SOEHNLE

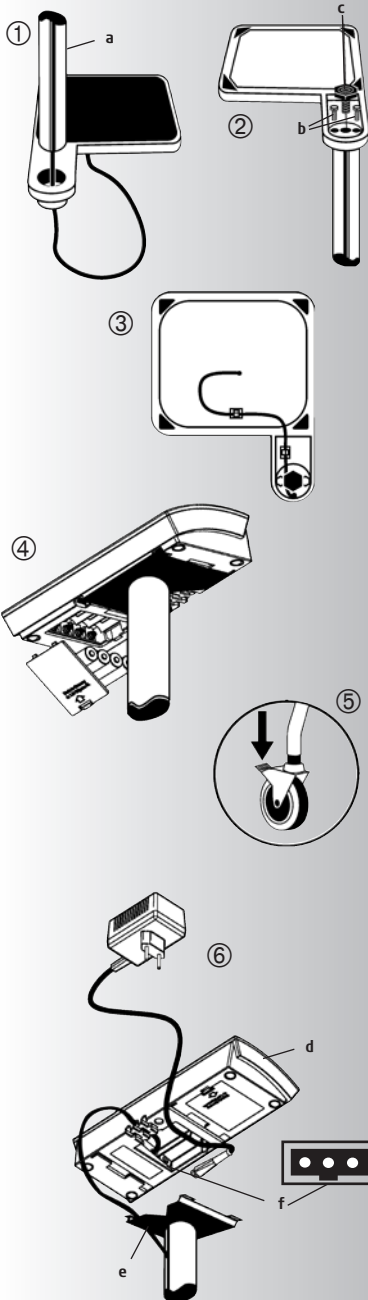
## PROFESSIONAL



Bedienungsanleitung	2
Operating Instructions	5
Mode d'emploi	8
Gebruiksaanwijzing	11
Instrucciones de manejo	14
Istruzioni d'uso	17
Início de funcionamento	20
Návod k obsluze	23
Käyttöohje	26
Bruksanvisning (S)	29
Bruksanvisning (N)	32
Brugsanvisning	35
Οδηγίες χρήσης	38
Instrukcja obs ugi	41
Kullanma Kılavuzu	44

7800 • 7801 • 7802 • 7805

Installation instructions for 7800



1. Insert stand tube (a) in platform socket.  
Make sure you do not pinch the cable.
2. Turn scale over and first insert the two fixing screws (b) and tighten.  
Then insert levelling foot (c).
3. Fix cable to scale base using cable ties.

Getting started 7800, 7801, 7802, 7805

4. Insert batteries (4 x 1.5V AA) or connect the unit to a power supply.  
Position the scale at its place of use. Make sure it is horizontal.  
(On 7800 use levelling foot as aid).
5. On wheelchair scale 7802, block the rear wheels.  
The scale is ready for operation.

Plug-in power supply unit

6. The socket (f) for connecting the supplied plug-in power supply unit is located on the base of the display unit (d). Push display unit to the rear and remove. Insert the cable and run it into the cable grip. Then push display unit back onto display unit holder (e).  
The power supply unit is not waterproof and therefore must not come into contact with water.

Should the power supply unit become wet or show visible signs of damage, do not operate the scale with the power supply unit. Please contact your dealer or service partner.

Power supply

You can also operate the scale using Soehnle Professional rechargeable batteries besides the plug-in power supply unit and zinc/carbon or alkali/manganese batteries (4 x 1.5V AA).

Please note that the batteries are not charged when the power supply unit is switched on. You require a separate battery recharging unit.

Recharging kit (optional)

You can obtain Soehnle Professional rechargeable batteries as part of a separate kit, consisting of a recharging unit, Soehnle Professional rechargeable batteries and a safety sticker.

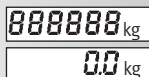
When inserted, Soehnle Professional rechargeable batteries have sufficient charge for up to 200 hours of weighing (depending on the recharging level of the batteries). During recharging (approx. 15 hrs), an indicator lamp is lit on the recharging unit. Start a new loading cycle by removing and then inserting the flat plug on the display unit. If you do not use the rechargeable batteries for a long time, they will lose some of their capacity. The batteries are fully charged after approx. 3 to 5 recharging cycles.

Replacement parts: Soehnle Professional rechargeable batteries, recharging unit

When you insert rechargeable batteries into the unit, attach the supplied sticker to the battery compartment.

1. The sticker reads as follows: Caution! Rechargeable Soehnle Professional batteries in use, do not replace with other batteries.  
**Caution:** if you use normal batteries with the battery recharging unit, there is a danger of leakage and explosion. If you start using normal batteries again, replace the battery recharging unit with the plug-in power supply unit supplied with the scale.
2. The power supply unit is a battery recharging unit and can be recognised by the LED on the housing.

## Weighing



Switch the scale on.  
The test display "888888" appears. Then "o" appears.  
Scale is ready for weighing.

## Taring




Towels and seat cushions can be placed on scale for tare weighing. After placing articles on scale, press  button. Reading "o" appears. Scale is ready for weighing.


After the first tare weighing, an "N" (net) appears in the display for information purposes. "N" is only cleared when you switch the scale off.

## Switching off

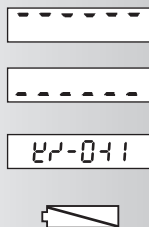


When the display shows "o", press the  key. When operating the scale with batteries or rechargeable batteries, the auto-off function is active. When the display shows "o", the scale switches off automatically after 2 minutes.

## Changing units

This is possible at any time. Press the  key to change units. The last unit used remains active when you switch the scale off and appears again the next time you switch the unit on.

## Fault messages



Overload: please observe the weight range of the scale (see name-plate).

Underload: switch the scale on again. If this does not solve the problem, contact your dealer or service partner.

With an unclear display (see example on left): switch off the power supply to the scale for 10 seconds by removing the (rechargeable) batteries and/ or pulling out the power plug.

(Rechargeable) batteries empty. Please replace or charge them (4 x 1.5V AA).

Please make sure that you do not try to charge the rechargeable batteries with the power supply unit plugged in. You require a separate recharging unit. This is available as an accessory.

## Technical data



Refer to the information on the display unit for weight range and numeric intervals.

The power supply data is given on the plug-in power supply unit.

Working temperature: 5 - 35°C  
Storage temperature: -10 - 55°C



Dispose of used (rechargeable) batteries in accordance with the national and local regulations for environmental protection and recycling.

## Cleaning

It is sufficient to clean the scale using a damp cloth and a normal cleaning agent. Do not use any scourers.

## Maintenance

The scale does not require any routine maintenance. However, we recommend to check the scale's accuracy at regular intervals. The regularity of these checks is dependent on the level of use and the state of the scale. If any inaccuracies occur, please contact your dealer or the Soehnle Professional Service Department.

## Note

The display value may be influenced by extreme electrostatic and electro-magnetic interference, e.g. operation of a radio unit or a mobile phone in close vicinity to the unit. When the electrostatic interference is no longer present, the unit can again be used for its intended purpose. You may need to switch it on again.

In addition, air currents, vibrations, rapid changes in temperature and direct sunlight may have an effect on the accuracy of the scale.

The scale is protected to IP 54 protection class. Therefore, avoid high levels of humidity, vapours, liquids and strong contamination. These influences may damage the measuring components and render your warranty claim null and void.

Interference suppression of the unit corresponds to the valid EU directive 89/336/EWG.

## Warranty - Liability

If a fault or defect is present on receipt of the unit which is within Soehnle Professional's scope of responsibility, Soehnle Professional shall be obliged to repair the fault or supply a replacement unit. Replaced parts shall be the property of Soehnle Professional. Should the fault repairs or replacement delivery not be successful, the statutory provisions shall be valid. The period of warranty shall be 2 years, beginning on the day of purchase. Please retain your receipt as a proof of purchase. Should your scale require servicing, please contact your dealer or Soehnle Professional Customer Services.

### **No responsibility shall be accepted for damage caused through any of the following reasons:**

Unsuitable or improper storage or use, incorrect installation or commissioning by the owner or third parties, natural wear, changes or modifications, incorrect or negligent handling, overuse, chemical, electrochemical or electrical interference or humidity, unless they can be traced back to Soehnle Professional.

If operating, climatic or any other influences lead to a major change in conditions or material quality, the warranty for perfect unit functioning shall be rendered null and void. If Soehnle Professional provides an individual warranty, this means that the unit supplied will be free of faults for the length of the warranty period.



**SOEHNLE**

**PROFESSIONAL**

**Soehnle Professional GmbH & Co. KG**

Manfred-von-Ardenne-Allee 12

DE-71522 Backnang

Telefon +49 (0) 71 91 / 34 53-0

Telefax +49 (0) 71 91 / 34 53-211

[info@Soehnle Professional.com](mailto:info@Soehnle Professional.com)

[www.Soehnle Professional.com](http://www.Soehnle Professional.com)