



GIMA

PROFESSIONAL MEDICAL PRODUCTS

***DEAMBULATORE CON RUOTE
ROLLATOR WITH WHEELS
DÉAMBULATEUR À ROUES
ROLLATOR MED HJUL***

All serious accidents concerning the medical device supplied by us must be reported to the manufacturer and competent authority of the member state where your registered office is located.

INTRODUCTION

This manual provides the instructions for a correct use of our patient aid or an assistant / carer.

INTENDED USE

The rollator is designed to be used inside buildings by patients with an impairment to legs.

The devices are intended to provide a support to the body. This aid allow patient mobility making it easy to walk. They must be used with two arms in order to guarantee safe operation.

WARNING! The rollator is built for indoor use and only on flat surfaces. If it is necessary to employ the devices outside we advise to follow the road rules like any pedestrian.

Before each use make sure that:

- The walker has been adjusted to the correct height.
- The tips are in good condition. Should they be worn or missing, replace them immediately.
- Make sure that the legs of the walker have been adjusted to the same height.

MAINTENANCE

The rollator do not require special care for their ordinary maintenance. We advise to regularly perform the following checks:

- verify the reliability of different components
- check the correct fixing of screws and nuts
- test moving parts, apply lubricant if needed
- clean parts with mild detergents (do not use corrosive or harmful chemicals), put it in dry and ventilated environment.

WARNING!

Do not use the equipment in case it is damaged or any component is missing. Do not use the patient aids for purposes not mentioned in this user manual. Do not cross obstacles or use the patient aids on uneven surfaces, or wet and slippery. The use of the device is not recommended for people with poor functionality in the hands and arms.

Only use original accessories and spare parts. The use of non-original accessories or spare parts could cause the risk of falls and injuries. Do not use on stairs. The use of walkers in water (showers, bathtubs, swimming pools, etc.) can favour the oxidation of the operating mechanisms, causing damage to the walker and/or injury to the user

Max load 100kg

ASSEMBLY

Kit supplied



fig. 1

Release the lateral supports from the wheels (fig.1) and slide the part of the structure with the rods until the device is in the position shown in fig. 2.



fig. 2

For convenience, during assembly, place the walker on the ground, as shown in fig. 2.

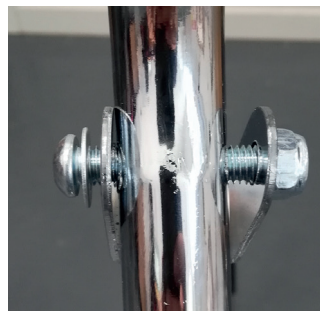


fig 3

Take the screw, the washer and the bolt and secure them as shown in fig. 3. It is recommended to tighten them well using the Allen wrenches supplied.



fig 4

Once both screws are in place, the walker can be turned as shown in fig. 4. Adjust the height of the knobs by sliding the tubes.



fig. 5

Open the two locking screws, as shown in fig. 5.



fig. 6

Place the two locking screws in the stoppers as shown in fig. 6 and tighten them as much as possible. Always check the stability of the device before using it.

GIMA WARRANTY TERMS

The Gima 12-month standard B2B warranty applies.

	Manufacturer		Keep in a cool, dry place	LOT	Lot number
	Consult instructions for use		Keep away from sunlight	MD	Medical Device
REF	Product code	CE	Medical Device compliant with Regulation (EU) 2017/745		Caution: read instructions (warnings) carefully
	Date of manufacture	EC REP	Authorized representative in the European community	UDI	Unique Identifier



Foshan Dongfang Medical Equipment Manufactory (LTD.)
5 Xingfu Road, Zone A, Shishan Industrial Park,
Nanhai District, Foshan City, China, 528000
Made in China



MedNet EC-Rep GmbH
Borkstrasse 10. 48163 Muenster. Germany



FS962

Importato da / Imported by / Importé par / Importerad av:
Gima S.p.A. Via Marconi, 1 - 20060 Gessate (MI) Italy
gima@gimaitaly.com - export@gimaitaly.com
www.gimaitaly.com

GIMA 27721

