

(GB)

SEMRIGID CANNULA

Semirigid cannula "Karman Type" for endouterin suction and for voluntary abortion.

The device can only be used by specialized medical staff

Disposable device: any reuse could cause the risk of cross-contaminations and/or failed sterility or cleaning.

• Do not expose to heat; • Remove the device from the package just before use; • Before use visually inspect the device to make sure it is intact

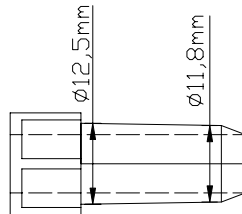
Expected use: The semirigid cannula is used to for endometrial suction and for voluntary abortions.

Indications: It is recommended for endometrial suction and for voluntary abortions.

Use: after having anesthetized the patient: dilate the cervical canal; chose a cannula of the most suitable diameter for the case at hand; remove the cannula from the package; curve the cannula to adapt it to the uterine anatomy; fix the cannula to the handpiece; introduce the cannula into the uterine cavity; start suction procedures

REF	Ø	Color of the joint
CAN06 S01	6 mm	gray
CAN07 S01	7 mm	yellow
CAN08 S01	8 mm	orange
CAN09 S01	9 mm	red
CAN10 S01	10 mm	green
CAN11 S01	11 mm	light blue
CAN12 S01	12 mm	blue

Features which the handpiece of the suction pump should have to achieve a safe combination between the joint of the cannula and the handpiece of the suction pump:





Biogyn s.n.c.

Via A. Volta, 14 41037
Mirandola (MO) - Italy



Distributore:

GIMA S.P.A.

Via Marconi, 1

I-20060 Gessate (MI) – Italy

www.gimaitaly.com

