



Wireless Probe Type Ultrasound Scanner

Quick Operation Guide

Model: CProbe-CL/L; UProbe-C/L

Contents

Quick Operation Guide.....	English 1
Guida rapida all'uso	Deutsch 21
Kurzanleitung.....	Italiano 42
Guía de funcionamiento rápido.....	Español 64
Guide d'utilisation rapide.....	Français 85

Scan the QR code for User Manual EN/IT/DE/ES/FR





Wireless Probe Type Ultrasound Scanner

Quick Operation Guide

Model: CProbe-CL/L; UProbe-C/L

Getting Started

Download App

Search and download 'WirelessUSG' from the App Store on iPhone/iPad or from Google Play on Android devices.

Wifi Connection

1. Press the button to power on your probe;
2. Enable your phone's WiFi; among your WLAN list, select the Wifi ID with the same last several characters/numbers as the SN on the back of the probe.
3. Enter the connection password, which is the serial number (SN) in lowercase letters found on the back of the probe. For instance, if the SN is WXPCAKK020, use 'wxpcakk020' as the password.

Then you can run the App



SUNGO Europe B.V.

Fascinatio Boulevard 522, Unit 1.7,

2909VA Capelle aan den IJssel, The Netherlands

www.viatomcare.com

CAUTION

- ✧ Read this guide carefully before operating the device, be familiar with the equipment and operation procedures, and strictly implement; the company is not responsible for the damage caused by the improper use of the machine and the resulting potential adverse consequences;
- ✧ This document serves as a quick reference guide for operation. For comprehensive information on the device, please consult your authorized dealer to obtain the full User's Manual.
- ✧ The device must be operated in a clean environment, avoiding exposure to direct sunlight, extreme temperature fluctuations, dust, near heat sources, high humidity places, do not place objects on top of the instrument.
- ✧ The device must be operated in undisturbed conditions so as to prevent data transmission interruptions.
- ✧ Prescription Use Only. The device is intended for operation by qualified medical physicians.
- ✧ The device should only be repaired by professionals authorized by the manufacturer.
- ✧ The device is not subject to an expiration date. Its expected service life is 10 years. Beyond this period, even if the device still works normally, it is strongly recommended an inspection by the manufacturer.

- ✧ Discarded components shall be disposed in accordance with local regulations.
- ✧ Handle the device with care to prevent it from falling
- ✧ Please note: The message 'Insufficient Storage Space' will be displayed on the interface to prompt users to free up space when storage is low.






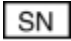
WARNING




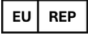





- ✧ The device is not rated as explosion-proof. Do not use it in environments that are potentially flammable or explosive, including areas where anesthetic gases, oxygen, hydrogen, or other hazardous substances may be present.
- ✧ The instrument is not waterproof, do not spill water or other liquids on the surface of this instrument.
- ✧ Prescription Statement "Caution: According to related government law restricts, this device is only used by physician!"
- ✧ Maintain vigilance ultrasonic output safety, adhere to ALARA principle (As Low as Reasonably Achievable), apply the lowest feasible emission power to obtain satisfactory examination outcomes. Excessive unnecessary ultrasonic output could potentially increase the risk of biological effects increase risk of biological effects. It is imperative to always prioritize the safety of your patients and take full responsibility for it.



1. Standard Configuration

	CProbe-CL /Uprobe-C	CProbe-L /Uprobe-L
Wireless Probe Main Unit 1 pcs	√	√
Wireless Charger 1 pcs	√	×
USB Charge Cable 1 pcs	√	√
Cellphone/Tablet Cupport 1 pcs	√	√
Quick Operation Guidance Copy 1pc	√	√

2. Symbols and Meanings

Symbol	Explanation
	Type BF applied part
	Refer to the operation manual
	Waste electrical and electronic equipment alone processing signs (should be disposed in accordance with local regulations.)
	Power ON/OFF
Freeze	Freeze image
	Keep Dry
	Serial number

Symbol	Explanation
IPX1/IPX7	Liquid protection degree
	Date of manufacture
	Manufacturer
	Indicates that the product complies with the EU Medical Device Regulations(Regulation (EU) 2017/745)
	Authorized representative in the European community
	Prescription use
	Certificated by Federal Communications Commission
FCC ID	ID given by FCC after pass the FCC certification 2AKFH-CPROBE
	Non-ionizing electromagnetic radiation
	MR unsafe
	Indicates that caution is necessary when operating the device or control close to where the symbol is placed, or that the current situation needs operator awareness

Symbol	Explanation
	or operator action in order to avoid undesirable consequences.
	Medical device
	Unique device identifier

3. Install software APP

Scan the QR code below, or visit iOS app store for iPad/iPhone, or Google Play for Android tablet/phone, search "WirelessUSG", to download and install the app .



iPhone/iPad APP



Android APP



Windows APP

APP Platform Requirements:

- ✧ iOS 9.0 or above iPhone/iPAD /iPod touch (Strongly recommended)
- ✧ Android 10 or above cellphone/Tablet
- ✧ Windows PC: Window 7 /Window 10, CPU G45603.3G or above, 4G memory or above, WIFI module should support dual mode

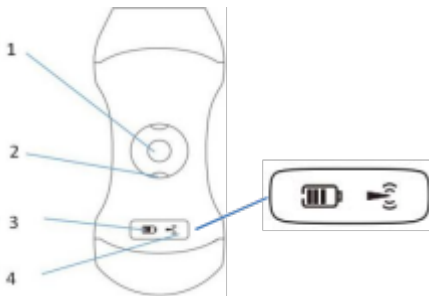
Note:

- ✧ If you purchase high version probe (dual-head version) and use iPad to connect with device, please use iPad air 2 or above configuration, otherwise it may flashback or run slowly.
- ✧ Recommended Android devices: such as cellphone: Google Pixel 3aXL; tablet: Galaxy TabS4. Recommended Android

cellphone/tablet brand: Google/LG/SAMSUNG, other non-mainstream or new models of Android phones/tablets may not be supported.

4. Getting Started

4.1 Button/indicator introduction



1. Button for Power On/Off & LIVE/FREEZE

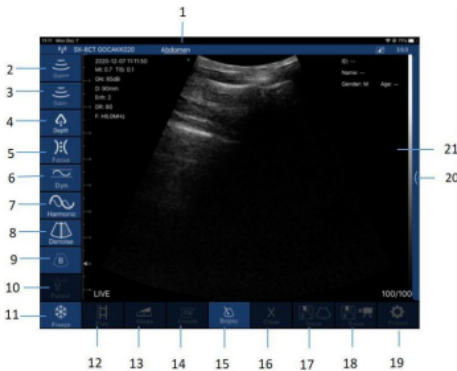
- ✧ Power on/off: press the button to power on, long press the button about 6 seconds to power off.
- ✧ Freeze/Unfreeze: short press the button. The word "FREEZE" will appear on the app interface, press again the button will unfreeze, you can also Freeze/Unfreeze images through app.
- ✧ Press and hold the button for approximately 3 seconds to switch between the linear array and convex array probes, and vice versa.

2. Working Probe Indicator:show the present working probe
3. Battery Capacity Indicator:indicate the battery capacity.
- 4.Wireless Connection Indicator:a flickering indicator light signifies that the device is prepared for WiFi connection.

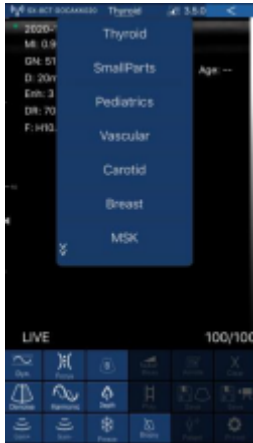
4.2 Wireless Connection

Press the button to activate your probe. For the initial connection with your intelligent terminal device, you must enter the WiFi password. Enable WiFi on your phone or tablet and select a network with an ID such as 'SS-1 GMBFCA001' from the list of available WLANs. The last few digits of the WiFi ID correspond to the last few digits of the SN (Serial Number), which is located on the back of the probe. Enter the SN in lowercase as the WiFi password. Once the connection is successfully established, launch the app.

5. APP Interface





UI of Tablet and Window APP



UI of Cellphone APP

- 1.Body parts: press this icon to switch to different body parts
- 2.Gain +: increase the gain (image)
- 3.Gain -: reduce the gain (image)
- 4.Depth: adjust the depth of image
- 5.Focus: adjust the focus of image
- 6.Dyn: adjust the dynamic range of the image
- 7.Harmonic: harmonic imaging and adjust work frequency
- 8.Denoise: used to eliminate low-level echo caused by noise
- 9.Imaging modes: adjust mode to B/BM/Color/PDI/PW mode
- 10.Patient: patient information management
- 11 Freeze/live: image freeze and unfreeze

- 12.Play: playback movie when image is frozen
- 13.Meas: distance/area/obstetric measurement
- 14.Annotate: add comment on the image
- 15.Biopsy: draw the puncture line for puncture guidance
- 16.Clear: clear the measured results and comments on the image
- 17.Save Image: save as a single image
- 18.Save Video: save as a video
- 19.Preset: WiFi channel selection in order to avoid congestion
- 20.TGC Function Menu: click the  icon on the right (Tablet UI), if you are using a phone, the icon  is on the top right.
- 21.Image Depth Gauge: adjust the depth of the image by moving your finger up and down on the image.

Note: Above functions 12~14, 16~19 are only available under Freeze status.

Color Doppler Imaging Mode (Color, PDI)

- 1)Gain +: increase color blood flow gain.
- 2)Gain -: reduce color flow gain.
- 3)PRF: adjust pulse repetition frequency.

WF: Wall Filter is adjustable, use Wall Filter to remove low-frequency and high-density noise signals. Increasing the wall filter will filter out the tissue image moving at a low speed, while decreasing the wall filter will show more tissue moving.

4)Move/Size: adjust the position and size of the color sampling frame by clicking and moving with your finger.

Note: PRF and WF function are only applied for probe supporting color doppler mode.

Pulse-wave Doppler Imaging Mode (PW)

1)Gain +: increase pulse gain.

2)Gain -: reduce pulse gain.

3)Volume: the equal line that can zoom in and out to check the volume of the test area.

4)Angle: to change the angle of the spectrum sampling line in real-time scanning state.

5)PRF: adjust pulse repetition frequency.

6)Baseline: adjust the baseline location

Measuring Function

When measuring, if you need to fine-tune the location of the measuring point, tap the measuring point to until it turns to green.

The right button will appear on the lower right corner.

Click the arrow to adjust and confirm by pressing the middle square button.

After measuring, if you want to delete all the measured results, press the “Clear” icon below the image area. If you want to delete a certain measurement, click on the “x” icon to the right of the

result.



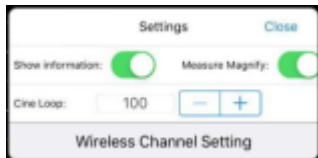
Puncturing Function

In the LIVE state, tap the biopsy icon to access the puncturing function, which offers two types of in-plane and out-of-plane puncturing. For in-plane puncturing, adjust the angle by the arrow button in the lower right corner of the image. For out-of-plane puncturing, this function enables the adjustment of the depth and size of the blood vessel. It also automatically displays the blood vessel depth and radius in the lower right corner of the image.

6. Preset

In a congested WiFi environment, you may opt to switch the probe to an alternative WiFi channel. Press the "Preset" icon to bring up

then the signal channel selection list, click to select your desired channel. After two seconds, please restart the probe and connect with the intelligent terminal again.



Cine Loop: There are different video time lengths for you to choose when saving a video. For example, No.100 means a 10-second video, No.200 means a 20-second video.

The system incorporates the DICOM function for image transmission. Android users can access the received images through the following directory: file management - internal storage device - WirelessUSG.

For iOS users, the client's file storage location is accessed by connecting the device to a computer with a USB cable and downloading the iTunes software. Open iTunes and connect the device - file sharing - wireless ultrasound - wireless ultrasound documentation. Show information: data such as Time, Depth, Denoise, Gain in the upper left corner, can be hidden and display.

7. Maintenance

7.1 Probe Charging

The probe is compatible with wireless charging. Place it on the wireless charging pad. The wireless charging mark (diffusion waveform) under the probe is aligned with the charging mark of the wireless charging board. When the battery capacity indicator is blinking, this means the probe is charging.

Dual-head version: only supports the wireless charger, please place the probe on the wireless charging board to charge when the battery is low.

NOTE: Please use 5V1A or 5V2A charging input. Higher power input may damage the circuit board.

7.2 Cleaning

CAUTIONS >>> >>>

- 1.Avoid immersing the probe in any conductive liquids to prevent corrosion of the probe and its sheath.
- 2.Ensure the depth of the probe immersed in water does not surpass the marked probe immersion line. Regularly inspect the probe shell for any cracks to prevent damage to internal components due to liquid ingress.
- 3.Before cleaning the probe, ensure that it is switched off to prevent any electrical hazards or damage.

STEPS >>> >>>

- 1.After each use, clean the probe with a soft cloth dampened with Isopropyl alcohol or an appropriate hospital-grade cleaning agent.
- 2.Disconnect the probe from the mobile device.
- 3.Wipe the probe for one minute and until it is visibly clean.
- 4.Change wipes when necessary and repeat Step 3 until the probe is visibly clean.
- 5.Visually inspect the probe in a well-lit area to ensure all surfaces are clean. If the probe is not clean, repeat the cleaning steps above.

7.3 Disinfecting

CAUTIONS >>> >>>

- 1.The liquid chemical disinfectant should be used in accordance with local regulations.
- 2.Thermal disinfection of the probe is strictly prohibited. If the temperature exceeds 66°C (150°F), the probe will be damaged.
- 3.When disinfecting and immersing the probe, it is forbidden to let the disinfectant level exceed the probe connection line.

STEPS >>> >>>

- 1.When the disinfection time is up, carefully remove the probe from the disinfectant.

2. Rinse the probe with flowing water to remove any disinfectant residue, then gently wipe and dry the probe with a soft lint-free cloth.

3. Once cleaned and disinfected, visually inspect the probe for signs of damage or wear.

7.4 Waterproof Protection

Avoid using the probe in the wild and harsh environments where it may be exposed to the water or other liquids, ensure proper protection for both the probe and the intelligent terminal equipment from water or any liquids.

7.5 Storage

When not using the probe, ensure to store the probe in a designated packaging to prevent it from any accidental damage. The probe should be stored in clean, dry environment with moderate temperatures. It is crucial to avoid exposure to high heat. The recommended storage temperature: 0°C ~ 40°C or 32°F ~ 104°F.

7.6 Trouble Shooting

Inspection: verify if the probe and the host device is properly connected.

NO.	Problem	Solution
1	No response after pressing the power switch	<ol style="list-style-type: none"> 1. Ensure the power switch is functioning properly. 2. Check that the device is not obstructed and that there are no external factors preventing operation. 3. Confirm that the device has sufficient battery power or is properly plugged into a power source. 4. Attempt to power on the device again after a brief pause. <p>If the issue persists, consult the user manual for further guidance or contact customer support for assistance.</p>
2	Display on the screen to show the band or snowflake like interference.	<ol style="list-style-type: none"> 1. Check if any other electrical device is working 2. Check the electric field or magnetic field in the surrounding environment.
3	The image area is dark.	You can adjust the brightness.

NO.	Problem	Solution
4	APP cannot work normally.	Check if the WiFi connection between app and your cellphone/tablet is normal. Restart the APP.

7.7 Maintenance Warranty

Our company provides a comprehensive warranty for this new instrument, covering material defects and technological issues, for a period of 18 months since the delivery date from the manufacturer. During this warranty period, we offer free maintenance services for the product. It is important to note that consumables are generally excluded from this warranty coverage. Please be aware that this warranty does not apply to instruments that have been subjected to unauthorized modifications, disassemblies, reconfigurations, or self-repairs. Additionally, it does not extend to damages resulting from accidents, natural disasters such as fires, floods, or acts of nature including thunder and lightning, or damages due to intentional actions, improper installation, or misuse.

Should you require maintenance or service, please visit our website at www.viatomcare.com to get in touch with our support team.

Manufacturer

Guangzhou Sonostar Technologies Co., Ltd.

504#,C Building,#27 Yayingshi Road, ScienceTown, Guangzhou,
510665, P.R.China



Shenzhen Viatom Technology Co.,Ltd. Tel: +86-755-23729241

Web: www.viatomcare.com Email: marketing@viatomcare.com

Add: 901, Building West, Lepu Tower, No.66 Xingke Road, Xili
Community, Xili Street, Nanshan District, Shenzhen, 518055,
Guangdong, P.R. China

Version: D

Date: Oct. 2025



Shenzhen Viatom Technology Co.,Ltd.

Téléphone: +86-755-23729241

Web: www.viatomcare.com Email: marketing@viatomcare.com

Adresse: 901, Building West, Lepu Tower, No.66 Xingke Road, Xili
Community, Xili Street, Nanshan District, Shenzhen, 518055,
Guangdong, P.R. China

Version: E

Date: Dec. 2025