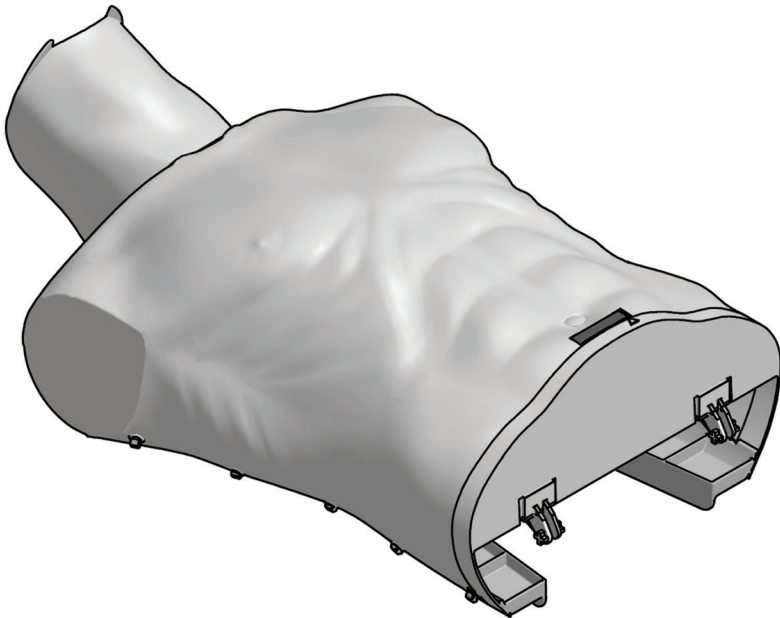


Ambu A/S
Baltorpbakken 13
DK-2750 Ballerup
Denmark
T +45 72 25 20 00
F +45 72 25 20 50
www.ambu.com

Directions for use

Ambu[®] Man Compression



1. Introduction

The Ambu® Man Compression is a basic instruction and training manikin for the practise of external chest compression.

The AmbuMan Compression has the size of a normal adult torso and provides a lifelike representation of the human anatomy, particularly of those features important to training in modern resuscitation techniques including the placement of AED pads.

2. Specifications

Weight: approx. 2,0 kg

Dimensions (L x W x H): 45 x 37 x 25 cm

Maximum chest compression: 7,5 cm

Part/Material	
Chest Unit	SEBS, Styrene-Ethylene-Butylene-Styrene
Neck	PP, Polypropylene
Basic Unit	ABS, Acrylonitrile butadiene styrene

For further product information see www.ambu.com

Usage and storage:

Storage temperature: -20 °C to 70 °C

3. Functions

3.1 Compression indicator

The compression indicator shows the correct depth of the chest compression. When compressing the chest of AmbuMan Compression the indicator will show a red bar until the correct depth is reached. Once the correct depth is reached the indicator will change into a green bar. If the compression is continued too deep the indicator will change back into a red bar.

The compression indicator will show a green bar at a compression depth of 5cm to 6 cm.

4. Preparation for training

The AmbuMan Compression training manikin is supplied in a carry bag. To start the training remove the manikin from the bag and fold up the neck.

5. Usage of the AmbuMan Compression

The AmbuMan Compression is designed to meet all the training recommendations for performing external chest compression of the AHA(American Heart Association) and the ERC(European Resuscitation Council). In general, however, it is recommended that instruction should be based on the techniques and provisions applicable locally

5.1 Compression

External chest compression can be practised, and the depth of compression will be displayed on the indicator bar.

5.2 Placement of AED pad

If the training with AED is performed AED pads can be placed on the manikin.

NOTE: The manikin can only be used with Training AED's

6. Cleaning

The neck and body of the AmbuMan compression should be wiped over with a cloth moistened in a mild detergent and then wiped over once more using a cloth moistened in clean water.

Marks on the AmbuMan compression left by a ball pen can penetrate the material and should therefore be removed as quickly as possible using alcohol.