

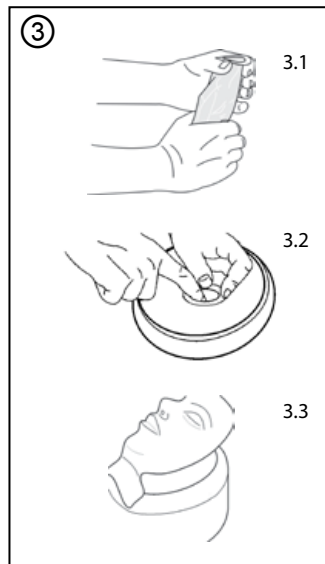
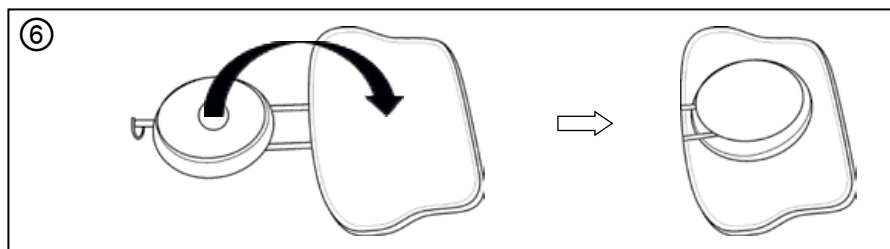
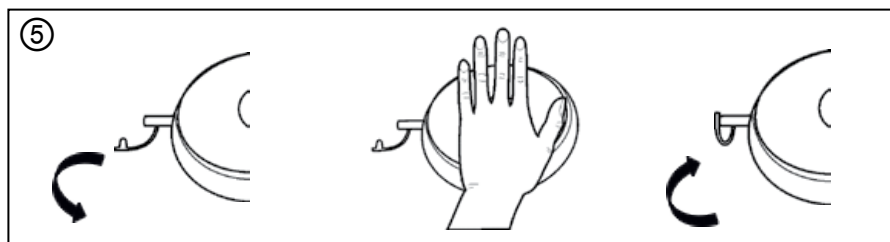
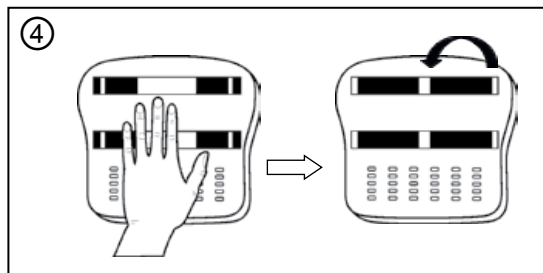
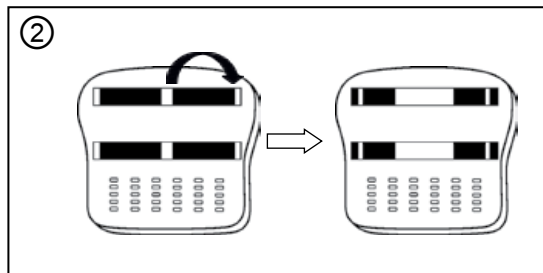
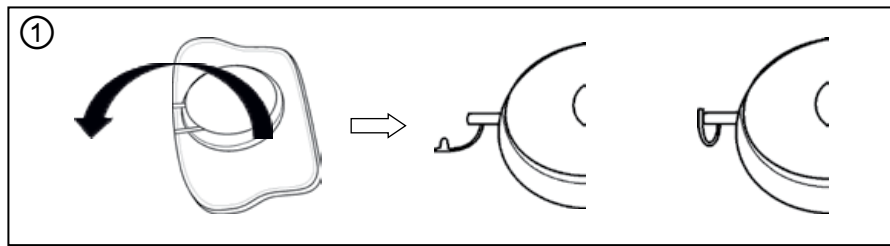
Directions for use

Ambu[®] Man School



Ambu A/S
Baltorpbakken 13
DK-2750 Ballerup
Denmark
T +45 72 25 20 00
F +45 72 25 20 50
www.ambu.com

492516040 - 11/2016 - V01 - Printed in China



Contents

| | |
|-----------------------------------|---|
| 1. Introduction | 4 |
| 2. Specifications | 4 |
| 2.1. Dimensions | 4 |
| 2.2. Material | 4 |
| 2.3. Usage and storage | 4 |
| 3. Usage | 4 |
| 3.1. Preparation for the training | 4 |
| 3.2. After the Training | 5 |
| 3.3. Cleaning | 5 |
| 3.3.1. Face piece | 5 |
| 3.3.2. Cleaning of head and body | 5 |

Page

1. Introduction

The AmbuMan School can be used for demonstration and training of all procedures for basic life support resuscitation.

It is intended to be used for education of pupils in schools under the supervision of an instructor/teacher.

The AmbuMan School will be used mainly focused on below specifications for resuscitation procedure training.

- Mouth-to-mouth ventilation
- Mouth-to-nose ventilation
- External chest compression
- Placement of AED pads

2. Specifications

2.1. Dimensions

Weight: 0,8 kg

Dimensions (L x W x H): 45 x 30 x 10 cm

2.2. Material

| | | | |
|------------|-------------------------|------------|-------------------|
| Straps | Nylon | Head | Silicone |
| Base plate | Polycarbonate | Face piece | Polyvinylchloride |
| Bellow | Thermoplastic Elastomer | Lung bag | Polyvinylchloride |
| Chest | Polypropylene | Head bag | Polyethylene |

2.3. Usage and storage

Storage temperature (non-condensing): -18 °C (-0,4 °F) to 40 °C (105 °F)

Usage temperature (non-condensing): -5 °C (23 °F) to 40 °C (105 °F)

Humidity: 5 % to 95 %

3. Usage

3.1. Preparation for the training

Unfold the head to the top and inflate the head. Close the air valve after inflation. ①

Turn the manikins upside down, release the straps from the middle and secure on the Velcro on the outside. ②

Insert a head bag and mount the face piece to the head. ③

The manikin is now ready for the CPR training.

NOTE:

Only use a pump or syringe to inflate the head to avoid contamination of the head.

If the head collapses during use, open the head valve and re-inflate the head to a sufficient level.

Never use the manikin without a head bag, as contamination of the inside can occur.

The head bags and face pieces must be changed before use by a new trainee.

3.2. After the Training

Remove the Face piece and head bag and discard the head bag.

Clean the body and the face piece as described in section 3.3.

Turn the manikin upside down, push the baseplate in the centre to compress the manikin.

Pull the strap sideways first and then fix the strap with the Velcro in the middle of the base plate. ④

Open the air valve and compress the head to deflation, then close the air valve. ⑤

Flip the head on the chest and place the manikin back into the box for storage. ⑥

3.3. Cleaning

3.3.1. Face piece

Manual cleaning

A. Rinse face piece in clean water.

B. Wash items in warm water, max. 65 °C (150 °F), use a mild detergent.

C. Rinse thoroughly in clean water to remove all traces of detergent.

Machine washing

The face pieces can be washed in an ordinary washing machine. Apply normal dose of detergent and choose a washing programme with maximum temperature of 70 °C (158°F).

Disinfection

A. Place the items in a sodium hypochlorite solution with minimum 500 ppm freely accessible chlorine (1/4 a cup of liquid household bleach per gallon (approx. 4 litres) of tap water for 10 minutes). This solution must be fresh and should be discarded after use.

B. Place the items in a 70 % alcohol chlorhexidine solution for 2 minutes (70 % Ethylalcohol and 0.5 % chlorhexidine).

C. Chemical disinfection can also be performed using recognised disinfectants suitable for use with polyvinylchloride (PVC). The supplier's directions on dosage and disinfection period should be closely followed.

D. Always rinse the items in clean water after disinfection and allow to dry before storing.

NOTE: The face pieces must not be exposed to boiling, autoclaving or gas sterilisation.

3.3.2. Cleaning of head and body

The head and body should be wiped using a cloth moistened in clean water.