



GIMA

PROFESSIONAL MEDICAL PRODUCTS

PACCHETTO TEST BOWIE DICK
BOWIE DICK TEST PACK
PACK TEST DE BOWIE DICK
PAQUETE DE PRUEBA BOWIE DICK
PACOTE DE TESTE BOWIE DICK
BOWIE-DICK-TESTPAKET
ПАКЕТО ΕΛΕΓΧΟΥ BOWIE DICK

- Manuale d'uso e manutenzione
- Use and maintenance book
- Instructions de fonctionnement et entretien
- Manual de uso y mantenimiento

- Manual de uso e manutenção
- Betriebs und wartungsanweisungen
- Εγχειρίδιο χρήσης και συντηρησης

ATTENZIONE: Gli operatori devono leggere e capire completamente questo manuale prima di utilizzare il prodotto.

ATTENTION: The operators must carefully read and completely understand the present manual before using the product.

AVIS: Les opérateurs doivent lire et bien comprendre ce manuel avant d'utiliser le produit.

ATENCIÓN: Los operadores tienen que leer y entender completamente este manual antes de utilizar el producto.

CUIDADO: Os operadores devem ler e compreender este manual completamente antes de usar o produto.

VORSICHT: Bediener müssen dieses Handbuch vollständig lesen und verstehen, bevor sie das Produkt verwenden.

ΠΡΟΣΟΧΗ: Οι χειριστές πρέπει να διαβάσουν και να κατανοήσουν πλήρως αυτό το εγχειρίδιο πριν από τη χρήση του προϊόντος..

GIMA 35950



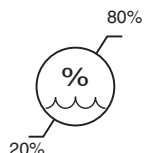
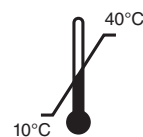
SP Medikal San Ltd. Sti
Deliklikaya Mah. Cubuklu Cad. 39
Arnavutkoy Istanbul Turkey
info@spmedikal.com
Made in Turkey

REF

102.002.0020



Gima S.p.A.
Via Marconi, 1 - 20060 Gessate (MI) Italy
gima@gimaitaly.com - export@gimaitaly.com
www.gimaitaly.com



Direction for use**Product name:**

Bowie Dick Test Pack

Product reference:

102.002.0020 Bowie Dick Test Pack ECO

Content:

- 1 Direction for use
- 2 Interpretation examples

Bowie Dick Test Pack - Instructions for use

A Bowie Dick Test is an obligatory test to be run at the beginning of each day. Before starting a Bowie Dick Test the steam sterilizer should be heated up first.

Place the Pack on the bottom rack of your loading trolley, centrally and in close vicinity of the drain. Do not add any load as they may effect the test.

Run a pre-vacuum cycle of at 134C - 3,5 minutes (standard Bowie Dick Test Cycle)

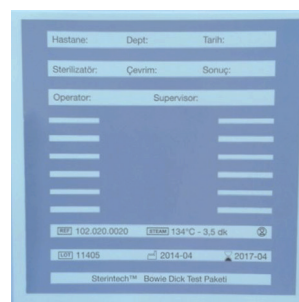
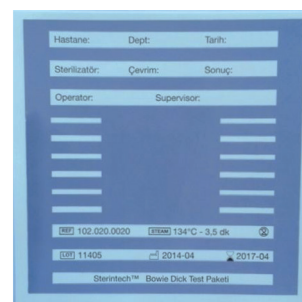
After completion of the cycle , open the sterilizer and remove the pack. Open the box at the top and remove the indicator sheet which is located in the middle of the pack. Examine the color change.

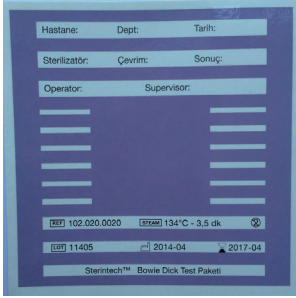
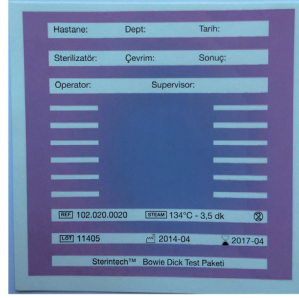
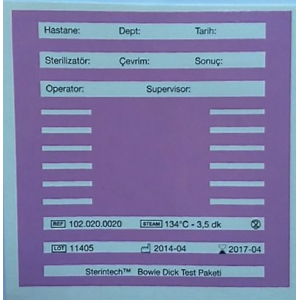
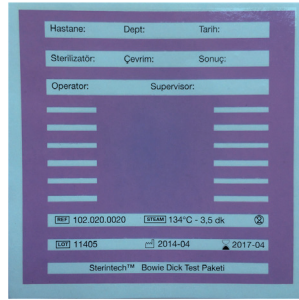
⚠ Warning: Pack may still be hot !! Take precautions by handling carefully to avoid any injury.













After evaluation, record the data by filling out all fields on the Indicator sheet with related data and store the indicator sheet for future reference.

The box incl. the carton sheets may be discarded as normal paper waste.

For interpretation of the Bowie Dick Test Pack indicator sheet pls refer to our technical data sheet.

Test results:**Original color****Dry Heat 140 C - 30 min result**

No Vacuum**Only one vacuum pulse****Two vacuum pulses****Full cycle - three vacuum pulses****Symbols:**

	Date of manufacture		Keep in a cool, dry place
	Manufacturer		Keep away from sunlight
	Product code		Temperature limit
	Lot number		Humidity limit
	Expiration date		Caution: read instructions (warnings) carefully
	Imported by		Consult instructions for use

GIMA WARRANTY TERMS

The Gima 12-month standard B2B warranty applies