



GIMA

PROFESSIONAL MEDICAL PRODUCTS

LED CANE

User manual

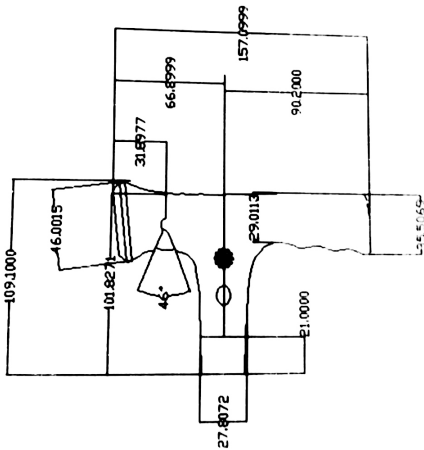


WARNING:

Be sure to read all information and directions before use!!

- DO NOT try to disassembly this equipment by yourself.
- DO NOT insert any needle or sharp article into the grip.
- DO NOT knock the cane at the floor and any harden surface.
- ALWAYS turn off the switch before taking out the batteries.
- ENSURE to keep the cane from fire.
- **110kg** maximum weight capacity.

GRIP SPECIFICATION



- 4 pieces of ultra-bright ϕ 5 white LEDs light.
- 2 pieces of ultra-bright ϕ 5 red LEDs flash warning.
- 100 dB siren function.
- Attach with a hand strap.
- Folding or adjustable cane available

REF

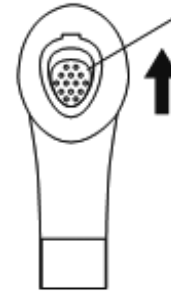
GB-806 (GIMA 43050)
GB-806 (GIMA 43052)

Importato da/Imported by/Importé par/Importado por
GIMA S.p.A. - Via Marconi, 1 20060 Gessate (MI) - Italy
gima@gimaitaly.com - export@gimaitaly.com
www.gimaitaly.com

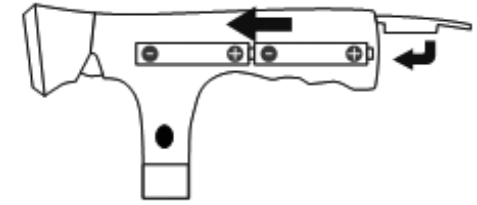
Fabbricato da/Manufactured by/Fabriqué par/Fabricado por:
Ningbo Gaobo Sports Co., Ltd. No.1, Dali, Shenzen Town, Ninghai County
Ningbo 315614, China
Made in China



ASSEMBLY

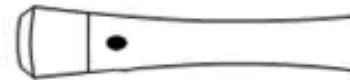


Flip up to open the lid on the back.



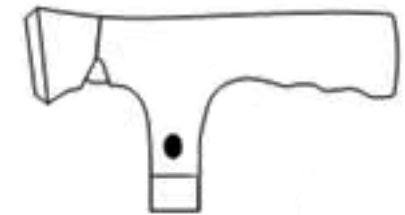
Put 2 pcs AAA batteries inside the grip, then flip down the lid to close it.

FUNCTIONS OF SWITCH ON/OFF



Top button

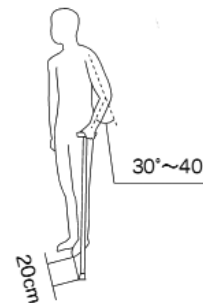
- Push once to turn on the LEDs light.
- Push twice to turn on the warning white LEDs light + red LEDs flash simultaneously.
- Push again to turn it off.



Side button

- Push to start the buzzer warning.

NOTE OF USE



Best use position recommended.



Adjustable height.
10 position from 78 to 100.5 cm.



Disposal: The product must not be disposed of along with other domestic waste. The users must dispose of this equipment by bringing it to a specific recycling point for electric and electronic equipment.

GIMA WARRANTY TERMS

The Gima 12-month standard B2B warranty applies.