

UNICA520 ‘Wi-Fi Camera System’

UNICA520 lamp is now available with ‘Wi-Fi Camera System’, which allows the distribution of video signal without physical connection between lamp itself and visualization device.

Wi-Fi system composition

The Wi-Fi system is mainly composed by a *Transmitter* and a *Receiver* (fig.A)



fig.A

The *Transmitter* is the one to be connected to Camera System of UNICA lamp and is equipped with an ‘HDMI’ input port (fig.B)



fig.B

The *Receiver* is the one to be connected to visualization device (Monitor, PC ...) and is equipped with an ‘HDMI’ output port (fig.C)

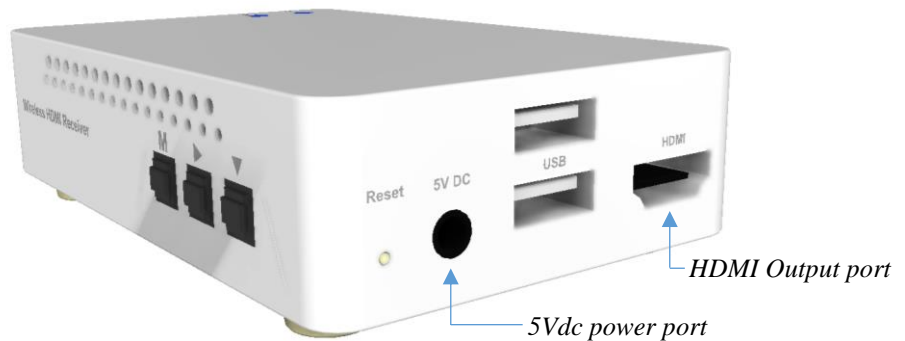


fig.C

System hardware connection

Transmitter and Receiver are small boxes that will be located externally with respect to lamp structure.

Transmitter has to be placed on bent tube of cupola fork by means of a special clamp already mounted on transmitter itself (*fig.D*).

This kind of mounting is suitable both for lamp with single fork (*fig.E, F*) both for lamp with double fork (*fig.G, H*)



fig.D



fig.E, F

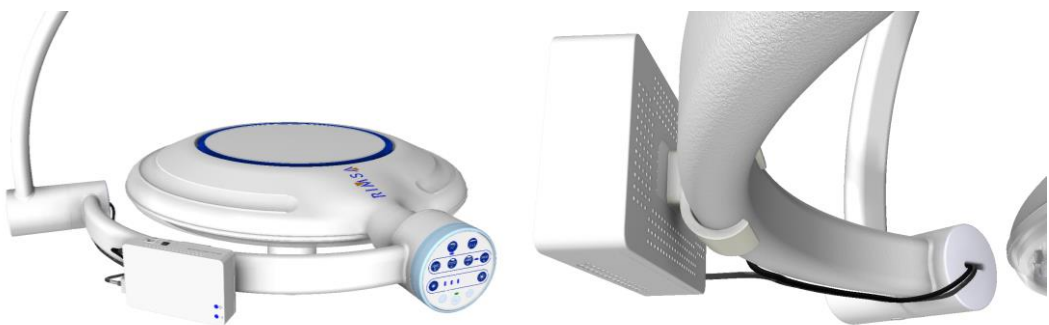


fig.G, H

Receiver has to be placed near to the visualization device (fig.I)



fig.I

System wiring connection

Transmitter has to be connected to HDMI cable and power cable that are coming from lamp cupola (fig.L).

For this purpose, such cables are made coming out from central joint through an opening on the covering cap. This solution is suitable both for single fork (fig.M) both for double fork (fig.N).

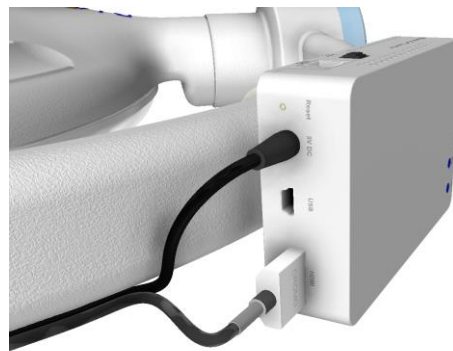


fig.L

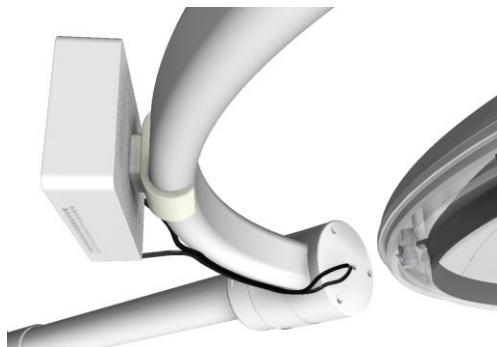


fig.M

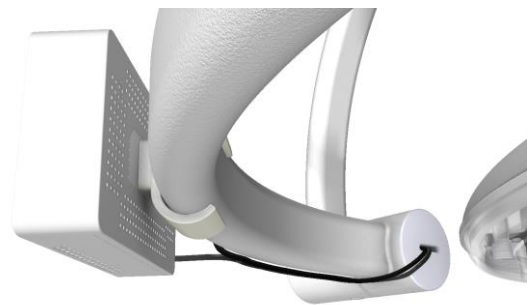


fig.N

A very short portion of these cables will remain on sight

Receiver has to be connected to power cable of relative power adapter and, by means of HDMI cable, connected to the visualization device (fig.0).

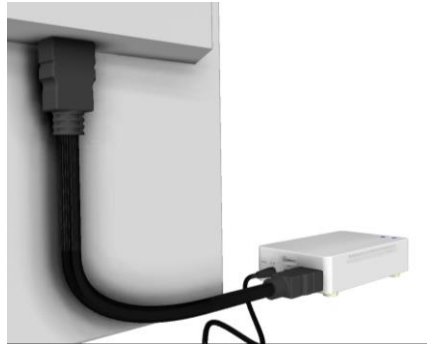
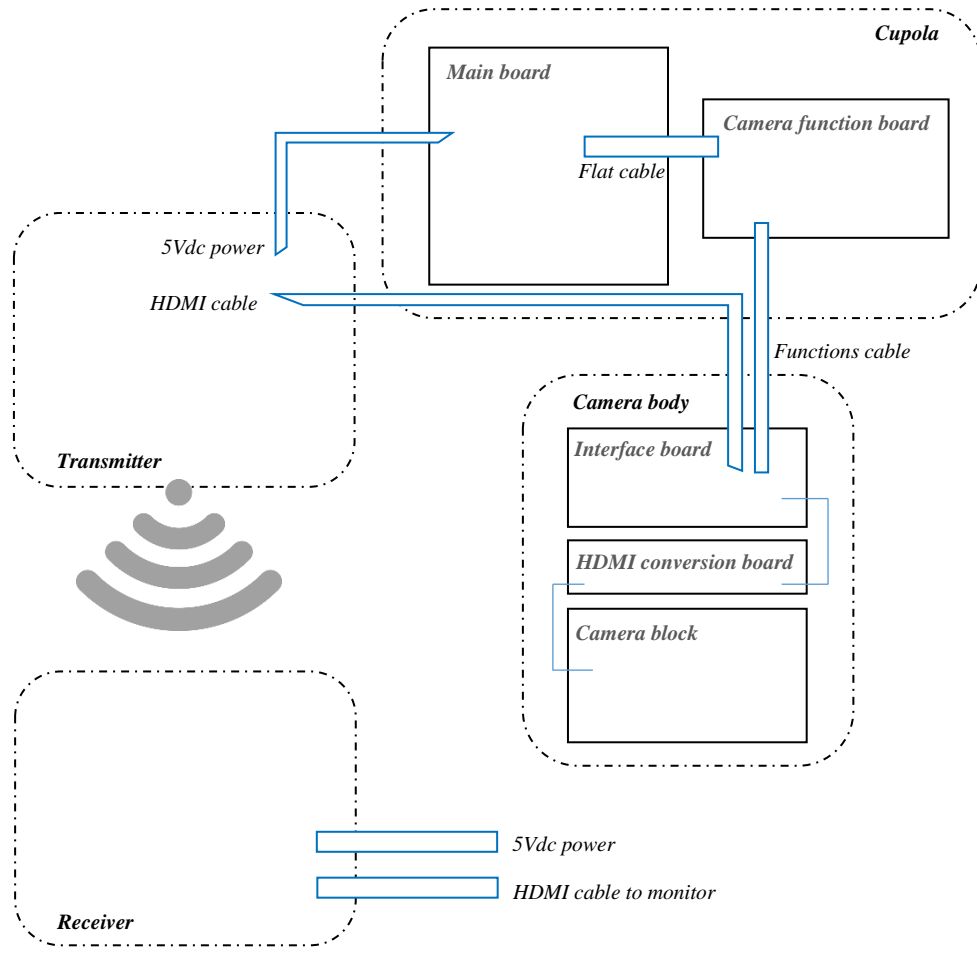


fig.0

Difference with standard Camera system

In addition to the Wi-Fi kit shown above, the UNICA520 lamp ‘Wi-Fi’ capable has some other differences with respect to the one equipped with standard camera system (with normal transmission of video by cables). This means that there is no compatibility between the two versions of lamp and so, the camera body suitable for one of them cannot be mounted on the other one.

General scheme



Complete camera system and Predisposition camera system comparison

UNICA520 lamp, depending on customer needs, can be provided in two different versions:

- ‘Predisposition for CAMERA’ version
- ‘Complete CAMERA system’ version

With ‘Predisposition for CAMERA’ version, the camera system is not functional lamp but the lamp is suitable to fit a complete camera system.

With ‘Complete CAMERA system’ version, instead, the camera system is totally functional.

In *Table.1* are listed the components that are present on the lamp in relation to the two available versions:

<i>Component</i>	<i>Predisposition system</i>	<i>Complete system</i>
Attachment kit for Predisposition sterilizable handle	✓	-
HDMI and Power cabling for Emitter	✓	✓
Predisposition sterilizable handle	✓	-
Camera remote control (Plate or Box)	✓	✓
Camera body	-	✓
Camera sterilizable handle	-	✓
Wi-Fi Emitter and Receiver kit	-	✓

Tab.1

Symbol legend: - Not present
 ✓ Present



RIMSA

HD camera system

High quality, high resolution compact, lightweight colour cameras

The FCB-EV7100 employs 1/2.8-type Exmor CMOS image sensor with Full HD (1080/60p) performance, and achieves excellent zooming performance with a 10x optical zoom lens. The camera inherits a multitude of features from Sony's world-renowned FCB Series including Wide-D wide dynamic range, Auto ICR.

- Full HD 1080/60p images

Image sensor with approx. 2.38 Megapixels.

- 10x optical zoom

Offers F1.8 to F3.4 aperture.

- Light, compact design

The camera has a mass of 210 g (7.4 oz) and dimensions of 45.6 x 48.8 x 78 mm (1 13/16 x 1 15/16 x 3 1/8 inches).



RIMSA

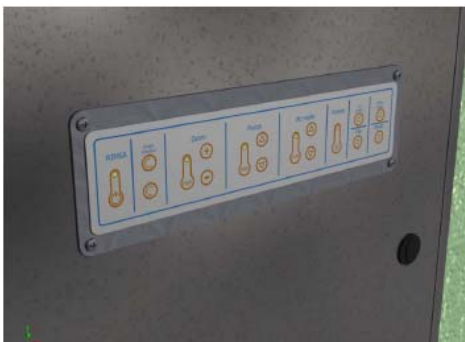
Technical specifications:

FULL HD TVCC "SONY FCB-EV7100"	
Image device	1/2.8 type CMOS
Image effective elements	Approx. 2,38 Megapixel
Horizontal resolution	Full HD 1080/60p (1920 x 1080)
Lens	10x optical zoom, f=3.8mm (wide) to 38mm (tele), F1.8 to F3.4
Digital zoom	12x (120x with optical zoom)
Visual angle (H)	67° (wide) to 7.6° (tele)
Minimum distance objective	10mm (wide), 800mm (tele) (Default: 320mm)
Minimum illumination	1.4 lux
White balance	Auto, Indoor
AE control	Auto, Manual
Focusing	Full Auto, Manual
Video output	HD: Analog component Y/Pb/Pr / SD: VBS: 1.0 Vp-p (sync negative) Y/C
Operating voltage	6 to 12 Vdc
Electric absorption	3.7 Watt

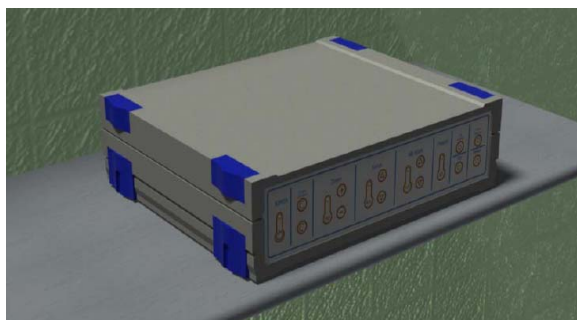
Controls available:

- TVCC camera control panel :

Plate on wall (standard)

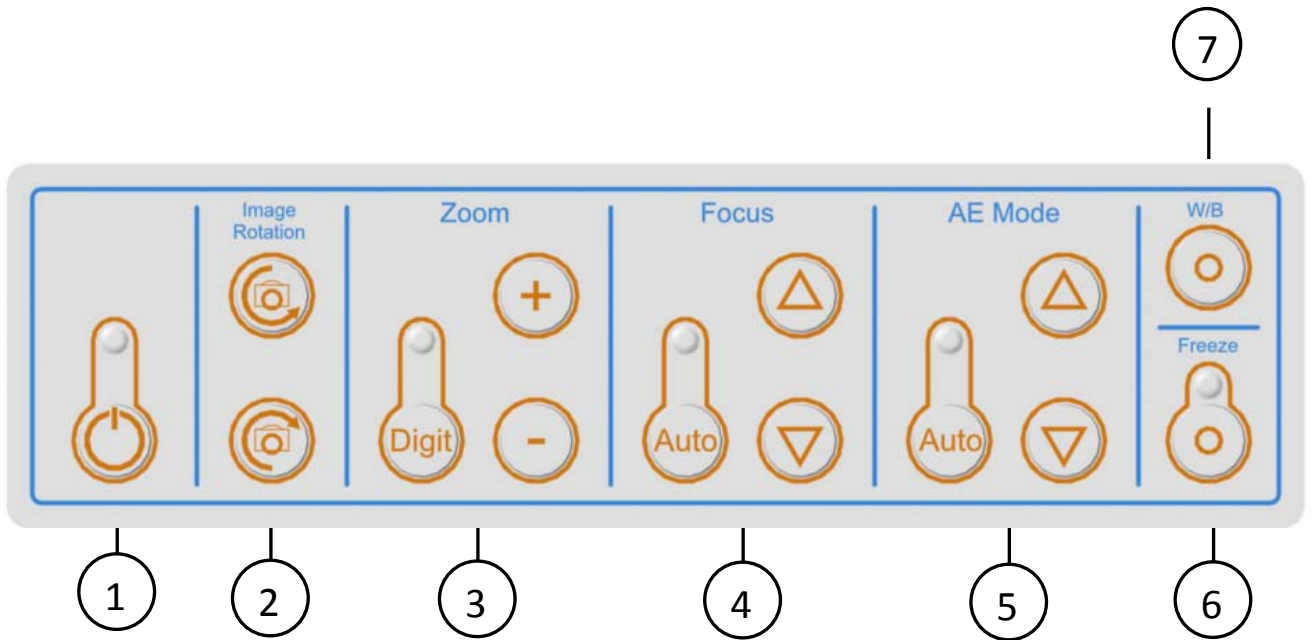


Box on shelf (on demand)



Control panel

Camera functions are: on/off I/O key (1), image rotation (2), Zoom adjustment (3), focus adjustment (automatic and manual) (4), exposure adjustment (automatic and manual) (5), freeze image (6), white balance (7)



Plug and Play TV CAMERA:

