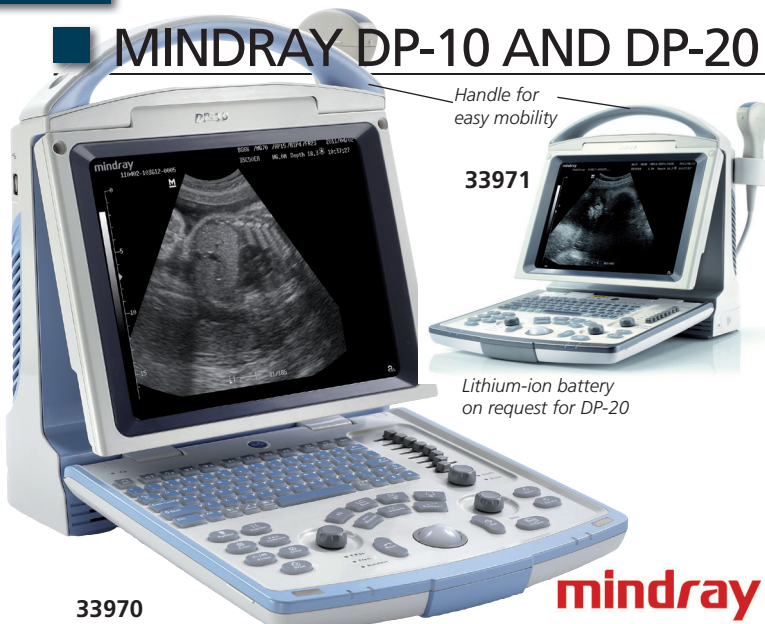


# MINDRAY DP-10 AND DP-20 DIGITAL ULTRASOUND SYSTEM



Handle for easy mobility

33971

Lithium-ion battery on request for DP-20



### DP-10 slim and smart

Good image quality, easy to use and lightweight to take it anywhere. It combines fashionable design, diagnostic confidence and economy.

### DP-20 exceeds your expectations

Smart portable B/W ultrasound system with advanced features

### Display modes and imaging processing:

Broadband, multi-frequency imaging: B, B/B, 4B, B/M, M

### Imaging processing:

- multi-frequency probes for 2D imaging modes - DP-10 only
- iClear: speckle reduction image - DP-20 only
- THI (Tissue Harmonic Imaging) with convex probe 33976 only
- TSI (Tissue Specific Imaging) - DP-20 only
- zoom function: spot zoom, pan zoom

### User interface

- alphanumeric QWERTY keyboard with backlight
- trackball: speed presettable
- 8-segment TGC
- user defined blank keys: shortcut for easy access to menus

### iStation™ intelligent workflow

Intelligent patient data management system

- integrated search engine for patient data
- detailed patient information review
- intelligent data backup/restore
- patient data/image sending, data deleting (USB, DVD, DICOM)
- exam managing: activate exam

### Storage/review mode:

- image archive on hard disk and USB mobile storage medium, temporary saving in cine memory, directly transfer report to PC
- 2 USB ports
- multiple image formats: BMP, JPG, DCM, FRM, AVI (DP-20 only), DCM, CIN
- iVision: demo player
- Cine review: auto, manual (auto review segment can be set), supports linked cine review for 2D, M images (DP-20 only)
- Cine memory capacity (max.)
- clip length presettable: 1-60 s

B mode: 11959 frames M mode: 110.0 s

Supplied with GB, IT manual FR on request.

### TECHNICAL SPECIFICATIONS

Dimension and weight: 16x29xh 35.4 cm (6.3"x11.4"xh 13.9"); 5.1 kg  
 Display: 12.1" LED, high-resolution 1024x768  
 Display language: DP-10, DP-20: GB, FR, DE, IT, ES, PT, RU, CZ, PL  
 Power: AC100-240 V, 50-60 Hz  
 Rechargeable lithium-ion battery (DP-20 only) - on request

33970

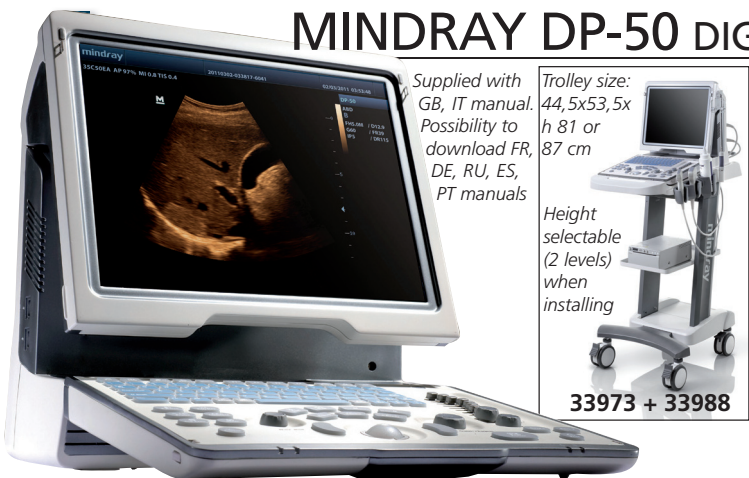
GIMA code	DIGITAL ULTRASONIC DIAGNOSTIC IMAGING SYSTEM
33970	MINDRAY DP-10 B/W system with 1-probe connector, 12.1" high resolution LED monitor, 2 USB port, 1 VGA OUT port, 1 video OUT, 1 S-Video OUT, software, without probe
33971	MINDRAY DP-20 portable B/W system with 1-probe connector, 12.1" high resolution LED monitor, 2 USB port, THI, iStation™, software package, without probe

### ACCESSORIES

33875	Needle guided brackets for Linear probe (33977, 33983)
33876	Needle guided brackets for Micro-Convex probe (33979, 33984)
33974	Lithium-ion rechargeable battery for DP-20
33985	Carrying bag for DP-10, DP-20, DP-30
33986	UMT-110 mobile trolley for DP-10, DP-20, DP-30
33967	SONY PRINTER UP-897 MD

GIMA code	Mindray code	Scanning method	PROBES DP-10 - DP-20 FREQUENCY (MHz)		● Main application										
			Main freq.	Probe band width	ABDOMINAL	OB / GYN	UROLOGY	SMALL PARTS	CARDIOLOGY	MSK	VASCULAR	PEDIATRIC	ORTHOPEDECS	INTRAOPERATIVE	
33976	35C50EB	Convex	3.5	2.0 - 5.0	•	•	•								
33977	75L38EB	Linear	7.5	5.0 - 10.0				•	•	•	•	•	•		
33978	65C15EA	Convex	6.5	5.0 - 8.5				•							
33979	65EC10EB	Micro-convex	6.5	5.0 - 8.5				•							
33980	35C20EA	Micro-convex	3.5	2.0 - 5.0	•	•	•								
33983	75L53EA	Linear	7.5	5.0 - 8.5	•			•							

# MINDRAY DP-50 DIGITAL ULTRASOUND DIAGNOSTIC SYSTEM



Supplied with GB, IT manual. Possibility to download FR, DE, RU, ES, PT manuals

Trolley size: 44, 5x53, 5x h 81 or 87 cm

Height selectable (2 levels) when installing

33973 + 33988

• 33973 MINDRAY DP-50 PORTABLE ULTRASOUND with 15" high resolution LCD monitor, 2 probe connectors, 320GB hard disk, 4 USB ports, multiple software package, without probes.

Imaging mode: B, B/B, 4B, B/M, M

### Image processing technology:

- Phase Shift Harmonic Imaging - Tissue Harmonic Imaging
- iBeam™ Spatial Compound Imaging
- iClear™ Adaptive Speckle Suppression Imaging
- iTouch™ Auto Optimization - Trapezoid imaging
- iZoom™ Automatically expand the image to full screen
- Slant scanning for linear probes (2D Steer)

Wideband multifrequency probes: continuously adjustable 2-14 MHz

### Intelligent Workflow/Storage/Review:

- iStation™ Intelligent patient data management system
- 320 GB integrated hard disk for storage - 4 USB ports
- Cine memory capacity (Max.) B mode: 10566 frames M mode: 66.3 s

• 33975 LITHIUM-ION RECHARGEABLE BATTERY for DP-50

• 33987 CARRYING BAG for DP-50

• 33988 UMT-150 TROLLEY for DP-50

• 33967 SONY PRINTER UP-897 MD

### TECHNICAL SPECIFICATIONS

Size and weight: 19x41.5xh 37.8 cm (7.5"x16.3"xh 14.9"); 7.7 kg (17 lb)  
 Display: 15" LCD  
 Display language: GB, FR, IT, ES, PT, RU, PL, CZ, TR, FI, DK, NO, SE, DE  
 Power: AC 100-240 V - 50/60 Hz  
 rechargeable lithium-ion battery - on request

GIMA code	Mindray code	Scanning method	PROBES DP-50 FREQUENCY (MHz)		● Main application										
			Main freq.	Probe band width	ABDOMINAL	OB / GYN	UROLOGY	SMALL PARTS	CARDIOLOGY	MSK	VASCULAR	PEDIATRIC	PROSTATE		
33982	35C50EA	Convex	3.5	2.0 - 5.0	•	•	•								
33983	75L53EA	Linear	7.5	5.0 - 10.0				•	•	•	•	•	•		
33978	65C15EA	Convex	6.5	5.0 - 8.5				•							
33984	65EC10EA	Micro-convex	6.5	5.0 - 8.5				•							
33990	10L24EA	Linear array	10.0	8.0 - 14	•			•							