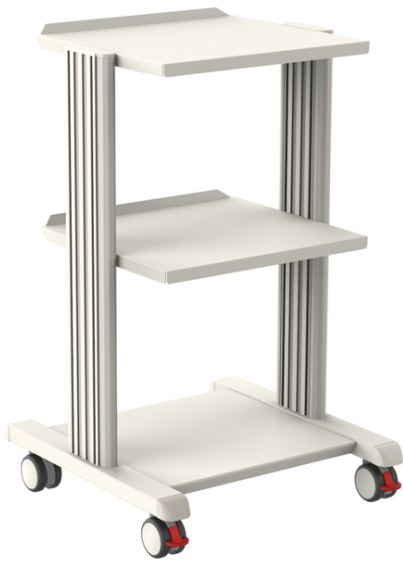


SMART CART - 2 shelves 40x36 cm + base



Product Code	27895
Unit of sale	1 pc
Minimum order	1
Type	Medical device
Class	I

UK-REP	No
CH-REP	No

RDM (NSIS)	173936
CND	V0880
EAN/UPC	8023279278958

Description

SMART CART - 2 shelves 40x36 cm + base

Sturdy carts with painted powder steel base and aluminium frame. 2 shelves with protection edge on back, adjustable at different height.

Suitable for all Gima electrosurgical units.
Illustrated assembly instructions.

First shelf can be mounted flat or tilted $\pm 10^\circ$

4 twinned pivoting castors (2 with brake) \varnothing 65 mm made of thermoplastic rubber and ABS.

Made in Italy.

Technical Specifications

Total load: 80 kg
Load x shelf: 15 kg
Size mm: 482x500xh 780
Weight: 13 kg