

PAINTED OR STAINLESS STEEL MODULAR TROLLEYS SYSTEM



MODULAR TROLLEYS SYSTEM

Modular trolleys made of painted steel or stainless steel, one-piece structure, with wide technopolymer plastic worktop with borders on 3 sides to be cleaned easily, no sharp corners, ergonomic tubular push-handle.

Different drawers (small-yellow, medium-blue, large-red), depending on model, with epoxy painted panels and

integrated handle grip, silent sliding with end-run block.

Possibility to remove the drawers from the guides for an easy cleaning and disinfection. Central lock key.

Overall bumpers and 4 antistatic Ø 125 mm castors, 2 with brakes.

Size: 67x63x104 cm. Weight: 53 kg.

Personalization for minimum 10 pcs: drawers in your colour.

Painted steel	Stainless steel	TROLLEYS
45600	45620	Trolley with 7 small drawers
45601	45621	Trolley with 1 small, 3 medium drawers
45602	45622	Trolley with 2 small, 1 medium, 1 large drawers
45603	45623	Trolley with 1 small drawer, 1 compartment with shelf
45604	45624	Trolley with 2 medium, 1 large drawer

ACCESSORIES FOR ALL MODULAR SYSTEM TROLLEYS

45640	IV stand
45641	Upper drawers (5 medium + 4 large)
45644	Partition h 4 cm for yellow drawer (49x48x10 cm)
45645	Partition h 14 cm for blue drawer (49x48x20 cm)
45646	Partition h 20 cm for red drawer (49x48x30 cm)



WASH-BASIN - PUMP

• 45410 WASH-BASIN PUMP SYSTEM - white

Pump wash-basin with round bowl in satin stainless steel, non-connected to the water mains. The system ensures the availability of water when it is expensive or impossible to lay drain-pipes in the walls or floors.

Dimensions: 47x54xh 86 cm

It only requires a 230V power socket: the low voltage transformer (12V) drives a pump for supplying water by a simple pressure of the foot on the base.



Equipped with 2x20 litre tanks for water supply and drain



UTILITY TROLLEY



45595

Blue Avio
RAL 5014
available
in stock

MADE IN ITALY

• 45595 UTILITY TROLLEY - blue avio • 45597 UTILITY TROLLEY - other colours*

RAL 5010	RAL 2003	RAL 6019	RAL 1013	RAL 3020
----------	----------	----------	----------	----------

*Available in 30 days. Minimum order 5 pcs.

Smart and strong steel structure painted with epoxy powder.

Technopolymer plastic one-piece top with border, without sharp corners, with compartment for accessories.

Ergonomic push handle.

3 medium drawers 45.1x48.5xh 15 cm and 1 large drawer 45x49.5xh 22.5 cm with silent sliding and end-run block.

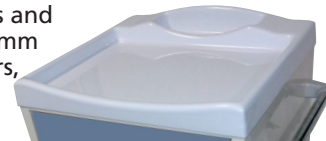
Central lock key. Size: 60x50xh 100 cm

Overall bumpers and

4 antistatic 125 mm

swivelling castors,

2 with brake.



45597 Utility trolleys other colours available in 30 days