

LANG STEREOTEST® I-R AND II-R

LANG STEREOTEST® I-R and II-R

High and modern quality

Improved optical quality of test cards thanks to modern digital and lenticular technology

Homogeneity

Increased homogeneity of the dot pattern

and reduced single-eye recognition

Rounded corners

New surface lamination and

laser cutting

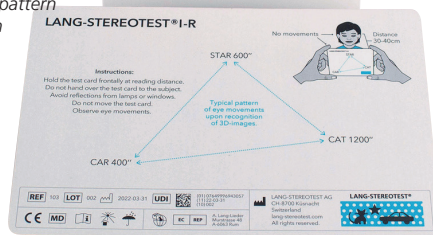
Correct application

schematic drawing and brief

instructions on the back

MDR 2017/745 compliance

LANG-STEREOTEST®-R 31312



• 31312 LANG STEREOTEST® I-R

• 31314 LANG STEREOTEST® II-R

• 31295 LANG STEREOTEST® II

LANG STEREOTEST® represents today's standard of random dot stereo tests without the need of 3D glasses, with very high sensitivity and specificity for stereopsis. The test combines random dots and a lenticular grid surface for quick screening of binocular vision in all groups of age, including very young children. While the test card is presented at reading distance, the patient is asked about what he sees and his eye movements are being observed. Recognition of figures is only possible if the person has full global stereopsis, while patients with amblyopia and (even small angle) strabismus fail the test.

LANG STEREOTEST® I-R shows three stereo figures with disparities of 1200, 600 and 400 arcsec.

LANG STEREOTEST® II and II-R has four stereo figures with disparities of 600, 400, 200 and 200 arcsec, of which one is also monocularly visible. Multilingual instructions: GB, FR, IT, ES, PT, DE, PL, NL, CZ, SE, DK available on www.gimaitaly.com.

• 31296 LANG FIXATION STICK

• 31297 LANG FIXATION CUBE - white

• 31298 LANG FIXATION CUBE - red



31298

MADE IN SWITZERLAND

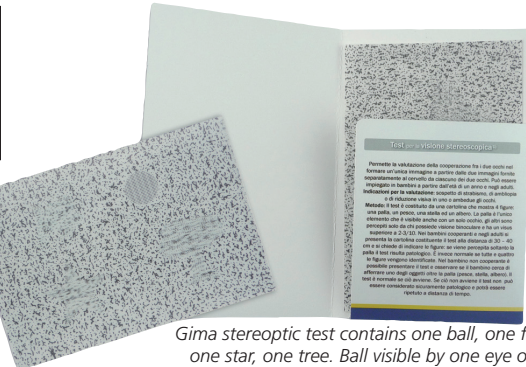
STEREOPTIC TEST

• 31293 STEREOPTIC TEST

Test performed at a distance of 30-40 cm, allowing evaluation of eyes cooperation in providing one single image to the brain, starting from two separately showed figures. Suitable for children from one year old and for adults in case of suspected strabismus, amblyopia or visual reduction.



Four stereo figures with disparities 200" (fish), 400" (star), 600" (tree) and ball always visible.



Gima stereoptic test contains one ball, one fish, one star, one tree. Ball visible by one eye only.

WORTH LED LIGHT TEST

• 31289 WORTH LED LIGHT TEST - with red/green glasses

The Worth 4 dot test, is a clinical test for suppression of either the right or left eye. Suppression occurs during binocular vision, when the brain does not process the information received from either of the eyes. This is a common adaptation to strabismus, amblyopia, and aniseikonia. Battery not included, glasses included.

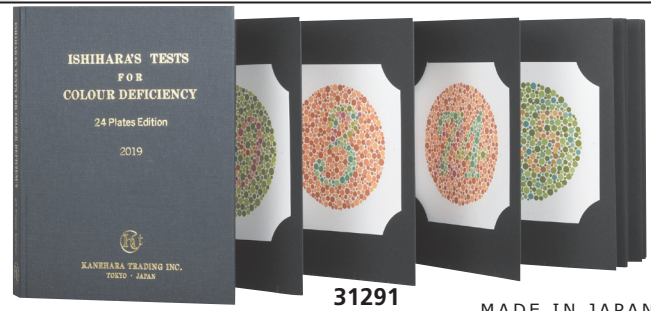
• 32201 "AA" ALKALINE BATTERIES - blister of 4 pcs

Multilingual instructions: GB, FR, IT, ES, PT, DE, GR, Arabic.



31289

ISHIHARA COLOUR TEST



31291

MADE IN JAPAN

ISHIHARA COLOUR TEST

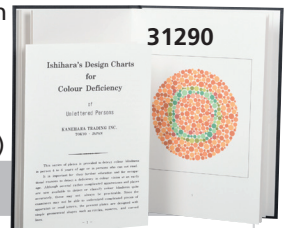
Testing for colour deficiency requires high level of sensitivity and specificity. This series of plates is provided to detect colour blindness in people who can not read, and colour deficiency, since young age. Plates are designed with simple geometrical shapes, since the examinees may not be able to understand complicated pieces. Test gives quick and accurate assessment of colour vision deficiency of congenital origin.

Most cases are diagnosed with red-green deficiency which may be of two types:

- protan, which may be absolute (protanopia) or partial (protanomaly)
- deutan, which may be absolute (deutanopia) or partial (deutanomaly)

GIMA code ISHIHARA COLOUR TEST

- 31290 Book of 10 plates for illiterates
- 31291 Book of 24 plates
- 31292 Book of 38 plates



31290

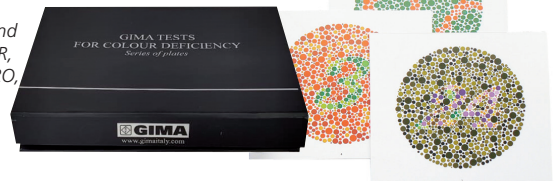
GIMA COLOUR TEST

• 31288 GIMA ADULT COLOUR TEST - 15 plates

• 31286 GIMA PEDIATRIC COLOUR TEST - 10 plates

Single plates (11.5x11 cm) packed in a practical cardboard box (13.5x11.5x2.3 cm).

Multilingual box and instructions: GB, FR, IT, ES, PT, DE, PL, RO, LT, SK, Arabic



SCHIÖTZ TONOMETER



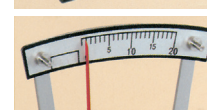
CE 0124

• 31220 SCHIÖTZ TONOMETER - straight scale

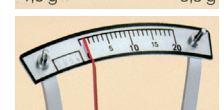
• 31222 SCHIÖTZ TONOMETER - inclined scale

A masterpiece of precision mechanism, measures intraocular pressure according to Prof. Schiötz standards. Vital parts are made of stainless steel. High quality agate bearing for extremely long service life. Set 3 weights included (5.5-7.5-10 g). Scale specification 5. In black deluxe case with velvet-look inserts. Perfect reading of the scale with red pointer.

MADE IN GERMANY



31220 straight



31222 inclined