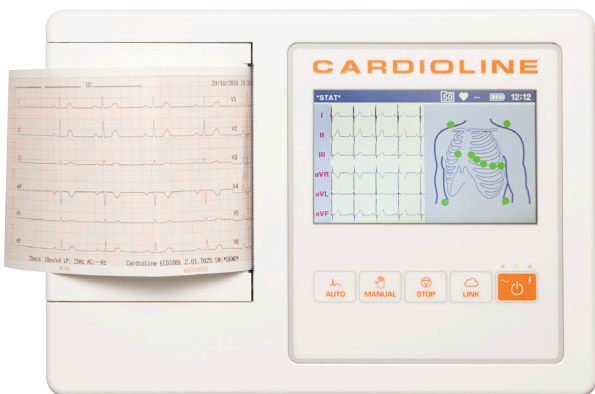


CARDIOLINE COLOUR TOUCH SCREEN 12 LEAD ECG

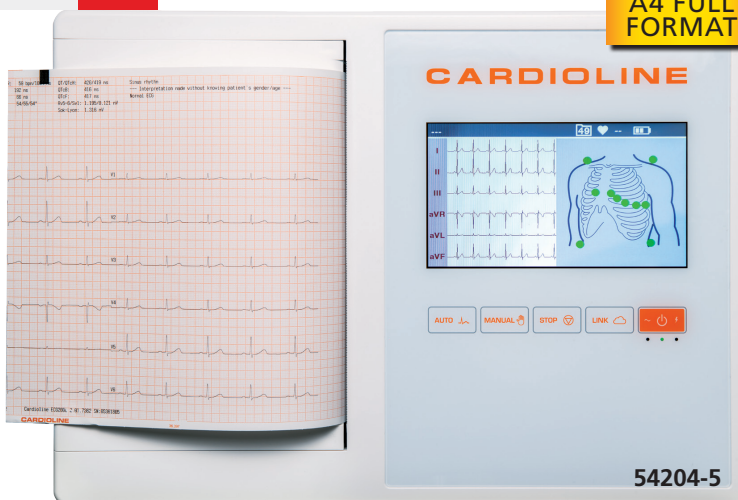
PORTABLE

MADE IN ITALY

A4 FULL FORMAT



54200-1-2



54204-5

- 54200 CARDIOLINE ECG 100L BASIC - 5" screen
- 54201 CARDIOLINE ECG 100L GLASGOW - 5" screen
- 54202 CARDIOLINE ECG 100L FULL (Glasgow + EasyApp) - 5" screen
- 54204 CARDIOLINE ECG 200L GLASGOW - 7" screen
- 54205 CARDIOLINE ECG 200L FULL (Glasgow + EasyApp) - 7" screen

The Cardioline ECG have been designed to provide simple and fast 12 lead resting ECG acquisition for the private practice. Particular attention has been dedicated to device usability using a brilliant 5" (54200-2) or 7" (54204-5) colour touch screen display, as well as dedicated keys for fast operation. User is guided through ECG acquisition step by step, from electrode placement, to quality checking, acquisition, printing and storage. Automatic, manual, Stat or rhythm ECGs can alternatively be acquired at the simple touch of a key. The new Rhythm ECG function allows for rhythm analysis of 3 minutes of ECG, including HR trending and Variability. ECG files can be stored on the device or exported, through USB connection to a PC or a memory stick.

Support most printing formats

Standard or Cabrera 3, 3+1, 3+3, 6, 12 (12 only 54204-5) channels in automatic mode and 3, 6 or 12 printout channels in continuous mode, as well as printout of the rhythm strip.

Multilingual switchable internal software in 16 languages

GB, FR, IT, ES, PT, DE, RO, RU, CZ, HR, BR, HU, NL, TR, RS, PL.

STANDARD ACCESSORIES

Patient cable	2 rolls of paper (for 54200-2)
Battery	1 pack of 180 sheets (for 54204-5)
Power cable	Adaptor for snap connector 4 mm (box of 10)
Glasgow interpretation (54201-5)	Disposable tab electrodes (box of 100)
CD Manual (GB, FR, IT, ES, PT, DE, NL, CZ, HR, HU, PL, RO, RU)	

TECHNICAL SPECIFICATIONS

ECG acquisition	
ECG channels:	12-lead (I, II, III, aVR-L-F, V1-6)
Patient cable:	Standard 15D, 10-wires
CMRR:	>100 dB
Input impedance:	100 MΩ
Sampling rate of the input stage:	32000 samples/second/channel
ECG resolution:	5μV/LSB; 500 s/s
Dynamic range:	± 325 mV
Bandwidth:	Performance equivalent to 0,05-150 Hz
Pacemaker detection:	Hardware detection coupled with convolution digital filtering
Filters:	Linear phase digital diagnostic high-pass filter (acc. to 60601-2-25 2nd ed.) 50/60 Hz AC interference adaptive digital filter Digital low pass filters at 25/40 Hz, for display and printing only
Defibrillation protection:	AAMI/IEC standards
Front-end performance:	ANSI/AAMI IEC 60601-2-25:2011
Acquisition mode:	Automatic (12-leads), Manual (3/6-leads only 54200-2), Manual (3/6/12-leads only 54204-5) Stat (12-leads), Rhythm (1/3-leads)
Configuration:	Standard or Cabrera
Lead fail detection:	Independent on all leads
Heart rate meter:	30-300 bpm
ECG measurements:	All leads, average, corrected; HR; Average RR; PR interval, QRS duration QT interval and QTc interval, with Hodges, Bazett and Fridericia's formula max R[V5] or [V6] and S[V1] Sokolow-Lyon index; P, R, T axis

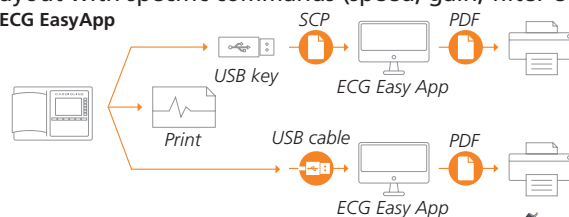
Glasgow algorithm for pediatric and adult interpretation (only 54201 - 54205)

The algorithm can diagnose any abnormality, usually recognizable through ECG: myocardial infarction, including AMI, ventricular hypertrophy, ST-T and common rhythm anomalies. Furthermore, the program detects conduction and QT interval prolongation malfunctions.

ECG EasyApp to manage patient ECGs (included with 54202, 54205, optional for 54200-1, 54204)

Through this App, ECG acquisitions can be received in SCP format on PC (via USB) and printed. Patient data and automatic interpretations, provided by ECG, can be modified, including test results. The operator can also customize rhythm strips layout with specific commands (speed, gain, filter etc.).

ECG EasyApp



54212 + 54200

GIMA code	CARDIOLINE ACCESSORIES
54210	Cardioline ECG cable 12 leads - spare
54211	Battery for 54200-5 - spare
54212	Carrying bag ready for use for 54200-2
33052	Thermal paper 100 mm x 20 m (100 L) - box of 10
33055	Thermal paper 210x295 mm (200 L) - box of 180 sheets

