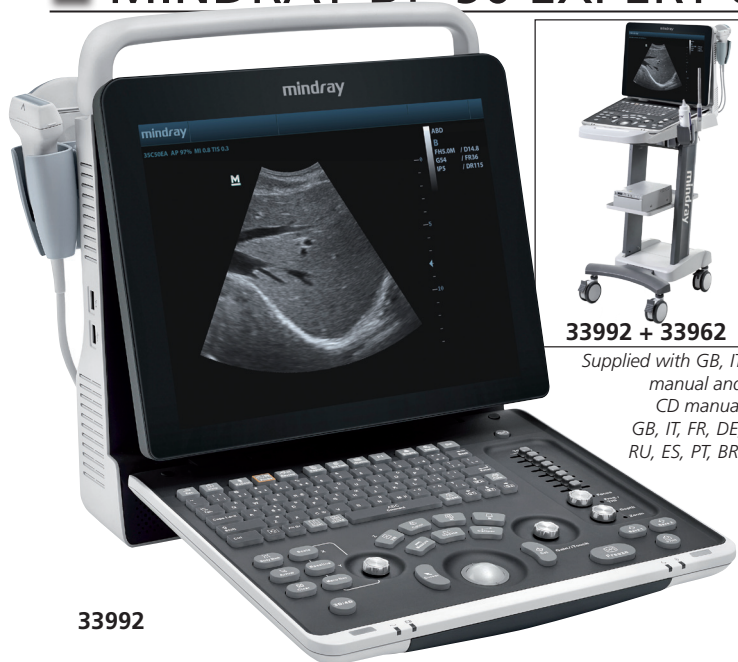


MINDRAY DP-50 EXPERT ULTRASOUND DIAGNOSTIC SYSTEM



33992

33992 + 33962

Supplied with GB, IT
manual and
CD manual
GB, IT, FR, DE,
RU, ES, PT, BR.

• **33992 MINDRAY DP-50 EXPERT PORTABLE ULTRASOUND** with 15" high resolution LCD monitor, 2 probe connectors, 500GB hard disk, 4 USB ports, multiple software package, without probes.

Imaging mode: B, B/B, 4B, B/M, M

Image processing technology:

- Phase Shift Harmonic Imaging
- Tissue Harmonic Imaging
- iBeam™ Spatial Compound Imaging
- iClear™ Adaptive Speckle Suppression Imaging
- iTouch™ Auto Optimization
- Trapezoid imaging
- iZoom™ Automatically expand the image to full screen
- Slant scanning for linear probes (2D Steer)

Wideband multifrequency probes: continuously adjustable 2-14 MHz

Intelligent Workflow/Storage/Review:

- iStation™ Intelligent patient data management system
- 500 GB integrated hard disk for storage
- 4 USB ports
- Cine memory capacity (Max.) B mode: 10566 frames
- M mode: 66.3 s

PW (Pulse Wave) and DICOM included
MDR certified.

TECHNICAL SPECIFICATIONS

Display:	15" LCD
Display language:	GB, FR, IT, ES, PT, RU, PL, CZ, TR, FI, DK, NO, SE, DE
Power:	AC 100-240 V - 50/60 Hz
	rechargeable lithium-ion battery - on request
Size and weight:	DP-50 Expert 14.7x36.1x35.8 cm - 8.1 kg

MINDRAY Z50 COLOUR DIAGNOSTIC ULTRASOUND SYSTEM

• **33881 MINDRAY Z50 COLOUR PORTABLE ULTRASOUND** with 15" high resolution LCD monitor, 2 probe connectors, 500GB hard disk, 4 USB ports, multiple software package, without probes.

A colour doppler system that offers a rare combination of high performance and low cost. Superior image quality, affordability, versatility and mobility in a unique portable Doppler system.

Versatility

- scanning modes: B, Colour, PW, Power, M, FreeXros M
- image display modes: B, 2B, 4B, B/C, B/M, B/PW, Triplex PW
- applications: ABD/OB/GYN/CAR/SML/URO/VAS/ORTH/EM/NERVE
- transducer variety: Convex, Linear, Micro-convex, Endocavity
- extended scanning angle with ExFov function
- high frequency linear probe for superficial scanning

Productivity

- iTouch: quick image optimization with one-click
- iZoom: instant full screen zoom with one-click
- iStation: patient database review and analysis platform
- iStorage: direct data transfer to PC
- Clipboard: easy play, preview and sharing of cineloop
- Multiple image formats: BMP, JPG, DCM, AVI, DCM, CIN

Mobility

- compact and streamlined design weighing 8.1kg
- 15" LCD monitor with 60 degree tilt function

- dual universal transducer connectors
- two level backlit keyboard for varying requirements
- can be packed in a convenient hand-carried bag for easy transportation
- 1.5 h uninterrupted scanning with optional rechargeable battery

PW (Pulse Wave) included.
CD manual:
GB, FR,
IT, ES, PT,
DE, RU.
MDR
certified.

CD manual:

GB, FR,

IT, ES, PT,

DE, RU.

MDR

certified.

TECHNICAL SPECIFICATIONS

Display:	15" LCD high resolution 1024x768
Software display + keyboard input:	GB, FR, IT, ES, PT, RU, PL, CZ, DE
Keyboard input:	TR, FI, DK, NO, SE
Power:	AC 100-240 V - 50/60 Hz; rechargeable lithium-ion battery - on request
Size - weight:	14.7x36.1x35.8 cm - 8.1 kg



33881

PROBES AND ACCESSORIES FOR DP-50, DP-50 EXPERT, Z5, Z50

GIMA code	ACCESSORIES for DP-50, DP-50 Expert, Z5, Z50													
33875	Needle guided brackets for Linear probe (34004)													
33876	Needle guided brackets for Micro-Convex probe (33984)													
33975	Lithium-ion rechargeable battery for DP-50, DP-50 Expert, Z5, Z50													
33987	Carrying bag for DP-50, DP-50 Expert, Z5, Z50													
33988	UMT-150 mobile trolley for DP-50, Z5													
33962	UMT-150 mobile trolley for DP-50 Expert, Z50													
33968	SONY PRINTER UP-X898 MD FOR DP-50, DP-50 Expert													
33993	SONY COLOUR PRINTER UP-25 MD for Z5, Z50													
33961	SONY COLOUR PRINTER UP-D25 MD for Z5, Z50													
PROBES DP-50, DP-50 expert, Z5, Z50			FREQUENCY (MHz)		● Main application									
GIMA code	Mindray code	Scanning method	Main freq.	Probe band width	ABDOMINAL	OB / GYN	UROLOGY	SMALL PARTS	CARDIOLOGY	MSK	VASCULAR	PEDIATRIC	PROSTATE	ORTHOPEDIC
33982	35C50EA	Convex	3.5	2.0 - 5.0	●	●	●							
33983**	75L53EA	Linear	7.5	5.0 - 10.0	●	●		●		●	●	●		
33978*	65C15EA	Micro-convex	6.5	5.0 - 8.5	●				●			●		
33984*	65EC10EA	Micro-convex	6.5	5.0 - 8.5		●							●	
33990*	10L24EA	Linear array	10.0	8.0 - 14		●		●		●	●			
34004	75L38EA	Linear	7.5	5.0 - 10.0				●		●	●			

*Not for DP-50PT

**Not compatible for Z5, Z50



33987

Size: 39.5 x 24.5 x 46 cm

Trolley size:
44,5x53,5x
h 81 or 87 cm

Height selectable
(2 levels) when
installing



33988