

CHISON ECO5 AND ECO6 COLOUR DIGITAL ULTRASOUND SYSTEMS



ECO5
33865

- 33865 CHISON ECO5 Colour Doppler 12" high resolution LED monitor, 8G high speed memory, 3 USB ports, 2 probe connectors, EASYVIEW™ archive system, without probe
- 33858 CHISON ECO6 Colour Doppler 12" high resolution LED monitor, 8G high speed memory, 3 USB ports, 2 probe connectors, EASYVIEW™ archive system, without probe, with optional cardiac package, Super Needle, Auto IMT.

Imaging modes:

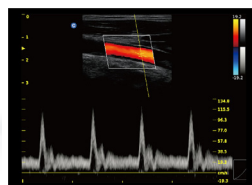
B, B/B, 4B, B/M, M, CFM, PW (ECO 5 and ECO6)
PD, DPD, B/BC, Triplex (only ECO6)

Imaging processing:

- MCI (Multiple Compound Imaging)
- i-image intelligent image optimization
- THI (Tissue Harmonic Imaging)
- SRA (Speckle Reduction Algorithm)
- full digital beam-former
- AIO (Automatic Image Optimization)
- trapezoidal
- Chroma
- full screen display mode
- automatic PW trace

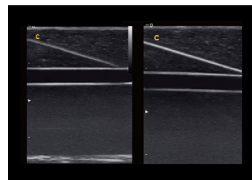
Other specifications as ECO3EXP.

ECO6 EXCLUSIVE FEATURES



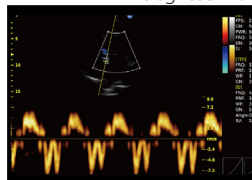
Triplex - standard Triplex combines B, colour, with PW to help the user make diagnosis more convenient and accurate, improving efficiency.

Auto IMT Function - optional (code 33861)
Automatically traces the intima and measures its thickness faster, more easily and more accurately.



Super Needle - optional (code 33860)
With Super Needle, clinicians can see needle inside tissue more clearly during medical procedures. Needle angle up to $\pm 30^\circ$.

Continuous Wave (CW) Doppler - optional (code 33859)
Detect blood flow with high velocity and help doctors diagnose with more clinical information.



Tissue Doppler Imaging (TDI) - optional (code 33859)
New echocardiography technique that directly measures myocardial velocity. Systolic TD measurements assess left and right ventricular myocardial contractile function. Diastolic TD values reflect myocardial relaxation.

• 33859 CARDIAC PACKAGE: PROBE + CW + TDI - optional

• 33860 SUPER NEEDLE - optional • 33861 AUTO IMT - optional

ACCESSORIES AND PROBE see page 341

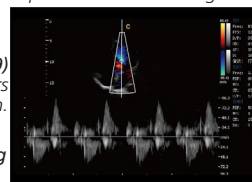
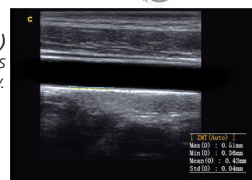
	LANGUAGE - switchable by user									
	GB	IT	FR	ES	PT	DE	PL	CZ	TR	RU
Software	•	•	•	•	•	•	•	•	•	•
User manual	•	•								•

TECHNICAL SPECIFICATIONS

Size - weight: 33.5x15.5x35 cm (13.2"x6.1"x13.8") - 6.5 kg
Display: 12" LED, high-resolution colour 1024x768
Power: AC 100-240 V, 50-60 Hz; Rechargeable Li-ion battery 14.8 V 4400 mAh



ECO6
33858



CHISON QBit5 ECOCOLOURDOPPLER

- 33877 QBit5 ECOCOLOURDOPPLER - 15" flat high resolution LED monitor. Supplied with 2 probe connectors and 1 parking probe connector, trolley, keyboard, large image storage: 32 GB HardDisk, 6 USB ports, VGA format, without probes.

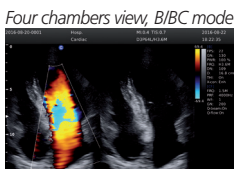
Affordable and reliable colour doppler with advanced technologies: compound imaging, quad beam former imaging, Q-image, Q-flow, X-contrast providing superb images. The Streamlined workflow and ergonomic outlook design improve work efficiency.

Imaging modes:

- Power Doppler / Directional PD
- PW mode
- duplex, triplex
- chroma B/M/PW/CW
- trapezoidal on linear probe
- B/BC
- CFM
- full screen
- B, 2B, 4B, B/M, M

Image processing technology:

- Speckle Reduction Algorithm (SRA)
- direct print to PC or video printer



GIMA code for QBit5	PROBES		FREQUENCY (MHz)		PROBE MODEL	Main application					
	Scanning Method	Main freq.	Probe band width QBit5			ABDOMINAL	OB/GYN	UROLOGY	SMALL PARTS	CARDIOLOGY	PEDIATRICS
33953	CONVEX	3.5	2-6.8			•	•	•			
33878	LINEAR	7.5	4-15						•		•
33956	MICRO-CONVEX (TRANSVAGINAL)	6.0	4-12			•					
33964	MICRO CONVEX (BASIC CARDIAC)	3.0	2-6.8							•	•
33879	CARDIAC (PHASED ARRAY)	2.5	1.5-5.3							•	•
33958	PEDIATRIC	5.0	4-10.7								•

- Automatic Image Optimization (AIO)
- Fusion Harmonic Imaging (FHI)

Special radiology function:

2D steer and super needle (optional)

Phased array probe and package

Phased array probe functions include CW, TDI, ECG, Colour M and complete calculation packages including PISA/Dp/Dt

• 33993 SONY UP - 25 MD COLOUR PRINTER A6 for i3, i8, QBit5

• 33961 SONY UP-D25 MD COLOUR PRINTER for i3, i8, QBit5



15" LED monitor:
rotatable -90° +90°
foldable 0-90°

Size: 747x517x1283 mm
Net weight: 50 kg



33877

Hepatic vein, C mode