

SONOEYE: 4 DIGITAL COLOUR DOPPLER PALM ULTRASOUND SYSTEMS

SonoEye hand-held ultrasounds help healthcare professionals to provide high quality patient care in any location. System works connected to smartphones or tablets. Adaptable design, similar to a pad or mobile phone, increases its portability.

- light: half weight of a phone, small volume
- multiple devices: connection with smartphones or tablets
- waterproof: IPX7, free cleaning and sterilization
- use anywhere: multiple fast solution
- thumb-play: one touch to start and finish the operation, easy to use.

SonoEye is intended for diagnostic ultrasound imaging in B-Mode, M-Mode, Colour Doppler, Power Doppler, Directional Power Doppler, Pulsed Wave and Fusion Harmonic Imaging modes.

Available in 4 different models:
SonoEye P2 Linear Array indicated for Small Organ, Musculoskeletal (MSK), Nerve, Lung, EM, Vascular.

SonoEye P3 Phased Array indicated for Abdominal, Cardiac, Lung, EM.

SonoEye P5 Convex indicated for Abdominal, OB/GYN, Urology, Lung, EM.

SonoEye P6 Micro Convex indicated for Pediatrics and Neonatal Abdominal, Cardiac and Veterinary imaging applications.



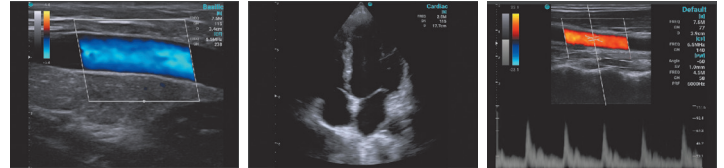
Programmable buttons for customized functions: gain, depth, focus, freeze, save,

SONOEYE IS SUITABLE FOR HUMAN OR VET

93/42/EEC
EN 60601-1
Type BF
continuous operation



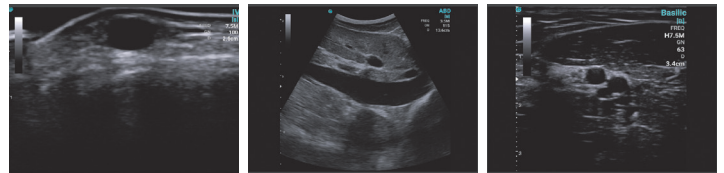
IMAGING MODES



Basilar vein, C Mode

Cardiac, B Mode

Carotid, PW Mode



IV, B Mode

IVC, B Mode

Ulnar Nerve, B Mode

SONOEYE PALM ULTRASOUND SYSTEM

GIMA code	Scanning Method	Frequency (MHz)		VASCULAR	MSK	NERVE	LUNG	ABDOMINAL OB/GYN	UROLOGY	SMALL PARTS	EM*	CARDIAC	VETERINARY
		Main freq.	Frequency range										
33914	P2 Linear	7.5	7.0-12.0	●	●	●	●				●	●	
33915	P3 Phased Array	3.0	2.5-4.0					●	●			●	●
33916	P5 Convex	3.5	3.0-5.0					●	●	●	●		
33917	P6 Micro-Convex	6.5	6.0-10.0					●				●	●

TABLET FOR SONOEYE

33918 Tablet for SonoEye

*EM: Emergency medicine



Sonoeye carrying case



Light
Half weight of a phone,
highly integrated
design, less volume.

App

SonoEye works with SonoEye App for Human or Vet, free to download on www.chisonsonoeye.com

Human and Vet use

All SonoEye probes can be used on human or animals based on selected App.

Supplied with carrying case and manual (GB, IT).

CHISON
Value Beyond Imaging

COMPATIBILITY

Model
Smart Phone: HUAWEI P30 Pro, HUAWEI iV30, Xiaomi RedmiNote 8Pro (continuously updated)
Smart Pad: HUAWEI MatePad (BAH3-W59), HUAWEI MatePad Pro (MRX-W09), TECLAST T30, TECLAST T30 Pro, TECLAST M40 Air, Samsung Galaxy Tab S6 (SM-T860), Honor ViewPad V6, Honor ViewPad V7, Xiaomi Pad 5, Xiaomi Pad 5 Pro 12.4" (continuously updated)

TECHNICAL SPECIFICATIONS

Model	33914	33915	33916	33917
Probe Type:	Linear	Phased Array	Convex	Micro-Convex
Central frequency:	7.5 MHz	3.0 MHz	3.5 MHz	6.5MHz
Frequency Range:	7.0-12.0 MHz	2.5-4.0 MHz	3.0-5.0 MHz	4.0-10.0 MHz
Scanning Depth:	1.0-14.8 cm	4.9-22.7 cm	3.8-37.3 cm	4.4-20.2 cm
Footprint*:	40 mm (43.5x9 mm)	18x12.5 mm	R50 (56.98x12.5 mm)	51.17x11 mm
FOV:	NA	90 degree	59 degree	93 degree
Doppler:	Support Mode: B, M Mode, Colour Doppler, Power Doppler, DPD, PW Mode			
Image Optimal:	A/O, dynamic range, 2D map, chroma, persistence, line density, compound			
Dimensions mm:	64x170x24	64x173x24	64x172x24	64x174x24
Weight without cable:	130 g	124 g	143 g	138 g

*Contact area of the probe to patient

Multiple device
Sonoeye provides a flexible
connection with smart phone
or pad.



Waterproof
Hand-held ultrasound gives you the power to sterilize and clean freely.