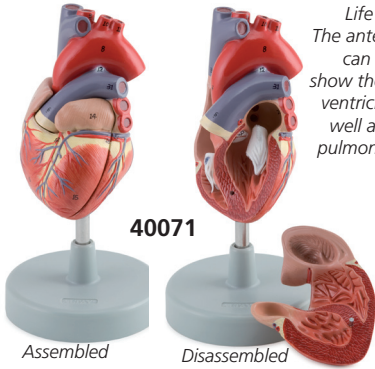


HEART AND CIRCULATORY SYSTEM



40071

Assembled

Disassembled

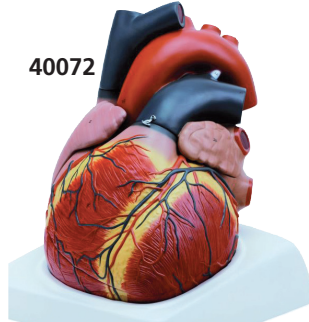
Enlarged 2000 times, this model shows the various types of blood cells, including red blood cells, white blood cells (lymphocytes, monocytes, neutrophils, eosinophils and basophils) and blood platelets.



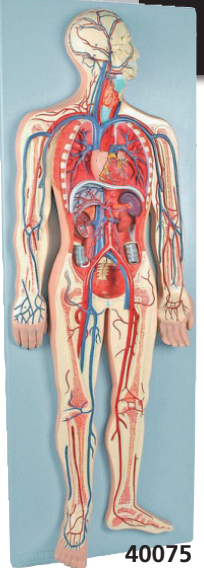
40077

Life size in 2 parts. The anterior heart wall can be removed to show the left and right ventricles and atria as well as the tricuspid, pulmonary, mitral and aortic valves.

40072



A general view of the human circulation. It includes the heart (2 parts), lungs, liver, spleen, kidneys and relevant connections with the pulmonary and systemic circulatory pathways.



40075

GIMA code	HEART AND CIRCULATORY SYSTEM	Size cm	Weight kg	Parts	Magnif.
40071	HEART - mounted on base	11x7x10	0.23	2	1X
40072	GIANT HEART - mounted on base	24x25x28	3.5	4	3X
40077	BLOOD CELLS - mounted on board	58x38x7	1.0	1	2000X
40075	VASCULAR SYSTEM - mounted on board	90x32x11	2.3	2	0.5X

URINARY SYSTEM: MALE BLADDER, KIDNEY

• 40090 MALE URINARY BLADDER WITH PROSTATE

Size: 27x20x15 cm - 1,2 kg - 2 parts - 3X

This model, enlarged 3 times, shows the male urinary bladder with the prostate gland surrounding the urethra. The model is dissected medially to expose both internal and external structures of the bladder and prostate, including the ureteric and urethral orifices, ductus deferens, seminal gland, ejaculatory duct.

40090

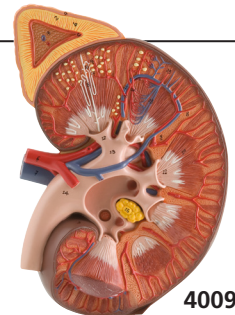


• 40094 KIDNEY WITH ADRENAL GLAND+RENAL CORPUSCLE

Size: 40x15x8 cm - 1,2 kg - 1 part - 3X

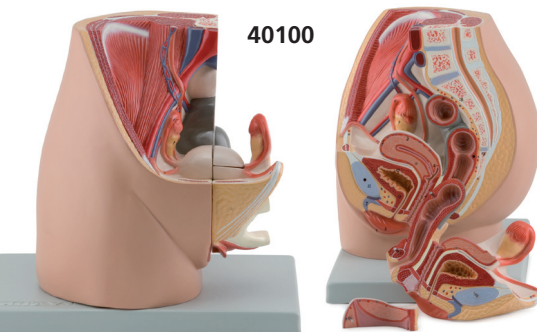
This model shows a frontal section of the human kidney enlarged 3 times. The kidney is shown with the renal capsule. Additional structures include: the cortex, medulla, pyramids with papillae, partially dissected renal pelvis, renal calices, ureter, blood vessels, suprarenal gland with cortex and medulla. A schematic representation of the renal corpuscle with the system of collecting tubules is included.

40094



PELVIS - FEMALE AND MALE

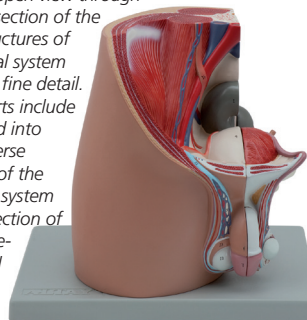
40100



This life size model, composed of 3 parts, shows an open dissection through the median sagittal section of the pelvis. Internal structures of the female urogenital system are portrayed in great detail. Removable parts include half of the female reproductive system with the uterus opened to reveal medial and transverse sectional views.

40105

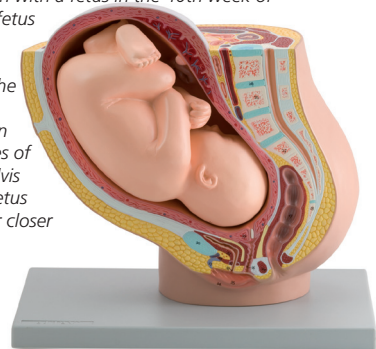
This life size model, composed of 4 parts, presents an open view through a median sagittal section of the pelvis. Internal structures of the male urogenital system are represented in fine detail. The removable parts include a half penis divided into medial and transverse sections, and half of the male reproductive system with an open dissection of a testis showing details of the internal structure.



GIMA code	PELVIS size cm	Sex	Kg	Parts	Mag
40100	30x20x27	fem	1.7	3	1X
40105	30x20x27	male	1.7	4	1X

PREGNANCY PELVIS

This life size model depicts the female human pelvis in median section with a fetus in the 40th week of pregnancy. The fetus is in the normal position prior to birth, showing the anatomical relationship between various structures of the maternal pelvis and the fetus. Fetus is detachable for closer examination.



• 40110 PREGNANCY PELVIS WITH MATURE FETUS

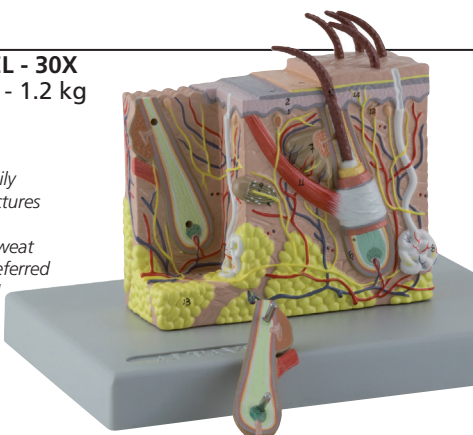
Size: 40x26x34 cm - 3.3 kg - 2 part - 1X

SKIN

• 40061 SKIN MODEL - 30X Size: 20x15x15.5 cm - 1.2 kg Mounted on base

All the skin layers can be easily identified and the main structures such as hair follicle, sensitive corpuscles, sebaceous and sweat glands, are numbered and referred on the accompanying k-card

40061



• 40060 SKIN MODEL - 70X Size: 25x18x28 cm - 1.5 kg 2 parts - 70X Mounted on base

Anatomical structures are shown in details including the hair follicles, sebaceous glands, sweat glands, erector muscles, Pacinian corpuscles, nerves and blood vessels. The different layers of the skin are clearly defined. A portion of a hair shaft can be removed to show internal details.

40060

