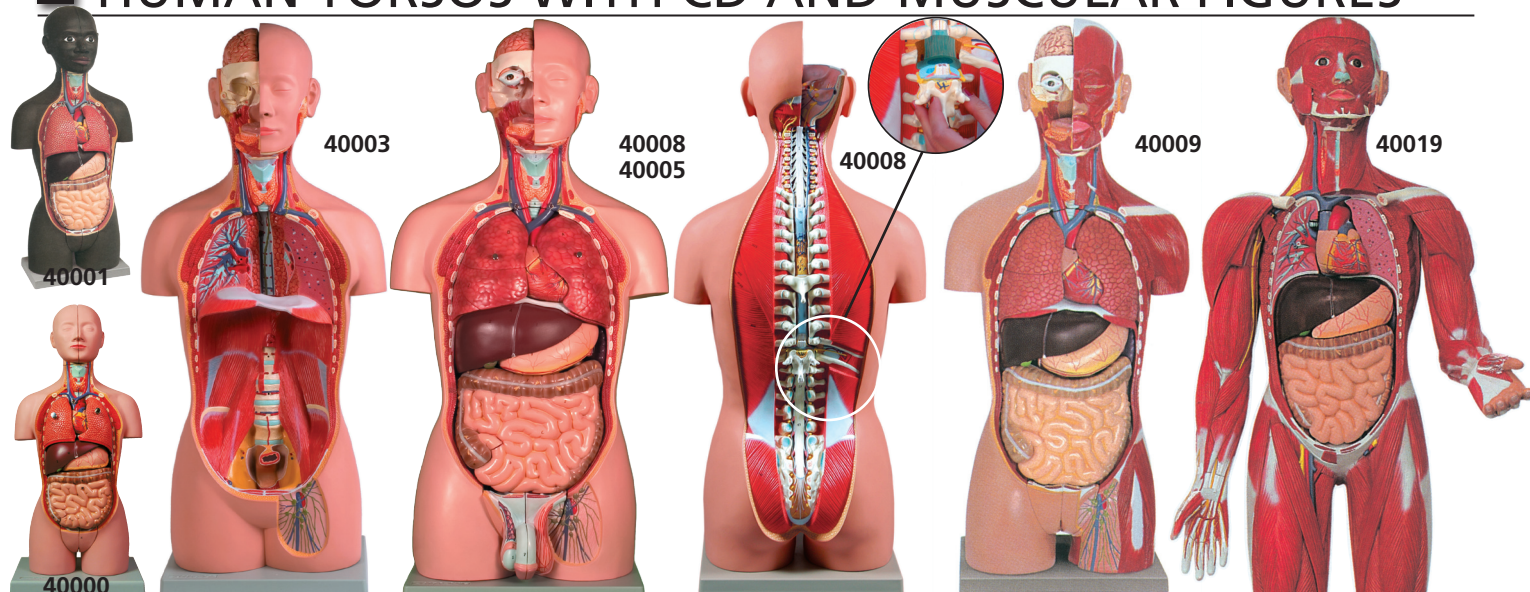


HUMAN TORSOS WITH CD AND MUSCULAR FIGURES



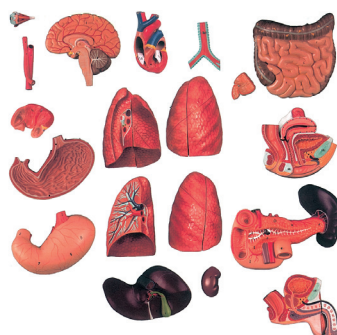
GIMA code	HUMAN TORSOS *SUPPLIED WITH CD ROM GUIDE	Size	Weight	Parts
40000	MINI TORSO	20x15x45 cm	2.1 kg	16
40001	MINI TORSO - african	20x15x45 cm	2.1 kg	16
40003	TORSO UNI SEX *	23x33x90 cm	9 kg	16
40005	TORSO DUAL SEX*	23x33x90 cm	9.3 kg	25
40008	TORSO DUAL SEX OPENBACK*	23x33x90 cm	9.3 kg	27
40009	MUSCULAR TORSO DUAL SEX OPENBACK*	23x33x90 cm	10 kg	28
40019	MUSCULAR FIGURE	30x33x87 cm	5.3 kg	30



This CD-ROM Guide greatly extends the educational value of the anatomical torsos by identifying hundreds of structures that are not included on the printed key.

High-resolution digital images of torso components show the finest anatomical details of all body systems from various angles.

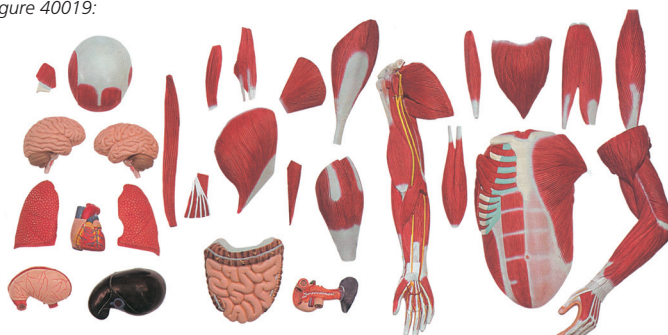
Some of the detachable parts of human torsos (40005-8-9):



Removable structures, of codes 40005-8-9, include the following:

- eye with optic nerve and extraocular muscles
- half of the brain - trachea - descending thoracic aorta and esophagus - right and left lungs (two parts each) - liver with gallbladder - half of one kidney - two part heart - stomach dissected in two parts (not for 40005) - pancreas, duodenum and spleen - small and large intestines - male and female urogenital systems (4 parts each), (on 40009 female system is in 3 parts and provided of detachable fetus) - thoracic vertebra (T12) with spinal cord (code 40008 and 40009 only).

Detachable parts of human muscular figure 40019:



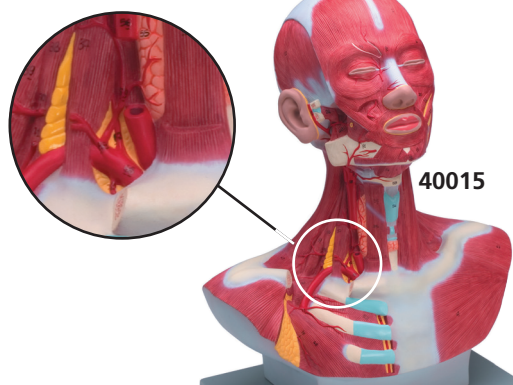
HEAD MUSCULATURE

• 40015 HEAD/NECK MUSCULATURE

Size: 37x23x46 cm

- 3.1 kg - 1 part - life size

Superficial and deep musculature are well represented as are the pathways of the subclavian and carotid arteries



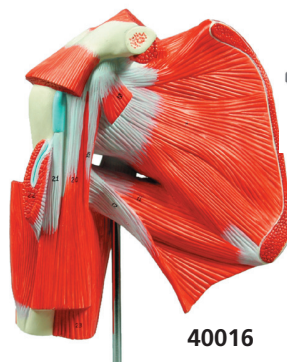
MUSCLES: SHOULDER, ARM, LEG

• 40016 SHOULDER MUSCLE

Size: 23x19x11 cm - 435 g

1 part - 1X

Mounted on a base with stand



This model illustrates in great details the muscles, ligaments and bones of the shoulder.

Through different muscles section it is possible to observe the deep musculature to the bone.

• 40017 ARM MUSCLE

Size: 74x20x12 cm - 1.9 kg

- 7 parts



This 7-part life size model shows, in great detail, the anatomical structure of the arm, complete with superficial and deeper muscles, vascular structures, nerves and ligaments. The hand and the shoulder are also well represented.

The following parts are removable:

- deltoid muscle
- biceps muscle
- triceps muscle
- long palmar muscle with radial flexor muscle of wrist
- brachioradial muscle
- radial extensor muscle of wrist
- palmar aponeurosis

• 40018 LEG MUSCLE

Size: 110x19x14.5 cm - 5.1 kg

13 parts

Mounted on a base with stand

This 13-part model shows, in great detail, the anatomical structure of the leg, complete with superficial and deeper muscles, vascular structures, nerves and ligaments.

The following parts are removable:

- sartorius
- long head of biceps
- gluteus maximus
- soleus
- gastrocnemius
- gluteus medius
- gracilis
- semitendinosus and semimembranosus
- rectus femoris
- extensor digitorum longus
- sole of foot
- tensor fasciae latae

