

# VALUE HUMAN ANATOMY MODELS

## HUMAN SKULLS - 3 parts

A detailed reproduction of a life size human skull with all structural details. The mandible is articulated, the skullcap is removable to show internal details. All of the joints, sutures, fissures, foramina and processes are portrayed with utmost accuracy.



• 40155 HUMAN SKULL 1X - 3 parts - 21.5x12x16.5 cm



• 40156 HUMAN SKULL 1X NUMERATED - 3 parts



• 40157 HUMAN SKULL 1X COLOURED - 3 parts



• 40199 ORAL HYGIENE MODEL - 3X

Giant toothbrush is included

Fully flexible life size vertebral columns consisting of the occipital plate, cervical, thoracic and lumbar vertebrae, sacrum, coccyx, complete pelvis with symphysis, removable femur heads



• 40127 FLEXIBLE VERTEBRAL COLUMN with femur heads

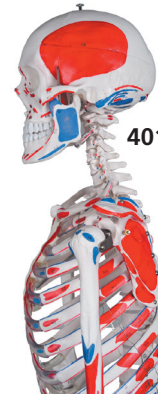


• 40144 KNEE JOINT

A functional model of knee joint with lateral ligaments, meniscus and patellar ligament.



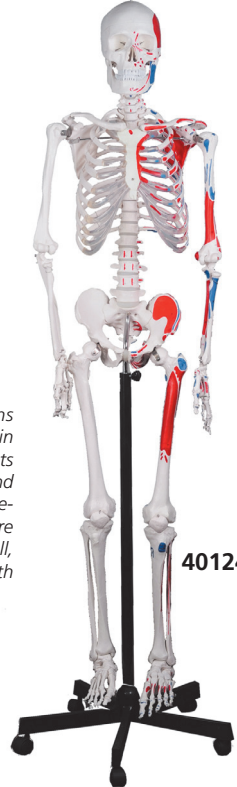
40119



40124

Life size human skeletons show all the skeleton parts in high detail. The main joints are articulated; the upper and lower limbs can be easily removed. The following parts are detachable: Calvarium, Skull, Jaw, Arms, Legs. Supplied with 5-caster roller stand.

Height: 180 cm  
Weight: approx 10 kg



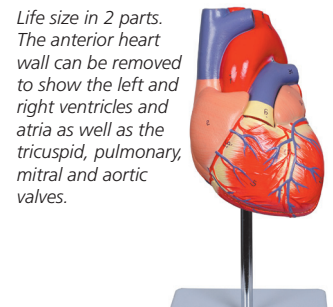
40124

• 40119 HUMAN SKELETON

• 40124 HUMAN MUSCULAR SKELETON

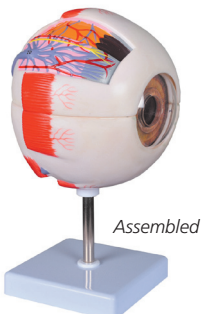


• 40139 SHOULDER JOINT



• 40069 HEART 1X - 2 parts

Life size in 2 parts. The anterior heart wall can be removed to show the left and right ventricles and atria as well as the tricuspid, pulmonary, mitral and aortic valves.



Assembled

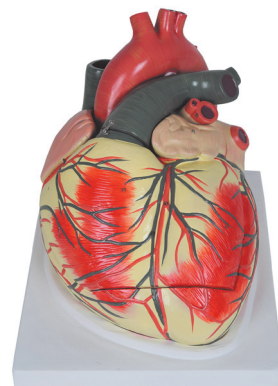
• 40028 EYE 6X - 6 parts



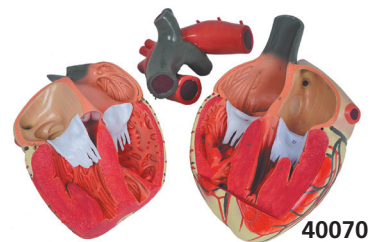
40028

Disassembled

Cornea, iris, lens and vitreous body can be removed.

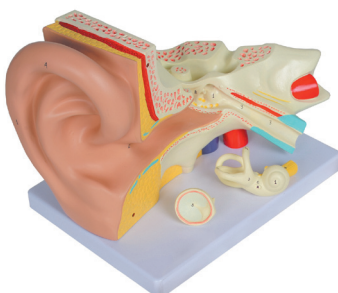


• 40070 HEART 3X - 3 parts



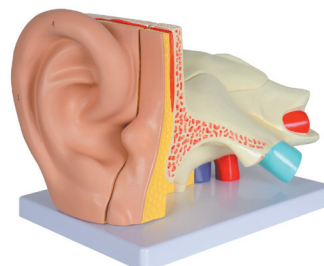
40070

Shows internal structures including the cardiac valves and the comparative morphology of the right and left ventricles.

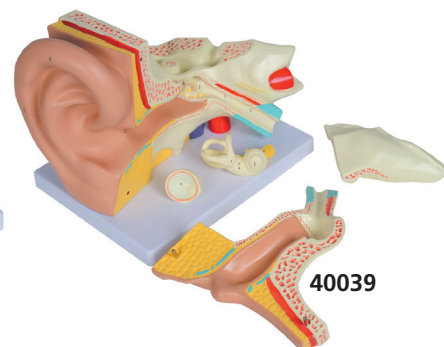


• 40038 EAR 3X - 3 parts

These models show the external, middle and inner ear. The eardrum with malleus, incus and stapes are removable. Also cochlea and labyrinth with vestibular and cochlear nerves and 2 bones sections (40039 only) that define the middle and inner ear are removable.  
Size: 32x20x21 cm  
Packaging size: 34.5x22x23.5 cm  
Packaging weight: 1.7 kg



• 40039 EAR 3X - 5 parts



40039