

INFLUENZA A/B TESTS

• 24537 INFLUENZA A/B TESTS - box of 30 tests (3 packs of 10 pcs.)

Influenza A/B is a rapid in vitro test to detect type A and B influenza antigens (nucleoprotein) extracted from the nasal specimens.

The test is designed to detect nucleoproteins of Flu-A core subtypes, independent of H and N surface proteins (including H1N1, H3N2, H5N1, H5N3, H7N3, H9N2).

A sterile nasal swab allows an easy collection of specimen. Results in 10-15 minutes.

Includes rapid influenza A/B test panel, swab, test tube, extraction buffer.

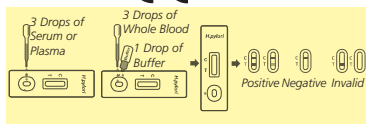


PROFESSIONAL

24537



24526



HELICOBACTER PYLORI TEST FOR ULCER SCREENING

• 24526 HELICOBACTER PYLORI TEST - box of 40 tests

Rapid test for qualitative detection of Helicobacter pylori antibodies in human whole blood, serum or plasma. Easy to perform and interpret. Quick results in 10 minutes. It includes 40 test cassettes, 40 droppers, 1 buffer.

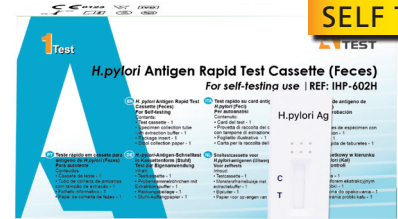
Multilingual box and manual: GB, FR, IT, ES, DE, HU. Relative sensitivity: 96.8%; relative specificity: 93.0% and accuracy: 94.6%.

• 24524 HELICOBACTER PYLORI SELF TEST - box of 1 test

Rapid test for qualitative detection of Helicobacter Pylori antigens in human feces specimens.

It provides results in 10 minutes.

Packed in single box which includes test cassette, specimen collection tube with extraction buffer, stool collection paper and manual in GB, IT, ES, PT, DE, NL, PL. Relative sensitivity: 97.6%; relative specificity: 97.9% and accuracy: 97.8%.



SELF TEST



0123

24524

PROSTATE SCREENING - PSA ONE-STEP TEST

• 24533 PSA TEST - box of 25 tests - for professional use

The PSA is a rapid test cassette for semi-quantitative detection of prostate specific antigen, that utilizes a combination of colloidal gold conjugate and anti-PSA antibodies.

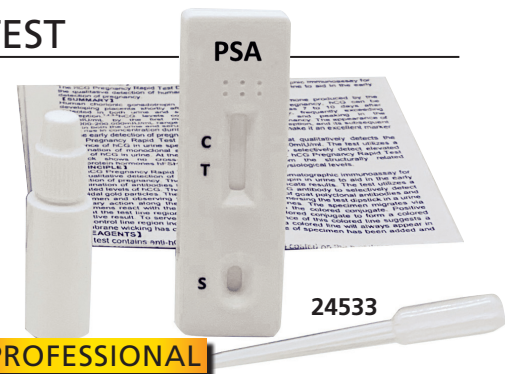
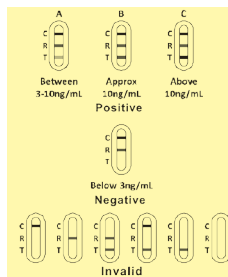
Provides accurate results in 5 minutes.

- sensitivity, specificity and accuracy 99%
- detects PSA in whole blood, serum or plasma
- cut-off from 3 ng/ml.

Tests are supplied with droppers, buffer, multilingual instructions (GB, FR, IT, ES).



0123



PSA

24533

PROFESSIONAL

CARDIAC MARKER

• 24525 CARDIAC MARKER

3 parameters: CK-MB, Troponin, Myoglobin - box of 20 tests

It allows to check cardiac status and stroke events in just 15 minutes. Ideal to keep under control patients affected by cardiopathies or after heart attack or surgery. Acute Myocardial Infarction-MI (Heart Attack) is responsible for 1 in 5 deaths in the U.S. After 6 hours of AMI onset, the damage to the cardiac muscle is irreversible and permanent. This illustrates that early and accurate diagnosis of AMI is essential. ECG is the most widely used method of MI diagnosis.

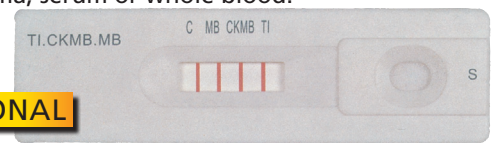
Unfortunately, as many as 25% of AMI patients have a normal ECG. GIMA offers an array tests for Biochemical and Protein markers of MI, such as Creatine Kinase Isoenzyme MB (CK-MB), Myoglobin (MB) and Cardiac Troponin I (cTnI) in combination. It includes 20 droppers, 20 cassettes.

Measurement in plasma, serum or whole blood.

Multilingual manual (GB, FR, IT, ES.) For professional use.



PROFESSIONAL



SEMI-QUANTITATIVE CRP TEST

• 24527 CRP TEST - box of 20 tests

Measurement of CRP in whole blood, plasma or serum has two purposes:

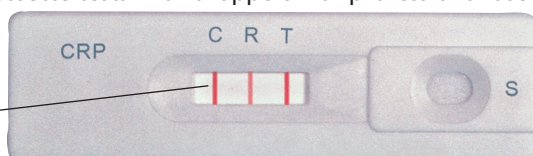
- 1) hs-CRP levels help in assess the risk of cardiovascular and peripheral vascular disease. Higher hs-CRP values have highest risk of cardiovascular disease.
 - 2) CRP levels help identify and keep track of infections and diseases that cause inflammation (lymphoma, lupus, giant cell arteritis, osteomyelitis, rheumatoid arthritis,).
- use fingerstick whole blood or serum/plasma
 - results within 7 minutes
 - room temperature storage
 - built in performance control and reference band

It includes 20 cassette tests with droppers. For professional use.



24527

Strong intensity colour bands



MALARIA RAPID TEST

• 24547 MALARIA RAPID TEST - box of 40 tests

A rapid chromatographic immunoassay test for the qualitative detection of circulating plasmodium falciparum in whole blood.

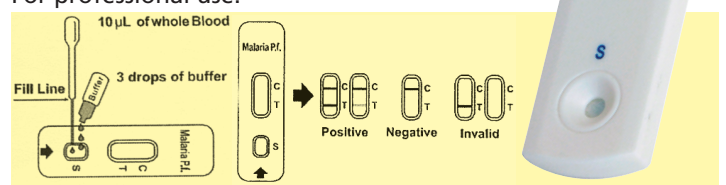
Compared with traditional thick or thin blood smears microscopic analysis, the correlation between the two systems is over 99,0%.

Package includes test devices, buffer, disposable specimen dropper and multilingual manual (GB, FR, IT, ES), lancets are not included.

For professional use.

24547

Malaria P.f.



WARNING: SHORT EXPIRY DATE FOR TESTS. Tests have 24 months expiry at production time. Our stock may vary from 10 to 22 months.