

HANDHELD X-RAY CAMERA



- 32000 REMEX KA6 HANDHELD X-RAY CAMERA with collimator
- 32002 REMEX KA6 X-RAY CAMERA SET: camera (32000) + detector + laptop with software

Portable X-ray camera intended to be used for adults and children by qualified and trained clinicians to produce diagnostic x-ray images of the whole-body through receptors. It provides superior image quality with low radiation exposure, anytime and anywhere. The quick access allows to use it when it's not safe or practical to move a patient from bed and when x-ray image is needed urgently. Integrated wireless connectivity.

Expanded clinical coverage

All parts of human body can be captured, including adult chest, pelvis, abdomen, hands and head. Set up time under 1 minute.

Minimized radiation exposure

Low dose product design and mechanism minimize radiation exposure. Image acquisition under 3 seconds.

X-RAY CAMERA TECHNICAL SPECIFICATIONS

Mode:	continuous operation
Exposure time range:	0.06~2.0 sec
Focal spot:	0.4 mm
Max. symmetrical Radiation Field:	286.7x286.7 mm at SID 1000 mm
Extent of X-ray Beam:	63.1x63.1 mm at SID 220 mm
Tube kV/mA:	40~70 kV / 2~6 mA
Power output:	420 W
Power input:	100-240 VA - 50/60 Hz, 1.5 A
Rechargeable battery:	DC 22.2 V / 1.800 mAh
Size - Weight:	165.3x176x255.6 mm - 2.4 kg
Protection:	Class II, type B



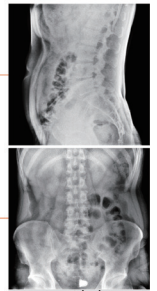
Chest



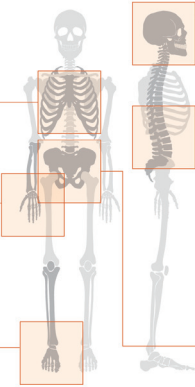
Extremities



Head

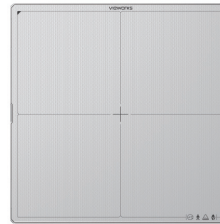


Abdomen



VIVIX
VIEWWORKS

X-ray
detector
included
in 32002



APPLICATION FIELD

Emergency room
Medical checkup
Nursing home
NICU (Neonatal Intensive Care Unit)
ICU (Intensive Care Unit)
Orthopedics
Respiratory Medicine
Operating room
NPIR (Negative Pressure Isolation Room)

Patented adjustable active area collimator

Patented collimator reduces leakage and scatter radiation

Superior quality X-ray image

- 70 kV: improved image penetration to better identify bone
- 6 mA: reduced irradiation time to minimize motion blurring
- 0.4 mm focal spot for high resolution

LED and laser guided Beam function

It helps users to identify accurate exposure area.

• 32004 BATTERY - spare

X-RAY CAMERA STANDARD ACCESSORIES

Collimator	Hand strap	Battery	Manual: GB, IT
Exposure switch	Aluminium box	Adapter	

DETECTOR TECHNICAL SPECIFICATIONS (included in 32002)

Technology:	a-Si TFT
Pixel pitch:	140 µm
Pixel matrix:	3072x3072 pixels
Spatial resolution:	3.5 lp/mm
Image size:	43x43 cm
Acquisition time:	3 seconds
Data interface:	Gigabit Ethernet, IEEE 802.11 n/ac
X-ray generator interface:	DR Trigger mode/AED Mode
X-ray voltage range:	40-150 kVp
Battery:	Lithium Ion 3400mAh x 2, 16 hours operation
Power:	normal max. 24W - charging max. 80W
Size - Weight	46x46x1.5 cm - 3.45 kg
Dust and water protection:	IP67

PORTABLE X-RAY CAMERA - SMALL PARTS AND DENTAL USE



Adjustable cone
up to 175 mm

32010

• 32010 REMEX T-100 PORTABLE DIGITAL X-RAY CAMERA

High quality portable x-ray camera intended to capture diagnostic x-ray images of dental and small parts of the body. It works with intraoral image sensors (32012-3) or any detector on the market, anytime and anywhere.

Suitable for dental, pediatric and veterinary use.

Rechargeable battery allows more than 250 exposures per charge. It produces sharp, clear and high-resolution images.

Low patient dosage and internal shielding to protect the operator. Supplied in box with cone, hand strap, adapter, rechargeable battery and user manual in GB, IT.

• 32015 BATTERY - spare

• 32012 INTRAORAL IMAGE SENSOR - 39x25 mm

• 32013 INTRAORAL IMAGE SENSOR - 42x30 mm

Sensors for acquisition of high-resolution intraoral images in dental field. CSI scintillator and advanced image processing algorithm.

User friendly with ergonomic and durable design. Twain driver and USB connection. Waterproof.



X-RAY CAMERA TECHNICAL SPECIFICATIONS

Mode:	continuous operation
Exposure time range:	0.01~1.3 sec.
Focal spot:	0.4 mm
Tube kV/mA:	70 kV / 2mA
Anode angle:	12.5 degrees
X-ray coverage:	Ø 60 mm at SSD 200 mm
Rechargeable battery:	DC 11.1 V, 1500 mAh
Power input:	100~240 VAC, 50/60 Hz, 1.0 A
Power output:	12.6 Vdc, 1500 mAh
Size - Weight:	165x236.5x153 mm - 1.9 kg
Protection:	Class II, type B

SENSORS TECHNICAL SPECIFICATIONS

	32012	32013
Sensor technology:	CMOS with optical fiber	
Image size:	30x20 mm	34x26 mm
Image resolution:	25 lp/mm	
Pixel size:	20x20 µm	
Pixel pitch:	20	
Total megapixels:	1.5	2.2
Effective pixels:	1.000x1.500	1.300x1.700
Scintillators type:	CSI (TI)	
Interface:	USB 2.0 high speed	
Frame rate:	1.4 fps	1.0 fps

Image quality

Less graininess for cleanest images and best contrast resolution.

Spatial resolution: 19 micron pixel size.

Patient comfort

- ergonomic design with round corners:

6.0 mm radius

- thin sensor plate: 5.4 mm (less than 1/4")

- low profile button: 6.0 mm