

# RoHS TEST REPORT

Report No. : B-R191026307

Date: Nov. 20, 2019

Page 1 of 21

Applicant : Ningbo Gaobo Sports Co., Ltd  
Address : No.1, Xiajin, Dali, Shenzhen Town, Ninghai Country,  
Ningbo City 315614, China.  
Client No : 05748218  
Manufacturer : Ningbo Gaobo Sports Co., Ltd  
Address : No.1, Xiajin, Dali, Shenzhen Town, Ninghai Country,  
Ningbo City 315614, China.



## Report on the submitted sample said to be

Sample Name : Walking Cane

Model No : GB-801, GB-802, GB-803, GB-804, GB-805, GB-806  
GB-8020, GB-812, GB-819, GB-830, GB-831, GB-8060  
GB-823, GB-832

Sample model : GB-801

Sample Received Date : Oct. 25, 2019

Complete Date : Nov. 20, 2019

Test Requested : As specified by client, to determine the Cadmium, Lead, Mercury, Hexavalent Chromium, PBBs / PBDEs, Bis-(2-ethylhexyl) Phthalate (DEHP), Diisobutyl phthalate(DIBP), Dibutyl Phthalate (DBP) & Benzylbutyl Phthalate (BBP) content in the submitted sample.

Test Result(s) : Conform to RoHS Directive 2011/65/EU Annex II amending Annex (EU)2015/863 and amending Annex (EU)2017/2102.



Company No. 07113834

\*\*\*\*\*FOR FURTHER DETAILS, PLEASE REFER TO THE FOLLOWING PAGE(S)\*\*\*\*\*

Written by: Chen Qin  
(Chen Qin)

Inspected by: Austin Zhong  
(Austin Zhong)

Approved by: Martin Wang  
(Martin Wang)



This report is considered invalidated without the Special Seal for Inspection of the Beide (Shenzhen) Product Service Limited, This report shall not be altered, increased or deleted. The results shown in this test report refer only to the sample(s) tested. Without written approval of Beide (Shenzhen) Product Service Limited, this test report shall not be copied except in full and published as advertisement.

# RoHS TEST REPORT

Report No. : B-R191026307

Date: Nov. 20, 2019

Page 2 of 21

Test Method: With reference to IEC 62321-4:2013:A1:2017, IEC 62321-5:2013, IEC 62321-7-2:2017, IEC 62321-6:2015

- (1) Determination of Cadmium by ICP-OES.
- (2) Determination of Lead by ICP-OES.
- (3) Determination of Mercury by ICP-OES.
- (4) Determination of Hexavalent Chromium by Colorimetric Method using UV-Vis.
- (5) Determination of PBBs / PBDEs content by GC-MS.
- (6) Determination of phthalates by GC-MS.

## Test Result(s):

Test item	Unit	Limit	Result			
			LED light (1)	Elastic rope (2)	Conductor (3)	A battery pack (4)
Cadmium (Cd).	mg/kg	100	5.932	N.D.	N.D.	N.D.
Lead (Pb).	mg/kg	1000	164.7861	3.6399	14.9439	4.1148
Mercury (Hg).	mg/kg	1000	N.D.	N.D.	N.D.	N.D.
Hexavalent Chromium (Cr VI).	mg/kg	1000	N.D.	N.D.	N.D.	N.D.
Polybrominated Biphenyls (PBBs)	mg/kg	1000	N.D.	N.D.	N.D.	N.D.
Monobromobiphenyl	mg/kg	/	N.D.	N.D.	N.D.	N.D.
Dibromobiphenyl	mg/kg	/	N.D.	N.D.	N.D.	N.D.
Tribromobiphenyl	mg/kg	/	N.D.	N.D.	N.D.	N.D.
Tetrabromobiphenyl	mg/kg	/	N.D.	N.D.	N.D.	N.D.
Pentabromobiphenyl	mg/kg	/	N.D.	N.D.	N.D.	N.D.
Hexabromobiphenyl	mg/kg	/	N.D.	N.D.	N.D.	N.D.
Heptabromobiphenyl	mg/kg	/	N.D.	N.D.	N.D.	N.D.
Octabromobiphenyl	mg/kg	/	N.D.	N.D.	N.D.	N.D.

**This report is considered invalidated without the Special Seal for Inspection of the Beide (Shenzhen) Product Service Limited, This report shall not be altered, increased or deleted. The results shown in this test report refer only to the sample(s) tested. Without written approval of Beide (Shenzhen) Product Service Limited, this test report shall not be copied except in full and published as advertisement.**

# RoHS TEST REPORT

Report No. : B-R191026307

Date: Nov. 20, 2019

Page 3 of 21

Test item	Unit	Limit	Result			
			LED light (1)	Elastic rope (2)	Conductor (3)	A battery pack (4)
Nonabromobiphenyl	mg/kg	/	N.D.	N.D.	N.D.	N.D.
Decabromobiphenyl	mg/kg	/	N.D.	N.D.	N.D.	N.D.
Polybrominated Diphenyl Ethers (PBDEs)	mg/kg	1000	N.D.	N.D.	N.D.	N.D.
Monobromodiphenyl Ether	mg/kg	/	N.D.	N.D.	N.D.	N.D.
Dibromodiphenyl Ether	mg/kg	/	N.D.	N.D.	N.D.	N.D.
Tribromodiphenyl Ether	mg/kg	/	N.D.	N.D.	N.D.	N.D.
Tetrabromodiphenyl Ether	mg/kg	/	N.D.	N.D.	N.D.	N.D.
Pentabromodiphenyl Ether	mg/kg	/	N.D.	N.D.	N.D.	N.D.
Hexabromodiphenyl Ether	mg/kg	/	N.D.	N.D.	N.D.	N.D.
Heptabromodiphenyl Ether	mg/kg	/	N.D.	N.D.	N.D.	N.D.
Octabromodiphenyl Ether	mg/kg	/	N.D.	N.D.	N.D.	N.D.
Nonabromodiphenyl Ether	mg/kg	/	N.D.	N.D.	N.D.	N.D.
Decabromodiphenyl Ether	mg/kg	/	N.D.	N.D.	N.D.	N.D.
Diisobutyl phthalate(DIBP)	mg/kg	1000	N.D.	N.D.	N.D.	N.D.
Dibutyl Phthalate (DBP)	%(w/w)	1000	N.D.	N.D.	N.D.	N.D.
Benzylbutyl Phthalate (BBP)	%(w/w)	1000	N.D.	N.D.	N.D.	N.D.
Bis-(2-ethylhexyl) Phthalate (DEHP)	%(w/w)	1000	N.D.	N.D.	N.D.	N.D.

This report is considered invalidated without the Special Seal for Inspection of the Beide (Shenzhen) Product Service Limited, This report shall not be altered, increased or deleted. The results shown in this test report refer only to the sample(s) tested. Without written approval of Beide (Shenzhen) Product Service Limited, this test report shall not be copied except in full and published as advertisement.

# RoHS TEST REPORT

Report No. : B-R191026307

Date: Nov. 20, 2019

Page 4 of 21

Test item	Unit	Limit	Result			
			Solder (5)	Metal bar (6)	Sheet metal(7)	Screw(8)
Cadmium (Cd).	mg/kg	100	N.D.	N.D.	N.D.	N.D.
Lead (Pb).	mg/kg	1000	422.3787	N.D.	21.411	N.D.
Mercury (Hg).	mg/kg	1000	N.D.	N.D.	N.D.	N.D.
Hexavalent Chromium (Cr VI).	mg/kg	1000	N.D.	N.D.	N.D.	N.D.
Polybrominated Biphenyls (PBBs)	mg/kg	1000	N.D.	N.D.	N.D.	N.D.
Monobromobiphenyl	mg/kg	/	N.D.	N.D.	N.D.	N.D.
Dibromobiphenyl	mg/kg	/	N.D.	N.D.	N.D.	N.D.
Tribromobiphenyl	mg/kg	/	N.D.	N.D.	N.D.	N.D.
Tetrabromobiphenyl	mg/kg	/	N.D.	N.D.	N.D.	N.D.
Pentabromobiphenyl	mg/kg	/	N.D.	N.D.	N.D.	N.D.
Hexabromobiphenyl	mg/kg	/	N.D.	N.D.	N.D.	N.D.
Heptabromobiphenyl	mg/kg	/	N.D.	N.D.	N.D.	N.D.
Octabromobiphenyl	mg/kg	/	N.D.	N.D.	N.D.	N.D.
Nonabromobiphenyl	mg/kg	/	N.D.	N.D.	N.D.	N.D.
Decabromobiphenyl	mg/kg	/	N.D.	N.D.	N.D.	N.D.
Polybrominated Diphenyl Ethers (PBDEs)	mg/kg	1000	N.D.	N.D.	N.D.	N.D.
Monobromodiphenyl Ether	mg/kg	/	N.D.	N.D.	N.D.	N.D.

**This report is considered invalidated without the Special Seal for Inspection of the Beide (Shenzhen) Product Service Limited, This report shall not be altered, increased or deleted. The results shown in this test report refer only to the sample(s) tested. Without written approval of Beide (Shenzhen) Product Service Limited, this test report shall not be copied except in full and published as advertisement.**

# RoHS TEST REPORT

Report No. : B-R191026307

Date: Nov. 20, 2019

Page 5 of 21

Test item	Unit	Limit	Result			
			Solder (5)	Metal bar (6)	Sheet metal(7)	Screw(8)
Dibromodiphenyl Ether	mg/kg	/	N.D.	N.D.	N.D.	N.D.
Tribromodiphenyl Ether	mg/kg	/	N.D.	N.D.	N.D.	N.D.
Tetrabromodiphenyl Ether	mg/kg	/	N.D.	N.D.	N.D.	N.D.
Pentabromodiphenyl Ether	mg/kg	/	N.D.	N.D.	N.D.	N.D.
Hexabromodiphenyl Ether	mg/kg	/	N.D.	N.D.	N.D.	N.D.
Heptabromodiphenyl Ether	mg/kg	/	N.D.	N.D.	N.D.	N.D.
Octabromodiphenyl Ether	mg/kg	/	N.D.	N.D.	N.D.	N.D.
Nonabromodiphenyl Ether	mg/kg	/	N.D.	N.D.	N.D.	N.D.
Decabromodiphenyl Ether	mg/kg	/	N.D.	N.D.	N.D.	N.D.
Diisobutyl phthalate(DIBP)	mg/kg	1000	N/A	N/A	N/A	N/A
Dibutyl Phthalate (DBP)	%(w/w)	1000	N/A	N/A	N/A	N/A
Benzylbutyl Phthalate (BBP)	%(w/w)	1000	N/A	N/A	N/A	N/A
Bis-(2-ethylhexyl) Phthalate (DEHP)	%(w/w)	1000	N/A	N/A	N/A	N/A

**This report is considered invalidated without the Special Seal for Inspection of the Beide (Shenzhen) Product Service Limited, This report shall not be altered, increased or deleted. The results shown in this test report refer only to the sample(s) tested. Without written approval of Beide (Shenzhen) Product Service Limited, this test report shall not be copied except in full and published as advertisement.**

# RoHS TEST REPORT

Report No. : B-R191026307

Date: Nov. 20, 2019

Page 6 of 21

Test item	Unit	Limit	Result			
			Green PCB(9)	The rope (10)	Plastic parts(11)	Plastic case(12)
Cadmium (Cd).	mg/kg	100	N.D.	N.D.	N.D.	5.1205
Lead (Pb).	mg/kg	1000	43.0022	N.D.	N.D.	5.1323
Mercury (Hg).	mg/kg	1000	N.D.	4.711	2.3269.	N.D.
Hexavalent Chromium (Cr VI).	mg/kg	1000	N.D.	N.D.	N.D.	N.D.
Polybrominated Biphenyls (PBBs)	mg/kg	1000	N.D.	N.D.	N.D.	N.D.
Monobromobiphenyl	mg/kg	/	N.D.	N.D.	N.D.	N.D.
Dibromobiphenyl	mg/kg	/	N.D.	N.D.	N.D.	N.D.
Tribromobiphenyl	mg/kg	/	N.D.	N.D.	N.D.	N.D.
Tetrabromobiphenyl	mg/kg	/	N.D.	N.D.	N.D.	N.D.
Pentabromobiphenyl	mg/kg	/	N.D.	N.D.	N.D.	N.D.
Hexabromobiphenyl	mg/kg	/	N.D.	N.D.	N.D.	N.D.
Heptabromobiphenyl	mg/kg	/	N.D.	N.D.	N.D.	N.D.
Octabromobiphenyl	mg/kg	/	N.D.	N.D.	N.D.	N.D.
Nonabromobiphenyl	mg/kg	/	N.D.	N.D.	N.D.	N.D.
Decabromobiphenyl	mg/kg	/	N.D.	N.D.	N.D.	N.D.
Polybrominated Diphenyl Ethers (PBDEs)	mg/kg	1000	N.D.	N.D.	N.D.	N.D.
Monobromodiphenyl Ether	mg/kg	/	N.D.	N.D.	N.D.	N.D.

**This report is considered invalidated without the Special Seal for Inspection of the Beide (Shenzhen) Product Service Limited, This report shall not be altered, increased or deleted. The results shown in this test report refer only to the sample(s) tested. Without written approval of Beide (Shenzhen) Product Service Limited, this test report shall not be copied except in full and published as advertisement.**

# RoHS TEST REPORT

Report No. : B-R191026307

Date: Nov. 20, 2019

Page 7 of 21

Test item	Unit	Limit	Result			
			Green PCB(9)	The rope (10)	Plastic parts(11)	Plastic case(12)
Dibromodiphenyl Ether	mg/kg	/	N.D.	N.D.	N.D.	N.D.
Tribromodiphenyl Ether	mg/kg	/	N.D.	N.D.	N.D.	N.D.
Tetrabromodiphenyl Ether	mg/kg	/	N.D.	N.D.	N.D.	N.D.
Pentabromodiphenyl Ether	mg/kg	/	N.D.	N.D.	N.D.	N.D.
Hexabromodiphenyl Ether	mg/kg	/	N.D.	N.D.	N.D.	N.D.
Heptabromodiphenyl Ether	mg/kg	/	N.D.	N.D.	N.D.	N.D.
Octabromodiphenyl Ether	mg/kg	/	N.D.	N.D.	N.D.	N.D.
Nonabromodiphenyl Ether	mg/kg	/	N.D.	N.D.	N.D.	N.D.
Decabromodiphenyl Ether	mg/kg	/	N.D.	N.D.	N.D.	N.D.
Diisobutyl phthalate(DIBP)	mg/kg	1000	N.D.	N.D.	N.D.	N.D.
Dibutyl Phthalate (DBP)	%(w/w)	1000	N.D.	N.D.	N.D.	N.D.
Benzylbutyl Phthalate (BBP)	%(w/w)	1000	N.D.	N.D.	N.D.	N.D.
Bis-(2-ethylhexyl) Phthalate (DEHP)	%(w/w)	1000	N.D.	N.D.	N.D.	N.D.

This report is considered invalidated without the Special Seal for Inspection of the Beide (Shenzhen) Product Service Limited, This report shall not be altered, increased or deleted. The results shown in this test report refer only to the sample(s) tested. Without written approval of Beide (Shenzhen) Product Service Limited, this test report shall not be copied except in full and published as advertisement.

# RoHS TEST REPORT

Report No. : B-R191026307

Date: Nov. 20, 2019

Page 8 of 21

Test item	Unit	Limit	Result			
			Plastic nut(13)	Transparent plastic parts(14)	Transparent plastic ring(15)	Rubber MATS(16)
Cadmium (Cd).	mg/kg	100	15.6696	N.D.	N.D.	N.D.
Lead (Pb).	mg/kg	1000	10.9195	N.D.	2.8573	2.0327
Mercury (Hg).	mg/kg	1000	N.D.	N.D.	N.D.	2.3109.
Hexavalent Chromium (Cr VI).	mg/kg	1000	N.D.	N.D.	N.D.	N.D.
Polybrominated Biphenyls (PBBs)	mg/kg	1000	N.D.	N.D.	N.D.	N.D.
Monobromobiphenyl	mg/kg	/	N.D.	N.D.	N.D.	N.D.
Dibromobiphenyl	mg/kg	/	N.D.	N.D.	N.D.	N.D.
Tribromobiphenyl	mg/kg	/	N.D.	N.D.	N.D.	N.D.
Tetrabromobiphenyl	mg/kg	/	N.D.	N.D.	N.D.	N.D.
Pentabromobiphenyl	mg/kg	/	N.D.	N.D.	N.D.	N.D.
Hexabromobiphenyl	mg/kg	/	N.D.	N.D.	N.D.	N.D.
Heptabromobiphenyl	mg/kg	/	N.D.	N.D.	N.D.	N.D.
Octabromobiphenyl	mg/kg	/	N.D.	N.D.	N.D.	N.D.
Nonabromobiphenyl	mg/kg	/	N.D.	N.D.	N.D.	N.D.
Decabromobiphenyl	mg/kg	/	N.D.	N.D.	N.D.	N.D.
Polybrominated Diphenyl Ethers (PBDEs)	mg/kg	1000	N.D.	N.D.	N.D.	N.D.
Monobromodiphenyl Ether	mg/kg	/	N.D.	N.D.	N.D.	N.D.

**This report is considered invalidated without the Special Seal for Inspection of the Beide (Shenzhen) Product Service Limited, This report shall not be altered, increased or deleted. The results shown in this test report refer only to the sample(s) tested. Without written approval of Beide (Shenzhen) Product Service Limited, this test report shall not be copied except in full and published as advertisement.**

# RoHS TEST REPORT

Report No. : B-R191026307

Date: Nov. 20, 2019

Page 9 of 21

Test item	Unit	Limit	Result			
			Plastic nut(13)	Transparent plastic parts(14)	Transparent plastic ring(15)	Rubber MATS(16)
Dibromodiphenyl Ether	mg/kg	/	N.D.	N.D.	N.D.	N.D.
Tribromodiphenyl Ether	mg/kg	/	N.D.	N.D.	N.D.	N.D.
Tetrabromodiphenyl Ether	mg/kg	/	N.D.	N.D.	N.D.	N.D.
Pentabromodiphenyl Ether	mg/kg	/	N.D.	N.D.	N.D.	N.D.
Hexabromodiphenyl Ether	mg/kg	/	N.D.	N.D.	N.D.	N.D.
Heptabromodiphenyl Ether	mg/kg	/	N.D.	N.D.	N.D.	N.D.
Octabromodiphenyl Ether	mg/kg	/	N.D.	N.D.	N.D.	N.D.
Nonabromodiphenyl Ether	mg/kg	/	N.D.	N.D.	N.D.	N.D.
Decabromodiphenyl Ether	mg/kg	/	N.D.	N.D.	N.D.	N.D.
Diisobutyl phthalate(DIBP)	mg/kg	1000	N.D.	N.D.	N.D.	N.D.
Dibutyl Phthalate (DBP)	%(w/w)	1000	N.D.	N.D.	N.D.	N.D.
Benzylbutyl Phthalate (BBP)	%(w/w)	1000	N.D.	N.D.	N.D.	N.D.
Bis-(2-ethylhexyl) Phthalate (DEHP)	%(w/w)	1000	N.D.	N.D.	N.D.	N.D.

**This report is considered invalidated without the Special Seal for Inspection of the Beide (Shenzhen) Product Service Limited, This report shall not be altered, increased or deleted. The results shown in this test report refer only to the sample(s) tested. Without written approval of Beide (Shenzhen) Product Service Limited, this test report shall not be copied except in full and published as advertisement.**

# RoHS TEST REPORT

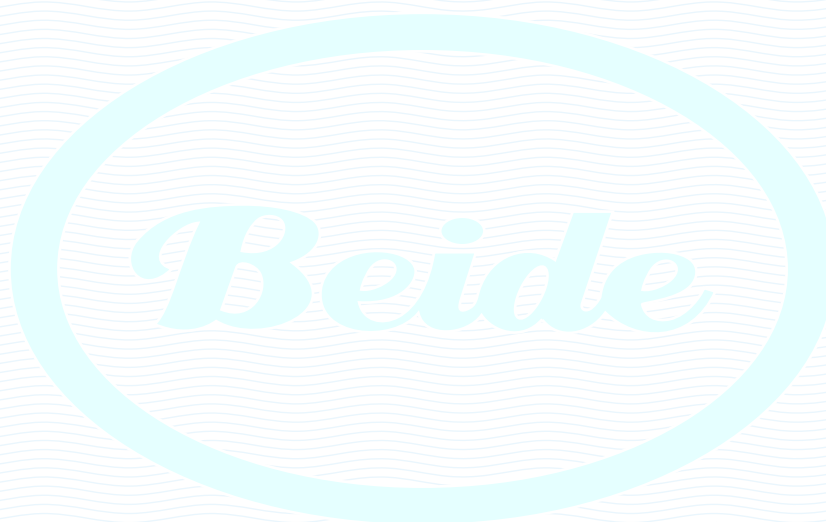
Report No. : B-R191026307

Date: Nov. 20, 2019

Page 10 of 21

**Note:**

1. mg/kg = milligram per kilogram = ppm
2. N.D. = Not Detected (<MDL)
3. N/A = Not Applicable
4. MDL = Method detection limit



**This report is considered invalidated without the Special Seal for Inspection of the Beide (Shenzhen) Product Service Limited, This report shall not be altered, increased or deleted. The results shown in this test report refer only to the sample(s) tested. Without written approval of Beide (Shenzhen) Product Service Limited, this test report shall not be copied except in full and published as advertisement.**

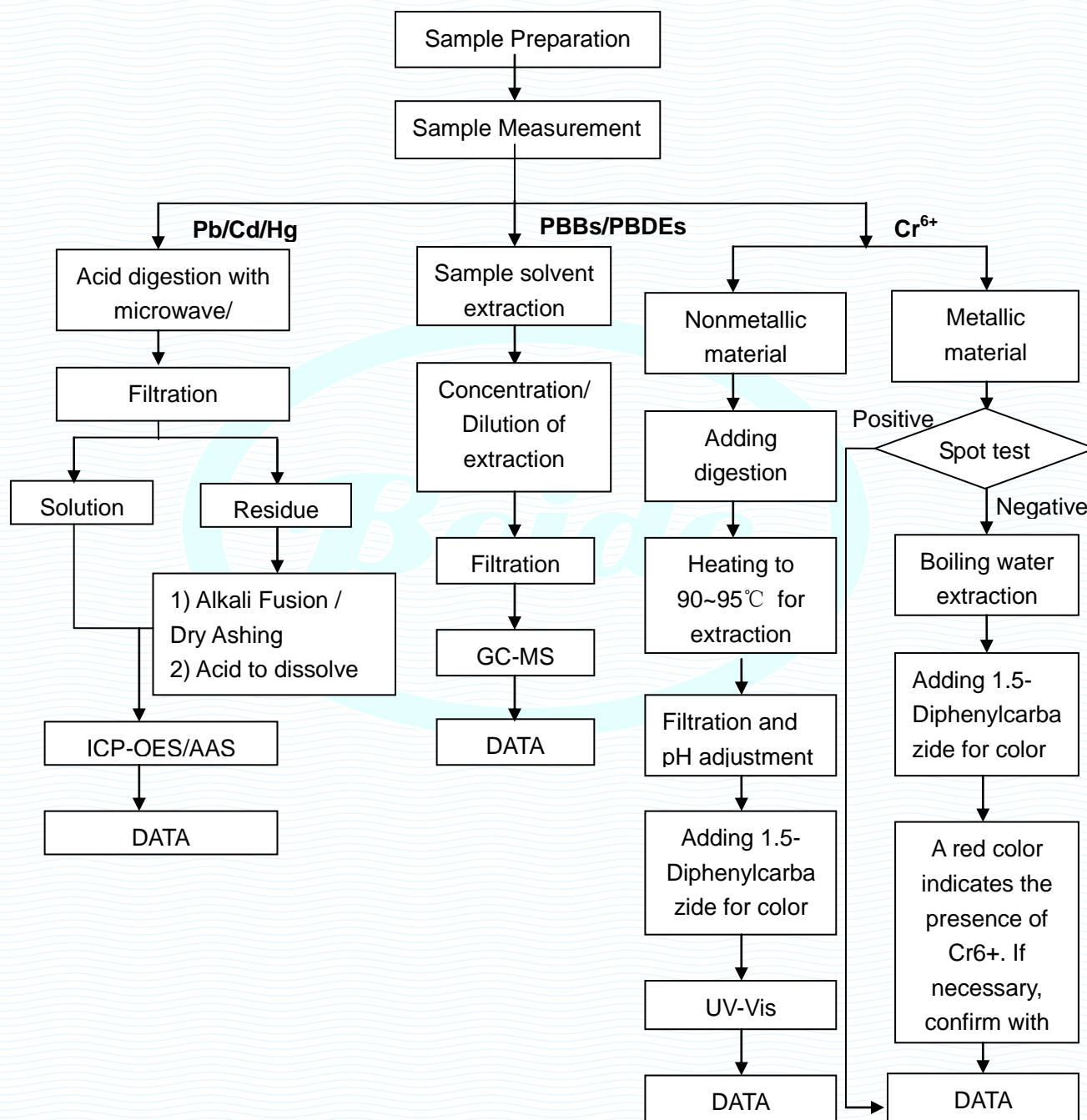
# RoHS TEST REPORT

Report No. : B-R191026307

Date: Nov. 20, 2019

Page 11 of 21

## RoHS Testing Flow Chart



This report is considered invalidated without the Special Seal for Inspection of the Beide (Shenzhen) Product Service Limited, This report shall not be altered, increased or deleted. The results shown in this test report refer only to the sample(s) tested. Without written approval of Beide (Shenzhen) Product Service Limited, this test report shall not be copied except in full and published as advertisement.

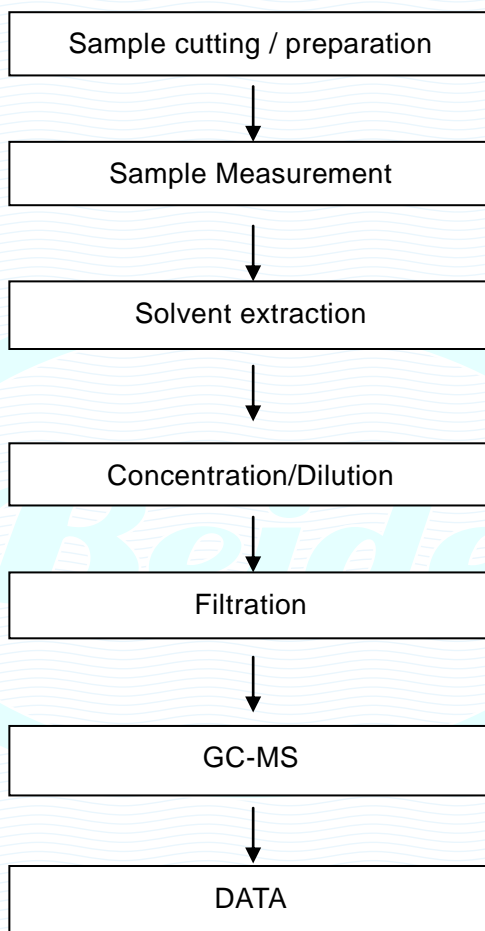
# RoHS TEST REPORT

Report No. : B-R191026307

Date: Nov. 20, 2019

Page 12 of 21

## Phthalates Testing Flow Chart



This report is considered invalidated without the Special Seal for Inspection of the Beide (Shenzhen) Product Service Limited, This report shall not be altered, increased or deleted. The results shown in this test report refer only to the sample(s) tested. Without written approval of Beide (Shenzhen) Product Service Limited, this test report shall not be copied except in full and published as advertisement.

# RoHS TEST REPORT

Report No. : B-R191026307

Date: Nov. 20, 2019

Page 13 of 21

## Photographs of Sample



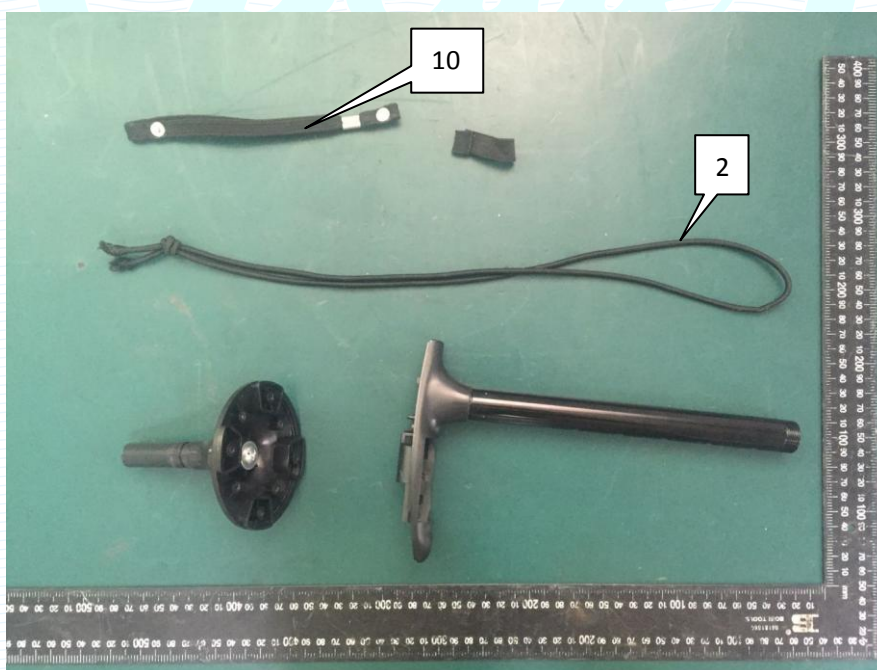
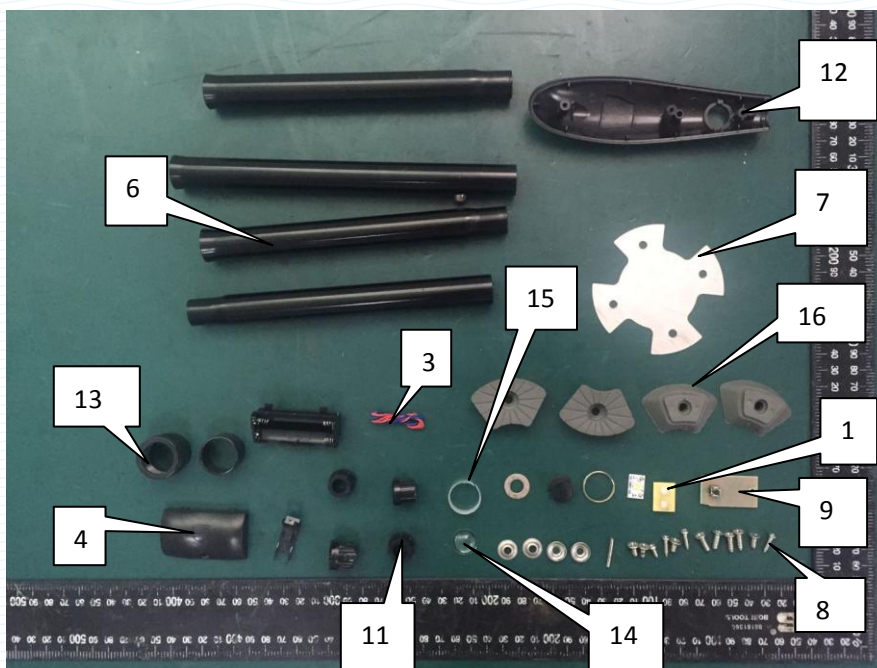
This report is considered invalidated without the Special Seal for Inspection of the Beide (Shenzhen) Product Service Limited, This report shall not be altered, increased or deleted. The results shown in this test report refer only to the sample(s) tested. Without written approval of Beide (Shenzhen) Product Service Limited, this test report shall not be copied except in full and published as advertisement.

# RoHS TEST REPORT

Report No. : B-R191026307

Date: Nov. 20, 2019

Page 14 of 21



This report is considered invalidated without the Special Seal for Inspection of the Beide (Shenzhen) Product Service Limited, This report shall not be altered, increased or deleted. The results shown in this test report refer only to the sample(s) tested. Without written approval of Beide (Shenzhen) Product Service Limited, this test report shall not be copied except in full and published as advertisement.

# RoHS TEST REPORT

Report No. : B-R191026307

Date: Nov. 20, 2019

Page 15 of 21



GB-802

This report is considered invalidated without the Special Seal for Inspection of the Beide (Shenzhen) Product Service Limited, This report shall not be altered, increased or deleted. The results shown in this test report refer only to the sample(s) tested. Without written approval of Beide (Shenzhen) Product Service Limited, this test report shall not be copied except in full and published as advertisement.

# RoHS TEST REPORT

Report No. : B-R191026307

Date: Nov. 20, 2019

Page 16 of 21



GB-803



GB-804

This report is considered invalidated without the Special Seal for Inspection of the Beide (Shenzhen) Product Service Limited, This report shall not be altered, increased or deleted. The results shown in this test report refer only to the sample(s) tested. Without written approval of Beide (Shenzhen) Product Service Limited, this test report shall not be copied except in full and published as advertisement.

# RoHS TEST REPORT

Report No. : B-R191026307

Date: Nov. 20, 2019

Page 17 of 21



GB-805



GB-806

This report is considered invalidated without the Special Seal for Inspection of the Beide (Shenzhen) Product Service Limited, This report shall not be altered, increased or deleted. The results shown in this test report refer only to the sample(s) tested. Without written approval of Beide (Shenzhen) Product Service Limited, this test report shall not be copied except in full and published as advertisement.

# RoHS TEST REPORT

Report No. : B-R191026307

Date: Nov. 20, 2019

Page 18 of 21



GB-812



GB-819

This report is considered invalidated without the Special Seal for Inspection of the Beide (Shenzhen) Product Service Limited, This report shall not be altered, increased or deleted. The results shown in this test report refer only to the sample(s) tested. Without written approval of Beide (Shenzhen) Product Service Limited, this test report shall not be copied except in full and published as advertisement.

# RoHS TEST REPORT

Report No. : B-R191026307

Date: Nov. 20, 2019

Page 19 of 21



GB-823



GB-830

This report is considered invalidated without the Special Seal for Inspection of the Beide (Shenzhen) Product Service Limited, This report shall not be altered, increased or deleted. The results shown in this test report refer only to the sample(s) tested. Without written approval of Beide (Shenzhen) Product Service Limited, this test report shall not be copied except in full and published as advertisement.

# RoHS TEST REPORT

Report No. : B-R191026307

Date: Nov. 20, 2019

Page 20 of 21



GB-831



GB-832

This report is considered invalidated without the Special Seal for Inspection of the Beide (Shenzhen) Product Service Limited, This report shall not be altered, increased or deleted. The results shown in this test report refer only to the sample(s) tested. Without written approval of Beide (Shenzhen) Product Service Limited, this test report shall not be copied except in full and published as advertisement.

# RoHS TEST REPORT

Report No. : B-R191026307

Date: Nov. 20, 2019

Page 21 of 21



GB-8020



GB-8060

\*\*\*End of Report\*\*\*

This report is considered invalidated without the Special Seal for Inspection of the Beide (Shenzhen) Product Service Limited, This report shall not be altered, increased or deleted. The results shown in this test report refer only to the sample(s) tested. Without written approval of Beide (Shenzhen) Product Service Limited, this test report shall not be copied except in full and published as advertisement.