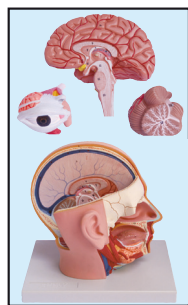
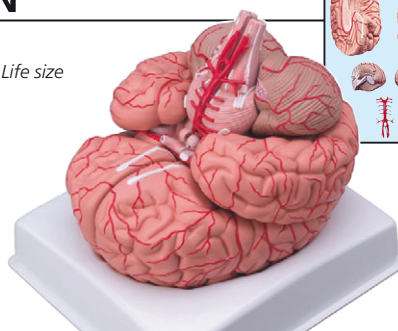


## HEAD AND BRAIN



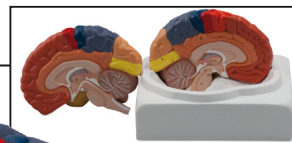
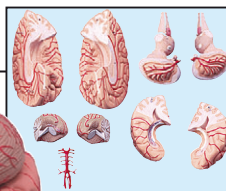
• **40010 HEAD DISSECTION - life size**  
Size: 18x25x23 cm - 140 g - 4 parts - 1X

Life size

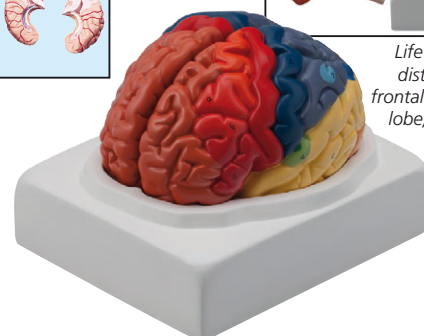


Can be divided into 9 parts showing the temporal and occipital lobes, the frontal and parietal lobes, the cerebellum, the brain stem and basilar artery

• **40020 BRAIN WITH ARTERIES**  
Size: 16x18x16 cm - 1 kg - 9 parts - 1X

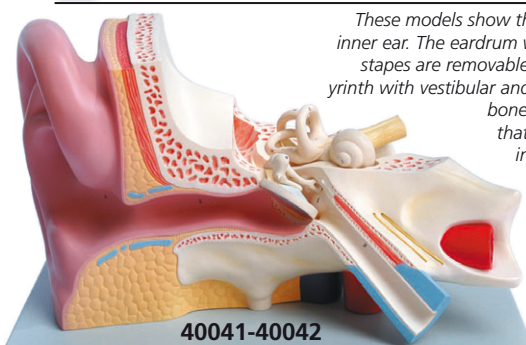


Life size brain with distinct colour for: frontal lobe, parietal lobe, occipital lobe, temporal lobe, motor cortex, somatosensory cortex, limbic cortex, cerebellum, brain stem



• **40021 REGIONAL BRAIN**  
Size: 20x17x15 cm - 1.3 kg - 2 parts

## SENSE ORGANS: EYE AND EAR



These models show the external, middle and inner ear. The eardrum with malleus, incus and stapes are removable. Also cochlea and labyrinth with vestibular and cochlear nerves and 2 bones sections (40042 only) that define the middle and inner ear are removable.

40041-40042

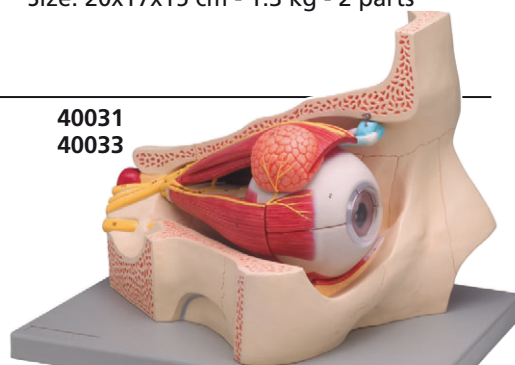
GIMA code	EAR SIZES	Kg	Parts	Mag
40041	33x23x21 cm	1	3	3X
40042	33x23x21 cm	2	5	3X

Cornea, iris, lens and vitreous body can be removed.

40030  
Disassembled



40030  
Assembled

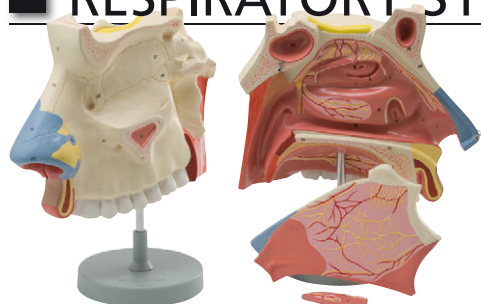


40031  
40033

Models show the eye ball with optic nerves and muscles in its natural position in the bony orbit

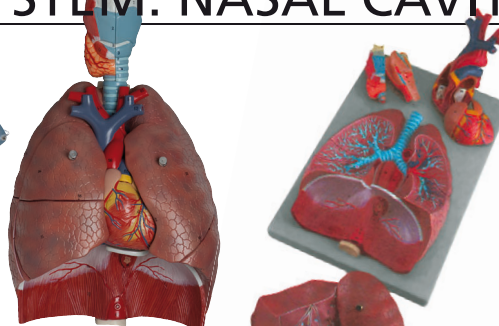
GIMA code	EYE WITH ORBIT SIZES	Kg	Parts	Mag
40030	15x17x27 cm	0.9	6	6X
40031	42x30x31 cm	3.2	4	5X
40033	42x30x31 cm	3.4	11	5X

## RESPIRATORY SYSTEM: NASAL CAVITY, LARYNX



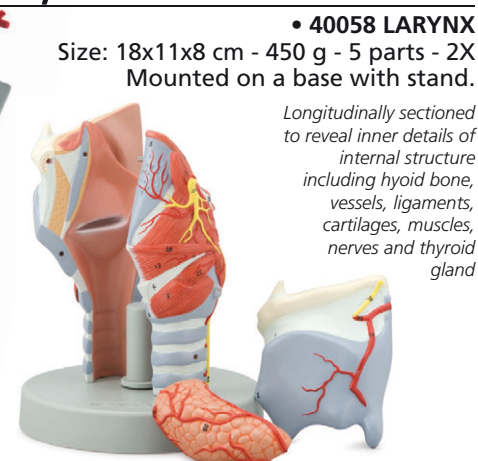
3x life size. The model shows a medial section of the nasal cavity. The nasal septum and part of the olfactory epithelium are removable to show deep internal structures.

• **40056 NASAL CAVITY**  
Size: 15x20x30 cm - 1 kg - 3 parts - 3X  
Mounted on base with stand.



A life size reproduction of the complete human respiratory system. It is composed of 7 parts showing the larynx (dissected along the sagittal plane), the lungs (dissected along the frontal plane) and a 2-part heart.

• **40050 RESPIRATORY SYSTEM**  
Size: 26x40x12 cm - 1.3 kg - 7 parts life size

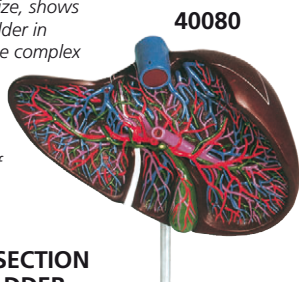


• **40058 LARYNX**  
Size: 18x11x8 cm - 450 g - 5 parts - 2X  
Mounted on a base with stand.

Longitudinally sectioned to reveal inner details of internal structure including hyoid bone, vessels, ligaments, cartilages, muscles, nerves and thyroid gland

## DIGESTIVE SYSTEMS: LIVER, PANCREAS, STOMACH

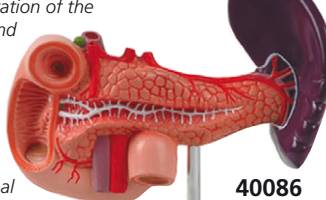
This model, 1.5x life size, shows the liver and gallbladder in open section with the complex network of vessels and bile ducts, displayed in different colours to clarity and ease of examination.



40080

• **40080 LIVER SECTION WITH GALLBLADDER**  
Size: 28x27x14 cm - 880 g - 1 part - 1.5X  
Mounted on a base with stand.

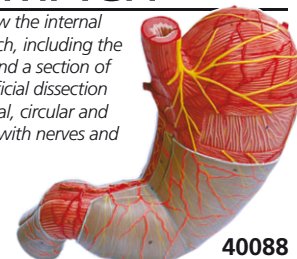
Accurate representation of the pancreas, spleen and duodenum. The pancreas is open to show the entire pancreatic duct. The duodenum is partially dissected to expose its internal structure.



40086

• **40086 PANCREAS, DUODENUM AND SPLEEN**  
Size: 16x15x23 cm - 350 g - 1 part - 1X  
Mounted on a base with stand.

Can be opened to show the internal structure of the stomach, including the mucosa, the pylorus, and a section of the gastric wall. Superficial dissection exposes the longitudinal, circular and oblique muscle layers, with nerves and vascular structures

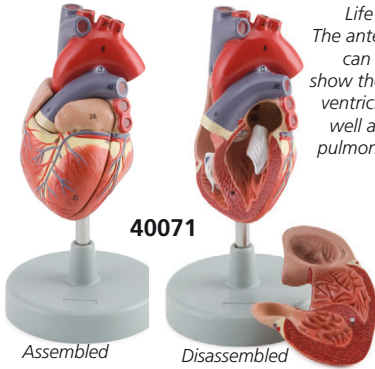


40088

• **40088 STOMACH**  
Size: 16x14.5x5 cm - 235 g - 2 parts - 1.5X  
Mounted on a base with stand.



## HEART AND CIRCULATORY SYSTEM



40071

Assembled

Disassembled

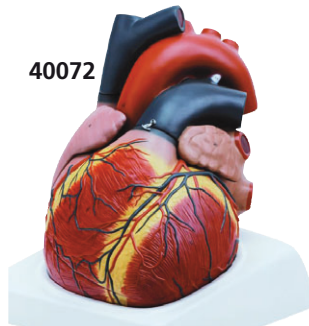
Enlarged 2000 times, this model shows the various types of blood cells, including red blood cells, white blood cells (lymphocytes, monocytes, neutrophils, eosinophils and basophils) and blood platelets.



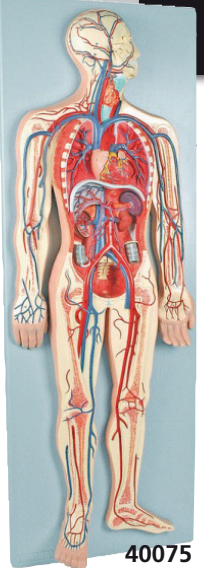
40077

Life size in 2 parts. The anterior heart wall can be removed to show the left and right ventricles and atria as well as the tricuspid, pulmonary, mitral and aortic valves.

40072



A general view of the human circulation. It includes the heart (2 parts), lungs, liver, spleen, kidneys and relevant connections with the pulmonary and systemic circulatory pathways.



40075

GIMA code	HEART AND CIRCULATORY SYSTEM	Size cm	Weight kg	Parts	Magnif.
40071	HEART - mounted on base	11x7x10	0.23	2	1X
40072	GIANT HEART - mounted on base	24x25x28	3.5	4	3X
40077	BLOOD CELLS - mounted on board	58x38x7	1.0	1	2000X
40075	VASCULAR SYSTEM - mounted on board	90x32x11	2.3	2	0.5X

## URINARY SYSTEM: MALE BLADDER, KIDNEY

### • 40090 MALE URINARY BLADDER WITH PROSTATE

Size: 27x20x15 cm - 1,2 kg - 2 parts - 3X

This model, enlarged 3 times, shows the male urinary bladder with the prostate gland surrounding the urethra. The model is dissected medially to expose both internal and external structures of the bladder and prostate, including the ureteric and urethral orifices, ductus deferens, seminal gland, ejaculatory duct.

40090

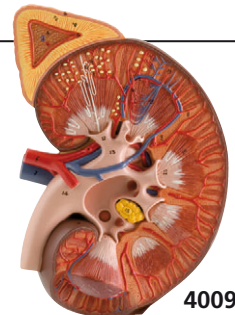


### • 40094 KIDNEY WITH ADRENAL GLAND+RENAL CORPUSCLE

Size: 40x15x8 cm - 1,2 kg - 1 part - 3X

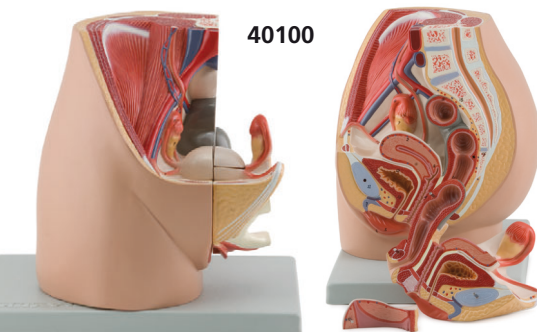
This model shows a frontal section of the human kidney enlarged 3 times. The kidney is shown with the renal capsule. Additional structures include: the cortex, medulla, pyramids with papillae, partially dissected renal pelvis, renal calices, ureter, blood vessels, suprarenal gland with cortex and medulla. A schematic representation of the renal corpuscle with the system of collecting tubules is included.

40094



## PELVIS - FEMALE AND MALE

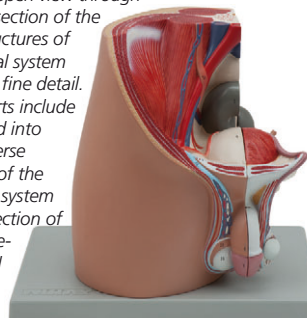
40100



This life size model, composed of 3 parts, shows an open dissection through the median sagittal section of the pelvis. Internal structures of the female urogenital system are portrayed in great detail. Removable parts include half of the female reproductive system with the uterus opened to reveal medial and transverse sectional views.

40105

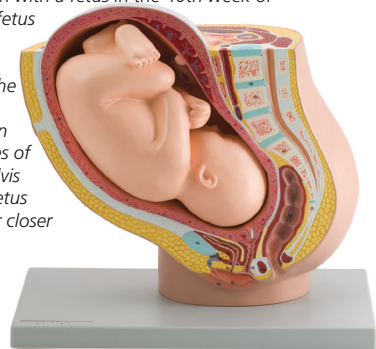
This life size model, composed of 4 parts, presents an open view through a median sagittal section of the pelvis. Internal structures of the male urogenital system are represented in fine detail. The removable parts include a half penis divided into medial and transverse sections, and half of the male reproductive system with an open dissection of a testis showing details of the internal structure.



GIMA code	PELVIS size cm	Sex	Kg	Parts	Mag
40100	30x20x27	fem	1.7	3	1X
40105	30x20x27	male	1.7	4	1X

## PREGNANCY PELVIS

This life size model depicts the female human pelvis in median section with a fetus in the 40th week of pregnancy. The fetus is in the normal position prior to birth, showing the anatomical relationship between various structures of the maternal pelvis and the fetus. Fetus is detachable for closer examination.



### • 40110 PREGNANCY PELVIS WITH MATURE FETUS

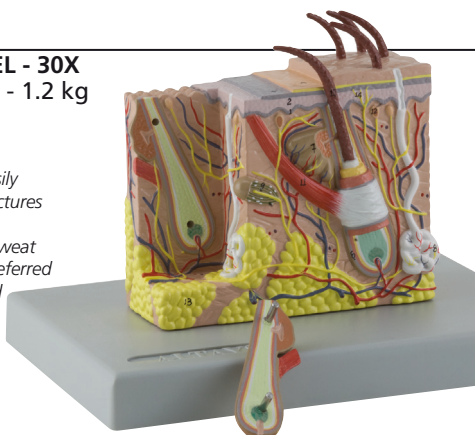
Size: 40x26x34 cm - 3.3 kg - 2 part - 1X

## SKIN

### • 40061 SKIN MODEL - 30X Size: 20x15x15.5 cm - 1.2 kg Mounted on base

All the skin layers can be easily identified and the main structures such as hair follicle, sensitive corpuscles, sebaceous and sweat glands, are numbered and referred on the accompanying k-card

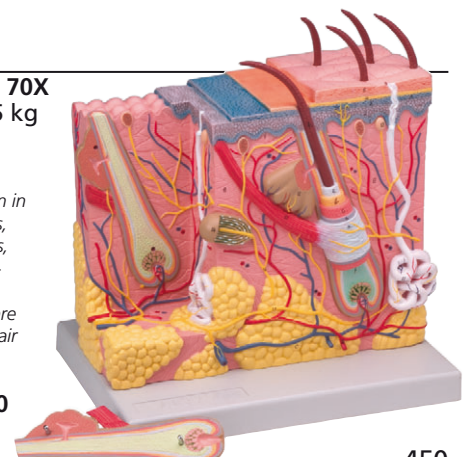
40061



### • 40060 SKIN MODEL - 70X Size: 25x18x28 cm - 1.5 kg 2 parts - 70X Mounted on base

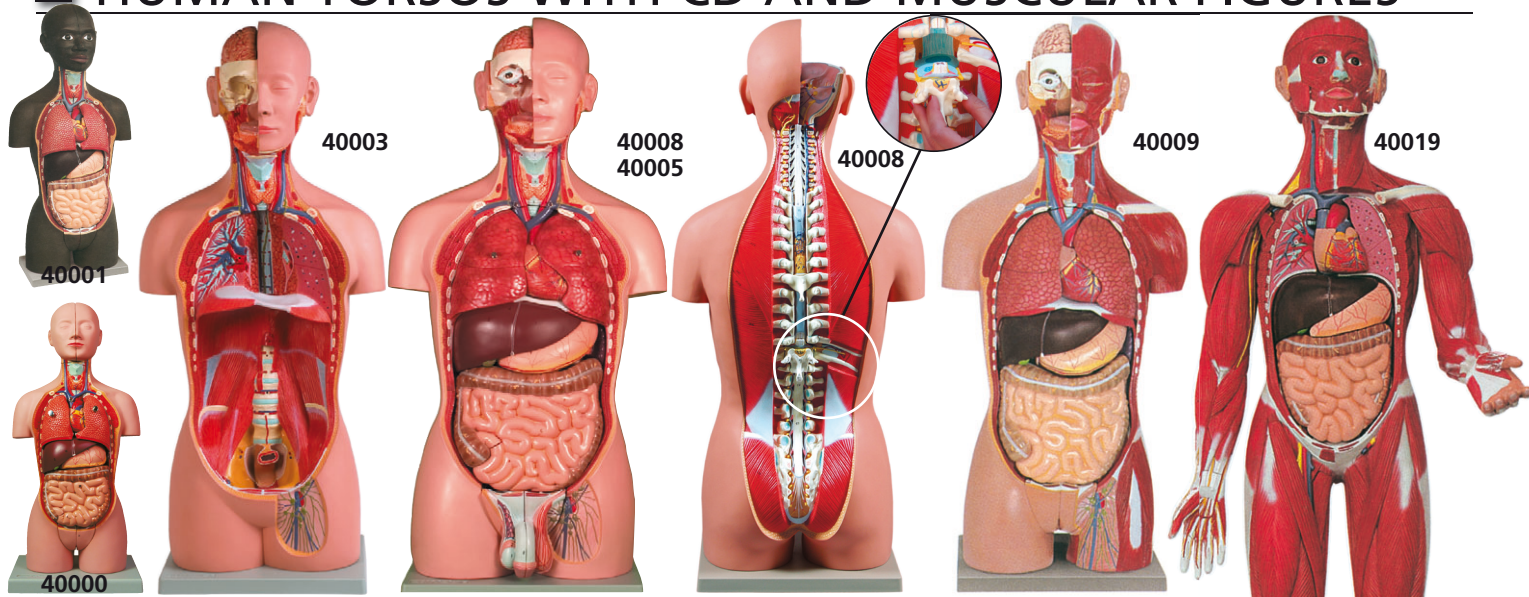
Anatomical structures are shown in details including the hair follicles, sebaceous glands, sweat glands, erector muscles, Pacinian corpuscles, nerves and blood vessels. The different layers of the skin are clearly defined. A portion of a hair shaft can be removed to show internal details.

40060





# HUMAN TORSOS WITH CD AND MUSCULAR FIGURES

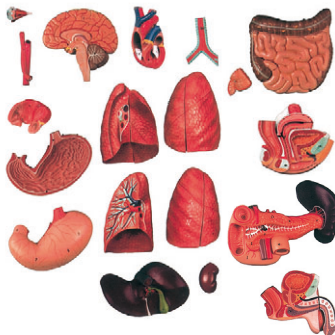


GIMA code	HUMAN TORSOS *SUPPLIED WITH CD ROM GUIDE	Size	Weight	Parts
40000	MINI TORSO	20x15xh45 cm	2.1 kg	16
40001	MINI TORSO - african	20x15xh45 cm	2.1 kg	16
40003	TORSO UNI SEX *	23x33xh90 cm	9 kg	16
40005	TORSO DUAL SEX*	23x33xh90 cm	9.3 kg	25
40008	TORSO DUAL SEX OPENBACK*	23x33xh90 cm	9.3 kg	27
40009	MUSCULAR TORSO DUAL SEX OPENBACK*	23x33xh90 cm	10 kg	28
40019	MUSCULAR FIGURE	30x33xh87 cm	5.3 kg	30



This CD-ROM Guide greatly extends the educational value of the anatomical torsos by identifying hundreds of structures that are not included on the printed key. High-resolution digital images of torso components show the finest anatomical details of all body systems from various angles.

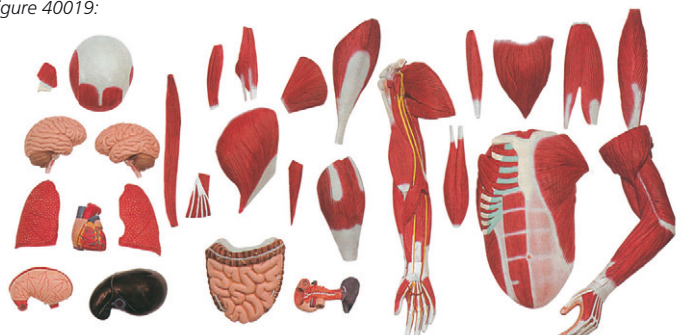
Some of the detachable parts of human torsos (40005-8-9):



Removable structures, of codes 40005-8-9, include the following:

- eye with optic nerve and extraocular muscles
- half of the brain - trachea - descending thoracic aorta and esophagus - right and left lungs (two parts each) - liver with gallbladder - half of one kidney - two part heart - stomach dissected in two parts (not for 40005) - pancreas, duodenum and spleen - small and large intestines - male and female urogenital systems (4 parts each), (on 40009 female system is in 3 parts and provided of detachable fetus) - thoracic vertebra (T12) with spinal cord (code 40008 and 40009 only).

Detachable parts of human muscular figure 40019:



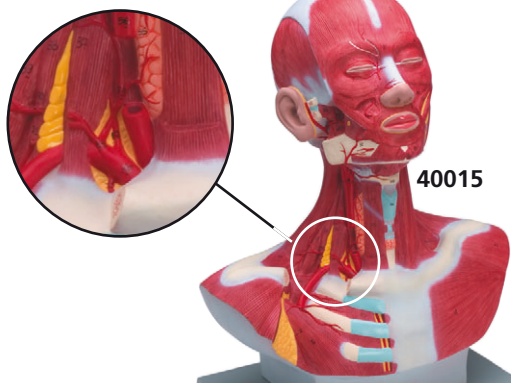
## HEAD MUSCULATURE

### • 40015 HEAD/NECK MUSCULATURE

Size: 37x23x46 cm

- 3.1 kg - 1 part - life size

Superficial and deep musculature are well represented as are the pathways of the subclavian and carotid arteries



40015

## MUSCLES: SHOULDER, ARM, LEG

### • 40016 SHOULDER MUSCLE

Size: 23x19x11 cm - 435 g

1 part - 1X

Mounted on a base with stand



40016

This model illustrates in great details the muscles, ligaments and bones of the shoulder.

Through different muscles section it is possible to observe the deep musculature to the bone.

### • 40017 ARM MUSCLE

Size: 74x20x12 cm - 1.9 kg

- 7 parts



40017

This 7-part life size model shows, in great detail, the anatomical structure of the arm, complete with superficial and deeper muscles, vascular structures, nerves and ligaments. The hand and the shoulder are also well represented.

The following parts are removable:

- deltoid muscle
- biceps muscle
- triceps muscle
- long palmar muscle with radial flexor muscle of wrist
- brachioradial muscle
- radial extensor muscle of wrist
- palmar aponeurosis

### • 40018 LEG MUSCLE

Size: 110x19x14.5 cm - 5.1 kg

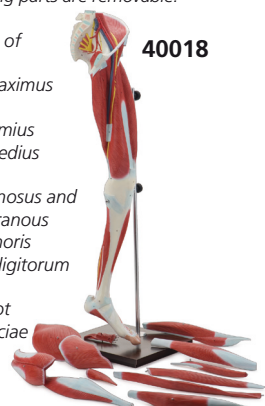
13 parts

Mounted on a base with stand

This 13-part model shows, in great detail, the anatomical structure of the leg, complete with superficial and deeper muscles, vascular structures, nerves and ligaments.

The following parts are removable:

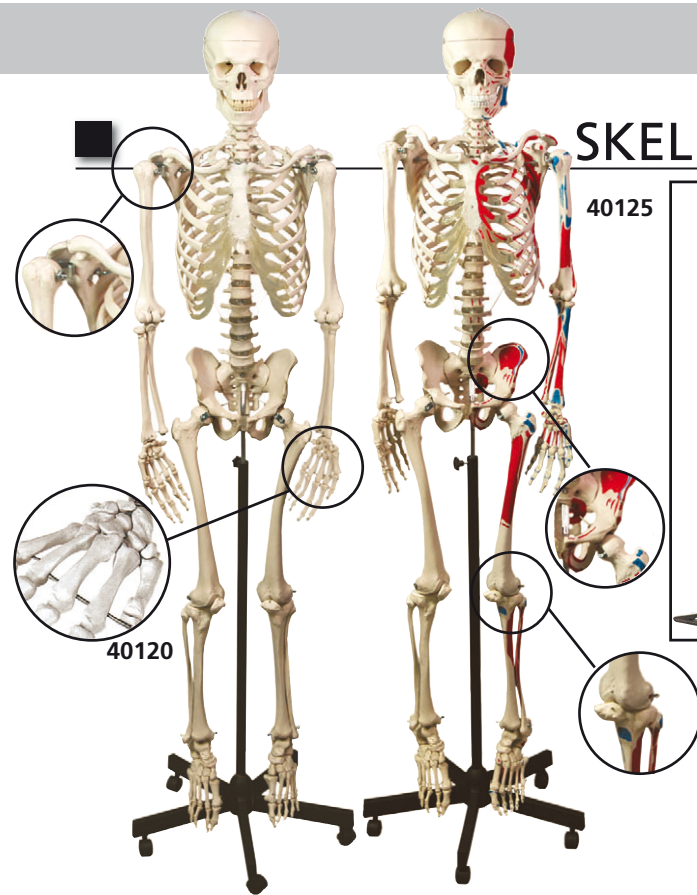
- sartorius
- long head of biceps
- gluteus maximus
- soleus
- gastrocnemius
- gluteus medius
- gracilis
- semitendinosus and semimembranosus
- rectus femoris
- extensor digitorum longus
- sole of foot
- tensor fasciae latae



40018



## SKELETONS



### • 40115 MINI SKELETON

Height: 80 cm Weight: 1.5 kg. This 1/2 life size model shows the anatomy of the human skeleton in high detail. The skull can be disassembled into 3 parts: skullcap, base of skull and mandible. All the main joints are articulated. Arms and legs can be removed easily. Mounted on a stand for hanging.

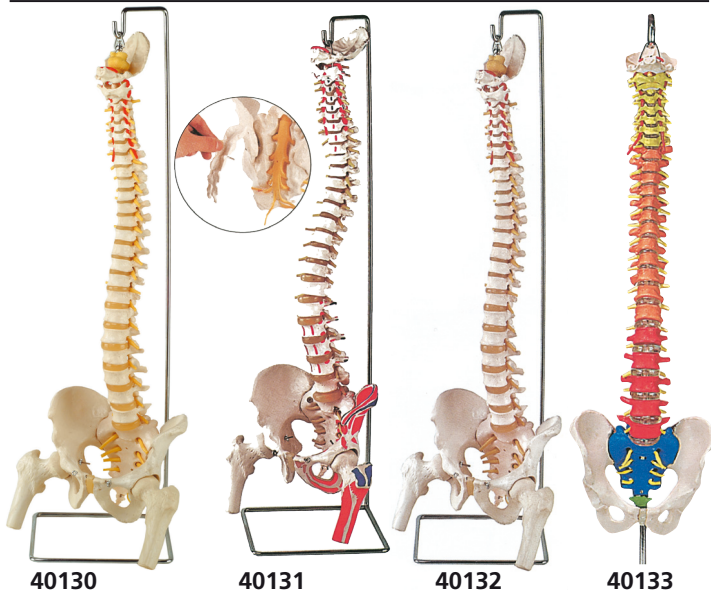
### • 40120 HUMAN SKELETON

Height: 170 cm. Weight: approx 10 kg. This model is a replica of a life size human skeleton and shows all the skeleton parts in high detail. It's hand-assembled to provide intricate details and long-lasting durability. The main joints are articulated; the upper and lower limbs can be removed easily. The following parts are detachable: Calvarium, Skull, Jaw, Arms, Legs. Supplied with 5-caster roller stand.

### • 40125 MUSCULAR HUMAN SKELETON

Same as code 40120 but with the left side of the skeleton showing the point of origin (red) and the point of insertion (blue) of the muscles.

## VERTEBRAL COLUMNS



### FLEXIBLE VERTEBRAL COLUMNS

Fully flexible life size vertebral columns consisting of the occipital plate, cervical, thoracic and lumbar vertebrae, sacrum, coccyx, complete pelvis with symphysis, removable femur heads (only 40130,31,32).

All models also feature representation of the vertebral arteries, spinal nerve branches, and a prolapsed L3-L4 intervertebral disc.

On 40131 the left side of the skeleton shows the points of origin (red) and the point of insertion (blue) of the muscles. On 40131 and 40132 the sacral crest and coccyx are removable to show the sacral section of the spinal cord and associated nerve branches.

On 40133 the various regions of the spinal column are colour coded for easy identification.

GIMA code	FLEXIBLE VERTEBRAL COLUMNS	Size cm	Weight	Magnif.
40130	VERTEBRAL COLUMN with femur heads	95x20x20	3 kg	1X
40131	VERTEBRAL COL with femur + muscle	95x20x20	3 kg	1X
40132	VERTEBRAL COL with femur + open sacrum	95x20x20	3 kg	1X
40133	SPINAL COL with colour coded regions	98x23x23	970 g	1X

## KNEE AND SHOULDER

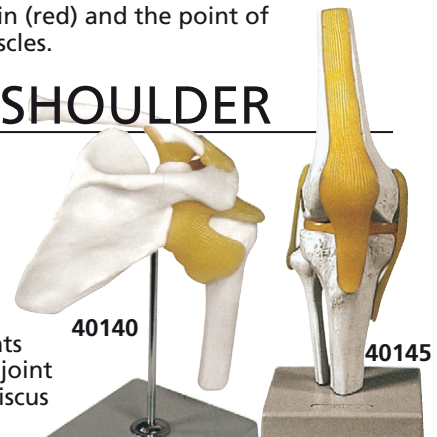
### • 40140 SHOULDER JOINT

Size: 29x12x12cm - 560g - 1 part - 1X  
Mounted on stand.

### • 40145 KNEE JOINT

Size: 12x12x31cm - 440g - 1 part - 1X

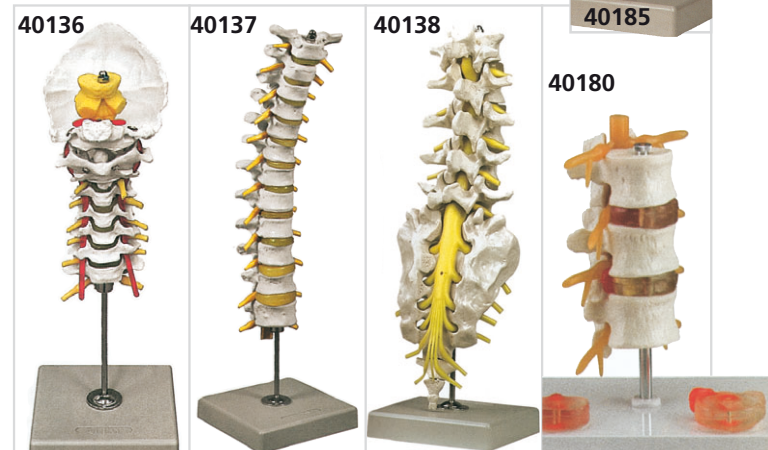
The life size model represents a functional model of knee joint with lateral ligaments, meniscus and patellar ligament.



## SKELETAL SYSTEM

### Advanced osteoporosis model.

Shows 3 vertebrae: one healthy vertebra, one vertebra with pathological changes at first stage, one vertebra with pathological changes at advanced stage.



**Cervical spinal column** consists of 7 cervical vertebrae with intervertebral discs, occipital plate, cervical nerves, vertebral arteries, spinal cord and brain stem.

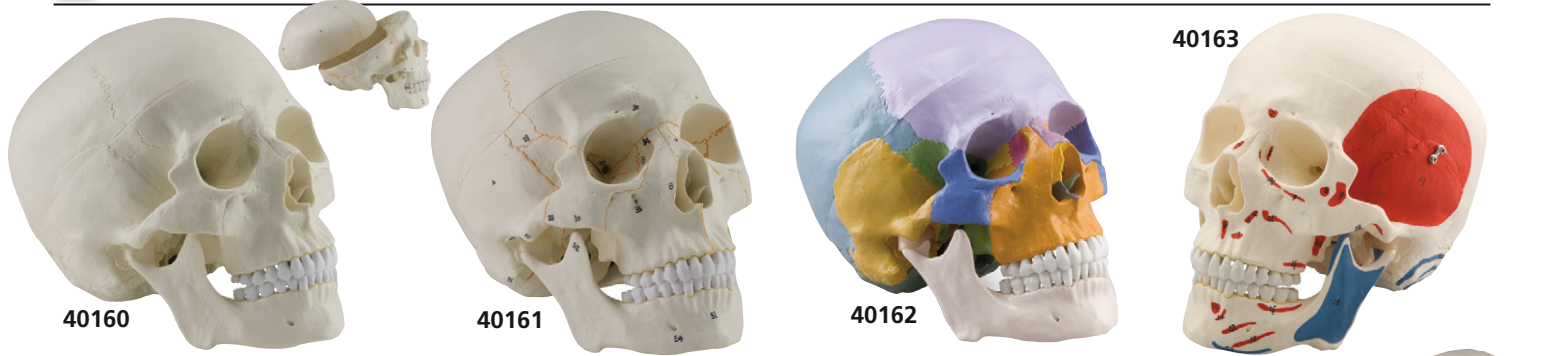
**Thoracic spinal column** consists of 12 thoracic vertebrae with intervertebral discs, thoracic nerves and spinal cord.

**Lumbar spinal column with sacral and coccyx bones.** It consists of 5 lumbar vertebrae with intervertebral discs, lumbar nerves and spinal cord. The sacral crest and coccyx are removable.

**3 lumbar vertebrae with hernia and prolapsed intervertebral disc.** Shows 3 lumbar vertebrae with spinal nerves, dura mater and 2 intervertebral discs affected by lateral and medial hernia.

GIMA code	SKELETAL SYSTEM	Size cm	Weight	Magnif.
40136	CERVICAL SPINAL COLUMN	12x12x22	350 g	1X
40137	THORACIC SPINAL COLUMN	12x12x40	600 g	1X
40138	LUMBAR SPINAL COLUMN	12x12x36	800 g	1X
40180	HERNIA PATHOLOGY	16.5x12x26	300 g	1X
40185	ADVANCED OSTEOPOROSIS	12x12x15	200 g	1X

## HUMAN SKULLS - 3 PARTS



### Numbered skull (40161)

Significant structures are numerated

### Coloured skull (40162)

All the bones are depicted in different colours, making this model a useful tool to study the correct position and relationship of all the structures.

### Muscular skull (40163)

The left side of the skull shows the points of origin (red) and the point of insertion (blue) of the muscles.

### MINI SKULL (40165) ½ adult natural size

It depicts all structural details of the skull.

It can be disassembled into skullcap and base of skull.

Articulated mandible.

Life size human skull reproduction with all details, made of PVC. Removable skull cap and articulated mandible.

40165

GIMA code	HUMAN SKULLS	Size cm	Weight g	Magnif.
40160	HUMAN SKULL	22x14x16	950	1X
40161	HUMAN SKULL - numerated	22x14x16	950	1X
40162	HUMAN SKULL - coloured	19.5x17x21.5	950	1X
40163	HUMAN SKULL - muscular	18x17x21	875	1X
40165	MINI SKULL	11x11x16.5	150	0.5X

## DENTAL MODELS

### • 40206 DECIDUOUS TEETH

Size: 9x9x10 cm - weight: 85 g. Mounted on base with stand.

This life size model shows the upper and lower jaw of a 5 year old child. The lower jaw is movable to reproduce the natural chew. The model exposes the arrangement of the young teeth.

### • 40205 PERMANENT TEETH

Size: 11x11x12 cm - weight: 170 g. Mounted on base with stand.

This life size model shows the upper and lower jaw of an adult. The lower jaw is movable to reproduce the natural chew. The model exposes the complete set of permanent teeth with roots and nerves fibres.



### • 40210 LOWER JAW

Size: 35x18x31 cm - weight: 1130 g  
Mounted on base with stand.

This 3X life size model is divisible into 6 parts to show all the characteristics of an adult half mandible. A portion of the jaw can be removed to show the roots of the teeth and the internal structure of the bone. Canine and molar teeth can be removed and dissected longitudinally to observe the tooth roots, pulp and nerves.

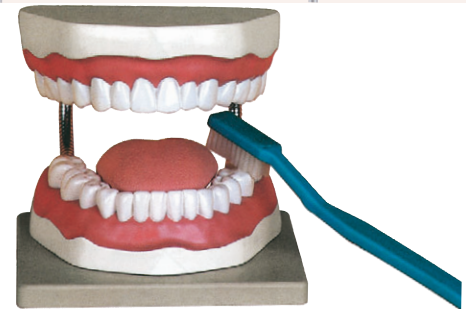


### • 40212 DENTAL PATHOLOGY MODEL

Size: 6x4.5x11 cm - weight: approx. 100 g

This 4X life size model shows the process of dental caries in its progressive stages.

The tissues forming the tooth (enamel, dentine and pulp) are shown, along with the way in which they are affected by the caries process.



### • 40200 ORAL HYGIENE

Size: 12x16x22 cm - weight: 1 kg  
Mounted on base.

A 3X life size model useful to teach the correct way to brush teeth. A giant toothbrush is included.



### • 40213 SET 3 TEETH: INCISOR, CANINE, MOLAR

Size: 33x33x11 cm - weight: 700 g

5-part model includes representations (10X life size) of human incisor, canine and molar teeth. The canine and molar can be divided into 2 parts each, showing internal features (dentine, enamel, cement and pulp).

### • 40214 LOWER MOLAR WITH CARIES

Size: 11x11x19.5 cm - weight: approx. 250 g  
Mounted on base with stand.

This 1-piece model is approximately 10X life size; it shows the most important dental pathologies, including dental caries, pulpitis, gingivitis and periapical periodontitis.



### • 40211 DENTAL CARIES

Size: 12x6x6 cm - weight: approx. 300 g

This model, composed of 7 parts, is 4X life size. It consists of 3 teeth, seated in their sockets, showing the progressive deterioration of tooth structure by dental caries. The first tooth shows the caries in the enamel. In the second tooth, the caries spreads through the dentine. In the third tooth, the pathology affects the pulp, jeopardizing the vitality of the tooth.



# VALUE HUMAN ANATOMY MODELS

## HUMAN SKULLS - 3 parts

A detailed reproduction of a life size human skull with all structural details. The mandible is articulated, the skullcap is removable to show internal details. All of the joints, sutures, fissures, foramina and processes are portrayed with utmost accuracy.



• 40155 HUMAN SKULL 1X - 3 parts - 21.5x12x16.5 cm



• 40156 HUMAN SKULL 1X NUMERATED - 3 parts



• 40157 HUMAN SKULL 1X COLOURED - 3 parts



• 40199 ORAL HYGIENE MODEL - 3X

Giant toothbrush is included

Fully flexible life size vertebral columns consisting of the occipital plate, cervical, thoracic and lumbar vertebrae, sacrum, coccyx, complete pelvis with symphysis, removable femur heads



• 40127 FLEXIBLE VERTEBRAL COLUMN with femur heads



• 40144 KNEE JOINT

A functional model of knee joint with lateral ligaments, meniscus and patellar ligament.



40119



40124

Life size human skeletons show all the skeleton parts in high detail. The main joints are articulated; the upper and lower limbs can be easily removed. The following parts are detachable: Calvarium, Skull, Jaw, Arms, Legs. Supplied with 5-caster roller stand.

Height: 180 cm  
Weight: approx 10 kg

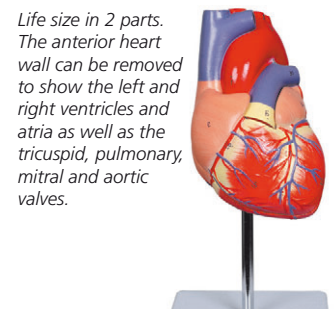


40124

• 40124 HUMAN MUSCULAR SKELETON



• 40139 SHOULDER JOINT



• 40069 HEART 1X - 2 parts

Life size in 2 parts. The anterior heart wall can be removed to show the left and right ventricles and atria as well as the tricuspid, pulmonary, mitral and aortic valves.



Assembled

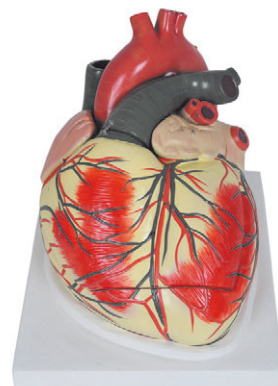
• 40028 EYE 6X - 6 parts



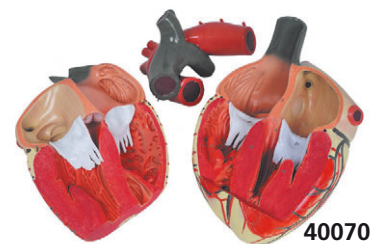
40028

Disassembled

Cornea, iris, lens and vitreous body can be removed.

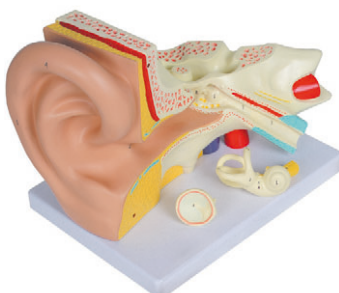


• 40070 HEART 3X - 3 parts



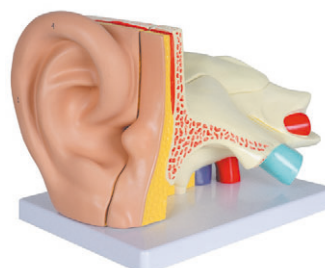
40070

Shows internal structures including the cardiac valves and the comparative morphology of the right and left ventricles.

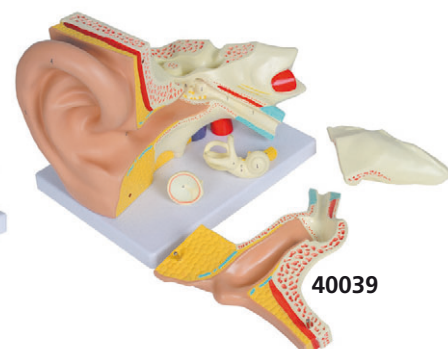


• 40038 EAR 3X - 3 parts

These models show the external, middle and inner ear. The eardrum with malleus, incus and stapes are removable. Also cochlea and labyrinth with vestibular and cochlear nerves and 2 bones sections (40039 only) that define the middle and inner ear are removable.  
Size: 32x20x21 cm  
Packaging size: 34.5x22x23.5 cm  
Packaging weight: 1.7 kg



• 40039 EAR 3X - 5 parts



40039